

7.3 SELECTOR VALVE

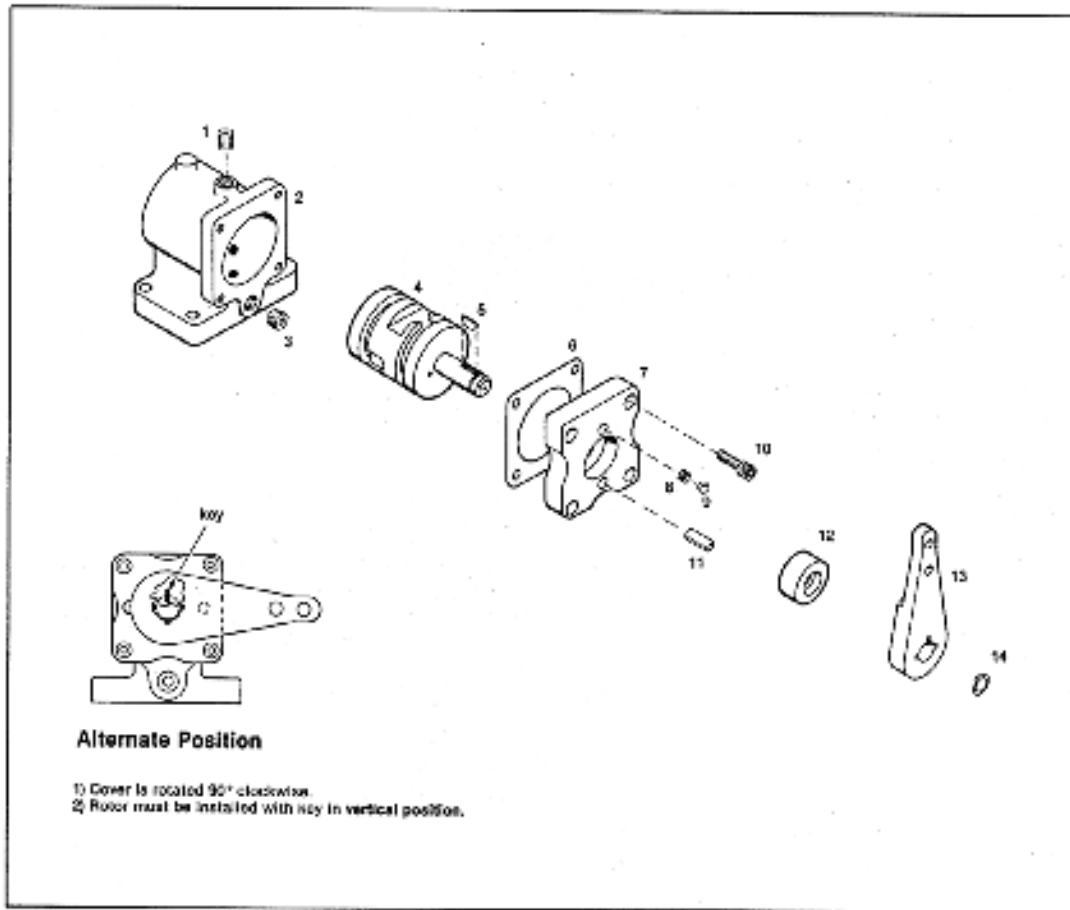


Figure 32. Selector Valve Assembly

ITEM	DESCRIPTION	PART NO.	QTY
REF	ASSEMBLY SELECTOR VALVE	1-01175-2000	1
1	PIPE PLUG, HEX SOCKET, 1/8" NPT	1-11279-0200	1
2	BLOCK VALVE	1-01141-1600	1
3	PIPE PLUG, HEX SOCKET, 1/4" NPT	1-11279-0300	1
4	VALVE ROTARY	1-01144-1500	1
5	KEY	1-01164-3200	1
6	GASKET, VALVE COVER	1-01156-1500	1
7	COVER, VALVE	1-12417-1000	1
8	SPRING, INDEXING	1-01132-1500	1
9	BALL, INDEXING, 1/4" DIA	1-11200-0000	1
10	CAPSCREW, SOCKET HEAD, 10-24X 1/2" LG	1-12844-0000	1
11	SPRING PIN 1/4 DIA.X 1/2" LG	1-12097-0800	1
12	OIL SEAL	1-01155-1500	1
13	LEVER	1-12419-1000	1
14	RING, RETAINING	1-01180-1500	1

7.4 OIL PUMP

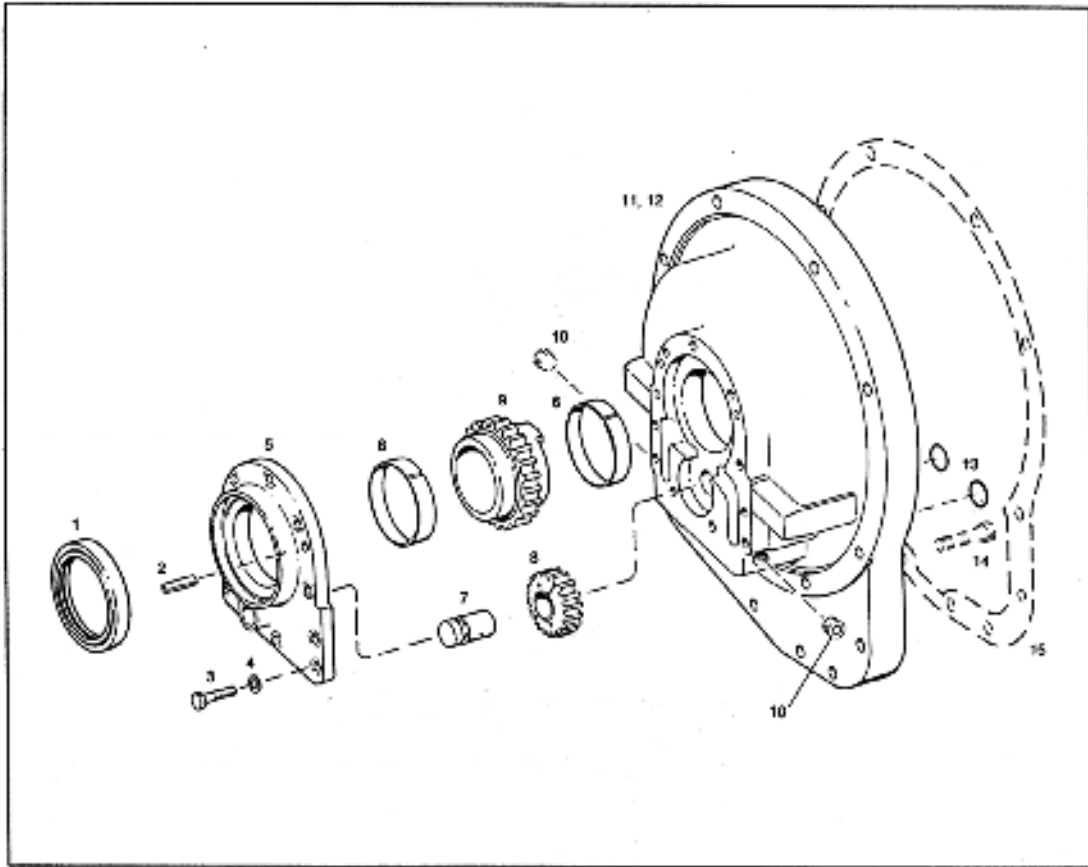


Figure 33. Oil Pump Assembly

ITEM	DESCRIPTION	PART NO.	QTY
REF	ASSEMBLY, RIGHT HAND OIL PUMP (DOES NOT INCLUDE ITEMS 14 AND 15)	1-01200-4300	1
REF	ASSEMBLY, LEFT HAND OIL PUMP (DOES NOT INCLUDE ITEMS 14 AND 15)	1-01200-3700	1
1	OIL SEAL	1-13713-0000	1
2	SPRING PIN, 1/4X 3/4" LG	1-12097-1200	2
3	CAPSCREW, HEX HEAD, 1/4X 1" LG	1-11366-0000	1
4	LOCKWASHER, 1/4" ID	1-05309-0800	11
5	COVER, OIL PUMP	1-01121-1400	1
6	BUSHING, DRIVER GEAR	1-01127-1400	2
7	PINION SHAFT, PUMP	1-01303-1400	1
8	PINION & BUSHING DRIVEN	1-01126-4000	1
9	GEAR DRIVER	1-01125-1400	1
10	PIPE PLUG	1-11279-0400	1
11	HOUSING, PUMP, RIGHT HAND	1-01120-1800	1
12	HOUSING, PUMP, LEFT HAND	1-01120-3000	1
13	O-RING	1-12919-0000	2
14	CAPSCREW, SOCKET HEAD	1-10956-0000	2
15	GASKET, HOUSING TO PUMP	1-01308-1400	1

7.5 CLUTCHES

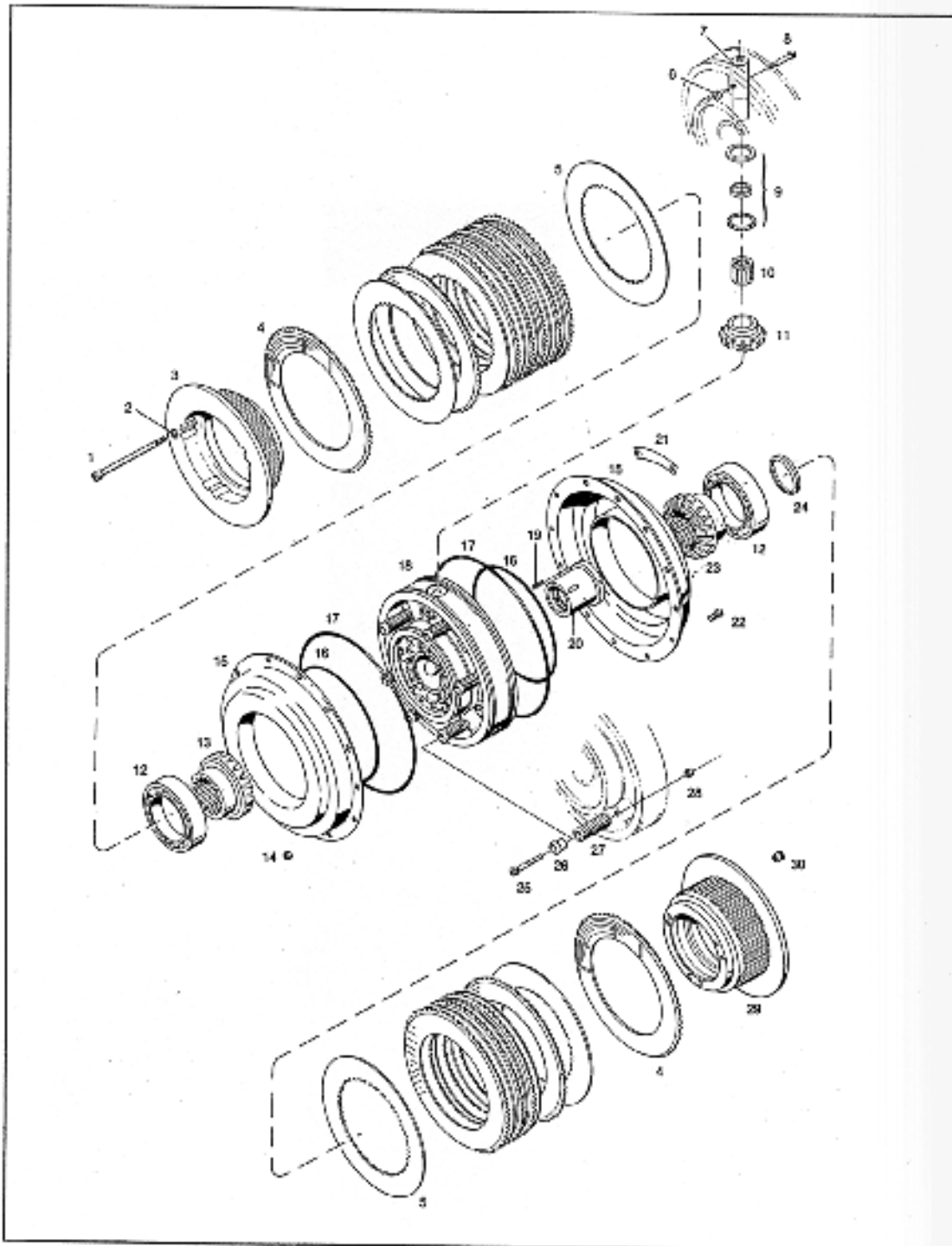


Figure 34. Clutch No. 1-00100-1300

5HD-200 STANDARD CLUTCH
CLUTCH NO. 1-00100-1300

ITEM	DESCRIPTION	PART NO.	QTY
REF.	CLUTCH ASSEMBLY	1-00100-1300	1
1	CAPSCREW, SOCKET HEAD	1-12732-0000	6
2	LOCKWASHER, HIGH COLLAR; 5/16" I.D	1-01104-1600	6
3	CLUTCH FLANGE, FORWARD	1-00212-1700	1
4	DISC, CLUTCH DRIVING	1-00230-4300	12
5	DISC, CLUTCH DRIVEN	1-00233-0700	12
6	NUT, SELF LOCKING	1-11105-0000	3
7	SHAFT, PINION	1-00214-1800	1
8	CAPSCREW, SOCKET HEAD	1-11104-0000	3
9	SUB-ASSEMBLY, BEARING	1-12434-0000	3
10	BEARING, NEEDLE	1-12367-0000	3
11	PINION, BEVEL	1-00217-1000	3
12	BEARING	1-12364-0000	2
13	GEAR, DRIVING	1-00215-1000	1
14	NUT, SELF LOCKING; ¼-28 NF	1-0026-3600	12
15	CYLINDER	1-00234-8400	2
16	QUAD RING	1-00238-1500	2
17	QUAD RING	1-00237-1500	2
*18	CARRIER, BEVEL GEAR	1-00219-1800	1
*19	SPRING PIN, 1/8" DIA. X ¾" LG	1-12095-1200	2
*20	BUSHING, FORWARD COMMUTATOR	1-00247-1800	1
21	NAME PLATE	1-13430-0000	1
22	CAPSCREW, SOCKET HD; ¼-28X 5/8" LG	1-13424-0000	12
23	GEAR, DRIVEN	1-00215-2000	1
24	RING	1-12303-0000	1
25	CAPSCREW, SOCKET HD; ¼-20-20x 1 ½" LG	1-07837-0800	12
26	RETAINER, RETURN SPRING	1-00243-3500	12
27	SPRING, RETURN	1-00239-1500	12
28	NUT, SELF-LOCKING; ¼-20	1-07846-0800	12
29	CLUTCH FLANGE, REVERSE	1-00212-6100	1
30	ALLENUT, STANDARD; 5/16-24	1-12733-0000	6

*NOTE: items 18,19 and 20 are available as part number 1-00219-4400 GEAR CASE ASSEMBLY

7.5 CLUTCHES

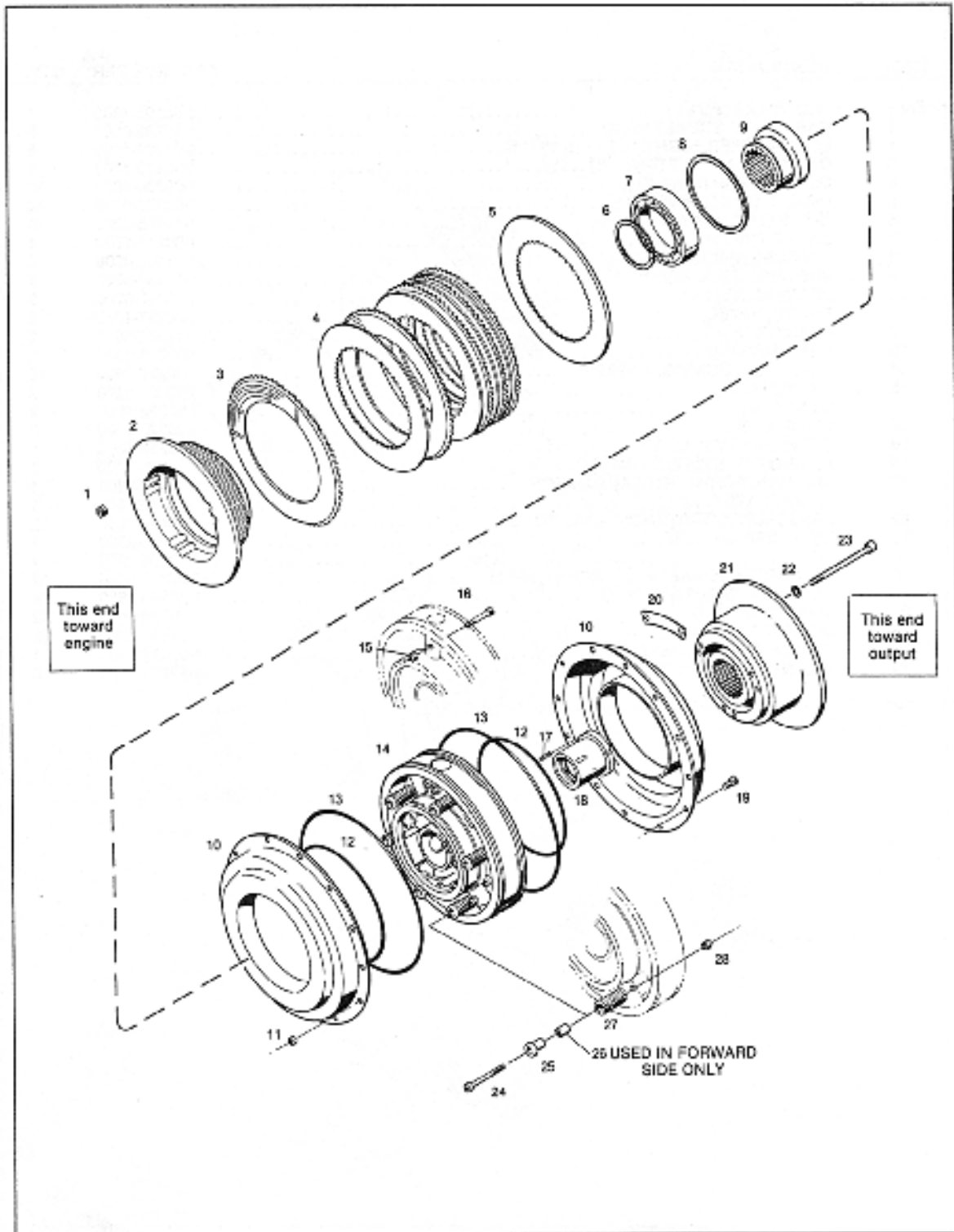
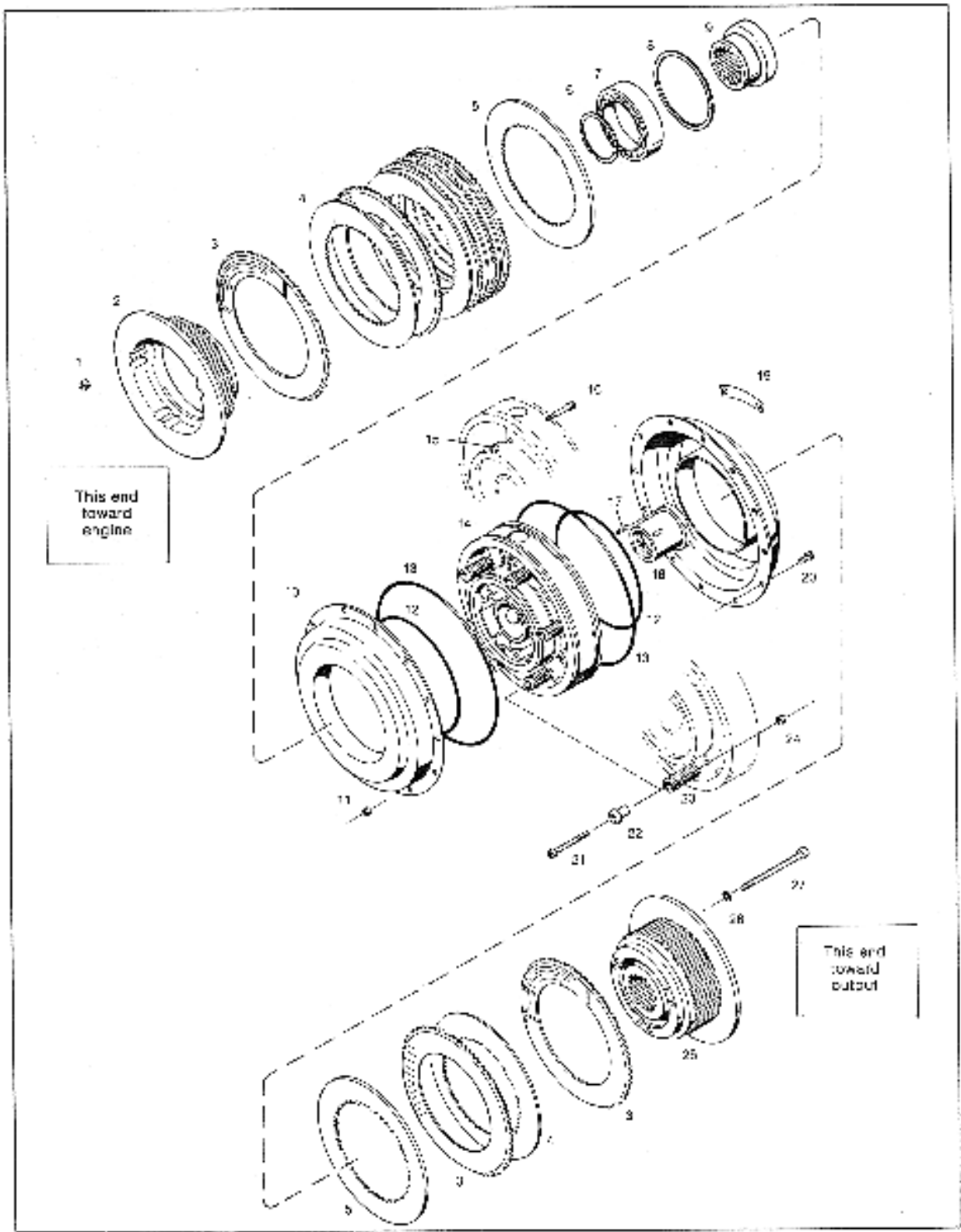


Figure 35. PTO Clutch Without Brake, No. 1-00100-1103

5HD 200 CLUTCH-PTO WITHOUT BRAKE
 CLUTCH NO. 1-00100-1103

ITEM	DESCRIPTION	PART NO.	QTY
REF.	CLUTCH ASSEMBLY, PTO WITHOUT BRAKE	1-00100-1103	1
1	ALLENUT, STANDARD; 5/16-24	1-12733-0000	6
2	FLANGE, FORWARD CLUTCH	1-13285-0000	1
3	DISC, CLUTCH DRIVING	1-00230-4300	5
4	DISC, CLUTCH DRIVEN	1-00233-0700	4
5	DISC, CLUTCH DRIVEN	1-00229-1700	1
6	SNAP RING, EXTERNAL	1-13282-0000	1
7	BEARING	1-13206-0000	1
8	SNAP RING, INTERNAL	1-13283-0000	1
9	SPACER	1-13280-0000	1
10	CYLINDER, CLUTCH	1-00234-8400	2
11	NUT, SELF LOCKING; ¼-28 N.F	1-00226-3600	12
12	QUAD RING	1-00238-1500	2
13	QUAD RING	1-00237-1500	2
14	CARRIER	1-00219-1800	1
15	NUT,SELF LOCKING	1-11105-0000	3
16	CAPSCREW; SOCKET HEAD; 10-32 NF x 1 ¾" LG	1-11104-0000	3
17	SPRING PIN; 1/8 DIA. X ¾ LG	1-12095-1200	2
18	BUSHING, FORWARD COMMUTATOR	1-00247-1800	1
19	CAPSCREW, SOCKET HD; ¼-28 NF X 5/8" LG	1-13424-0000	12
20	NAME PLATE	1-13430-0000	1
21	CLUTCH FLANGE, REVERSE	1-13152-0000	1
22	LOCKWASHER, HIGH COLLAR; 5/16" I.D	1-01104-1600	6
23	CAPSCREW, SOCKET HEAD	1-12732-0000	6
24	CAPSCREW, SOCKET HD; ¼-20 NCX 1 ½" LG	1-07837-0800	12
25	RETAINER, RETURN SPRING	1-00243-3500	12
26	SLEEVE	1-13177-0000	6
27	SPRING, RETURN	1-00239-1500	12
28	NUT, SELF-LOCKING; ¼-20 NC	1-07846-0800	12

7.5 CLUTCHES



5HD 200 CLUTCH-PTO WITH BRAKE
 CLUTCH NO. 1-00100-1104

ITEM	DESCRIPTION	PART NO.	QTY
1	ALLENUT, STANDARD; 5/16-24	1-12733-0000	6
2	FLANGE, FORWARD CLUTCH	1-13285-0000	1
3	DISC, CLUTCH DRIVING	1-00230-4300	7
4	DISC, CLUTCH DRIVEN	1-00233-0700	5
5	DISC, CLUTCH DRIVEN, THICK	1-00229-1700	2
6	SNAP RING, EXTERNAL	1-13282-0000	1
7	BEARING	1-13206-0000	1
8	SNAP RING, INTERNAL	1-13283-0000	1
9	SPACER	1-13280-0000	1
10	CYLINDER, CLUTCH	1-00234-8400	2
11	NUT, SELF-LOCKING	1-00226-3600	12
12	QUAD RING	1-00238-1500	2
13	QUAD RING	1-00237-1500	2
14	CARRIER	1-00219-1800	1
15	NUT, SELF-LOCKING	1-11105-0000	3
16	CAPSCREW, SOCKET HD; 10-32 NF X 1 3/4" LG	1-11104-0000	3
17	SPRING PIN; 1/8 DIA. X 3/4 LG	1-12095-1200	2
18	BUSHING, FORWARD COMMUTATOR	1-00247-1800	1
19	NAME PLATE	1-13430-0000	1
20	CAPSCREW, SOCKET HD; 1/4-28 NF X 5/8" LG	1-13424-0000	12
21	CAPSCREW, SOCKET HD; 1/4 -20 NC X 1 1/2" LG	1-07837-0800	12
22	RETAINER, RETURN SPRING	1-00243-3500	12
23	SPRING RETURN	1-00239-1500	12
24	NUT, SELF-LOCKING 1/4-28 NF	1-07846-0800	12
25	CLUTCH FLANGE ASSEMBLY REVERSE	1-13165-1000	1
26	LOCKWASHER, HIGH COLLAR; 5/16 I.D	1-01104-1600	6
27	CAPSCREW, SOCKET HEAD	1-12732-0000	6

7.6 OUTPUT SHAFT AND RELATED PARTS

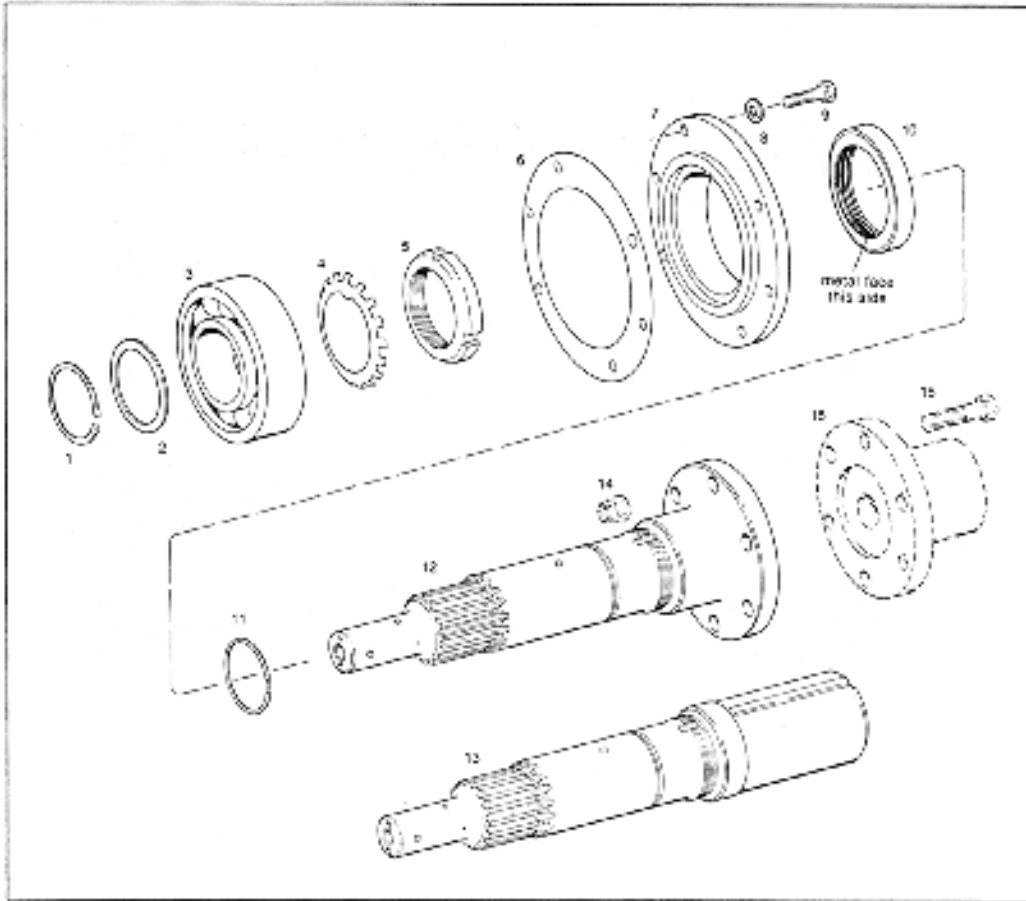


Figure 37. Output Shaft and Related Parts

ITEM	DESCRIPTION	PART NO.	QTY
1	SNAP RING	1-13036-0000	1
2	SPACER, OUTPUT SHAFT	1-01301-1400	1
3	OUTPUT BEARING, REAR	1-01313-1400	1
4	LOCKWASHER, BEARING	1-06032-1000	1
5	LOCKNUT, BEARING	1-06031-1000	1
6	GASKET, BEARING RETAINER	1-01118-1400	1
7	RETAINER, BEARING	1-00332-1700	1
8	LOCKWASHER, 5/16" DIA.	1-09458-0800	6
9	CAPSCREW, HEX HEAD, 5/16-18X1"	1-08372-0800	6
10	OIL SEAL	1-12823-0000	1
11	SNAP RING	1-04302-1400	1
12	OUTPUT SHAFT, FLANGED	1-00327-4300	1
13	OUTPUT SHAFT, KEYED	1-13284-1000	1
REFERENCE	KIT, PROP SHAFT COUPLING (SHOWN DOTTED)	1-13679-0000	1
14	HEX NUT, FLEXLOC	1-13329-0000	6
15	COUPLING, PROP SHAFT	1-12783-0000	1
16	CAPSCREW, HEX HEAD	1-09738-0800	6

7.7 OUTPUT SHAFT SUPPORT PARTS

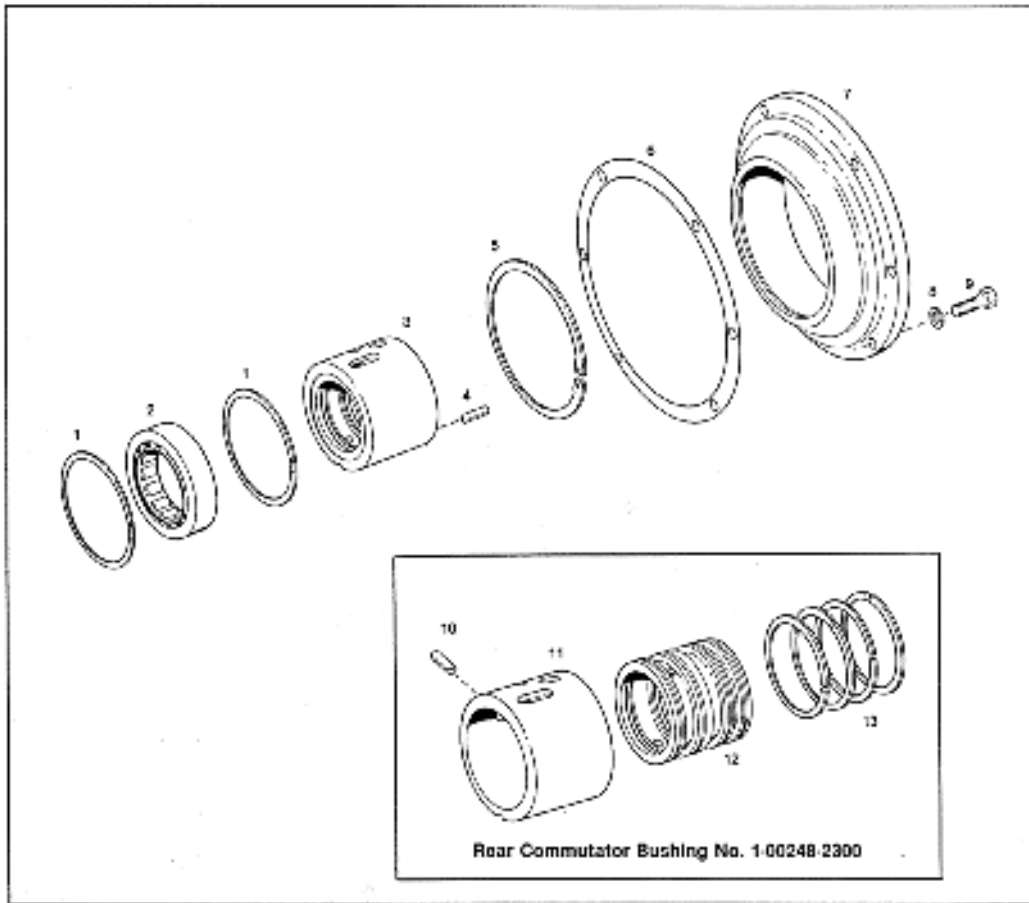


Figure 38. Output Shaft Support Parts

ITEM	DESCRIPTION	PART NO.	QTY
1	SNAP RING	1-10263-0000	2
2	ROLLER BEARING, OUTPUT SHAFT	1-01304-1400	1
3	COMMUTATOR BUSHING, REAR	1-00248-2300	1
4	SPRING PIN	1-12096-1200	1
5	RING, RETAINING	1-01314-1400	1
6	GASKET, COVER	1-01112-1100	1
7	COVER, REAR	1-01203-1400	1
8	LOCKWASHER, 3/8 DIA	1-09460-0800	6
9	CAPSCREW, HEX HEAD 3/8-16X 1"	1-07432-0800	6
10	SPRING PIN	1-12096-0700	1
11	SHELL, COMMUTATOR	1-00500-1700	1
12	SLEEVE, COMMUTATOR	1-00501-1700	1
13	RING, PISTON	1-00502-1500	4

7.8 HOUSING AND RELATED PARTS

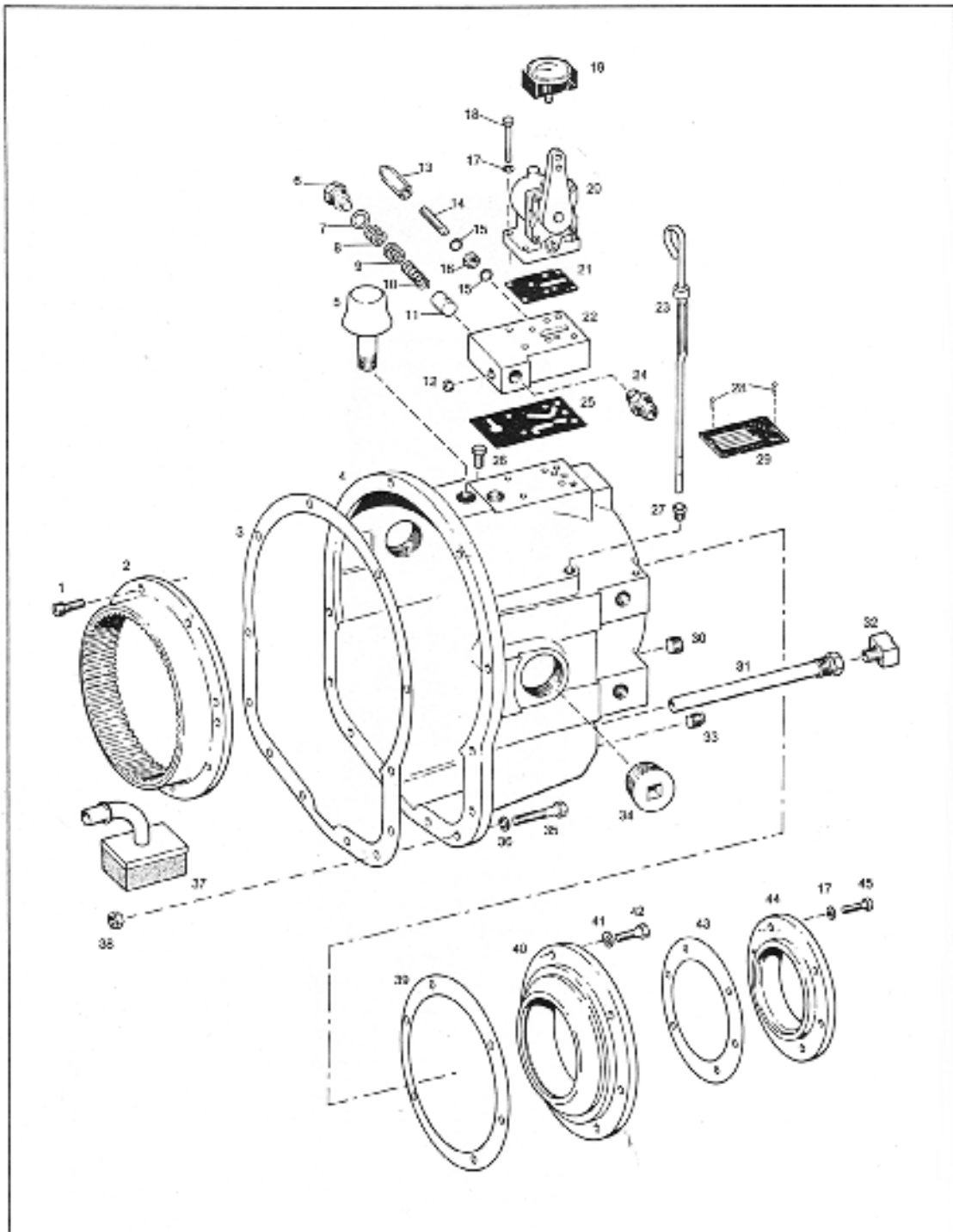


Figure 39. Housing and Related Parts

7.8 HOUSING AND RELATED PARTS

ITEM	DESCRIPTION	PART NO.	QTY.
1	CAPSCREW, SOCKET HEAD, 5/16-18X1" LG	1-01307-1400	8
2	DRUM, REVERSE	1-00250-1600	1
3	GASKET, HOUSING TO PUMP	1-01308-1400	1
4	HOUSING, REVERSE GEAR	1-01101-1500	1
5	OIL BREATHER	1-01124-1300	1
6	STOP, RELIEF VALVE	1-10285-0100	1
7	GASKET, RELIEF VALVE	1-10288-0700	1
8	WASHER, PLAIN, .015" THICK	1-10740-0000	3
9	WASHER, PLAIN, .030" THICK	1-10741-0000	3
10	SPRING, RELIEF VALVE	1-07743-0800	1
11	PLUNGER, RELIEF VALVE	1-01177-1400	1
12	PIPE PLUG, HEX SOCKET ¼-18	1-11279-0300	1
13	DOME NUT, 5/16-18	1-09461-0800	1
14	SET SCREW, SOCKET HEAD: 5/16-18X ½"	1-09466-0800	1
15	GASKET	1-09471-0800	2
16	NUT, LOCK (LIGHT); 5/16-18	1-09464-0800	1
17	LOCKWASHER, 5/16-18	1-09458-0800	0
18	CAPSCREW, HEX HEAD; ¼-20X2 ¼" LG	1-12377-0000	4
19	GAUGE, PRESSURE	1-09669-0900	1
20	ASSEMBLY, SELECTOR VALVE (SEE PG 31)	1-01175-2000	1
21	GASKET, BASEPLATE TO VALVE	1-01154-1500	1
22	BASEPLATE, SELECTOR VALVE	1-12821-0000	1
23	OIL STICK	1-01115-1400	1
24	CONNECTOR, MALE; ¼ NP X ¾-16	1-11241-1400	1
25	GASKET, BASEPLATE TO HOUSING	1-12822-0000	1
26	CAPSCREW, HEX HEAD; ½-20 NF	1-11649-0000	1
27	NUT, INVERTED FLARE; 5/16" TUBE SIZE ½-20 N.F	1-11227-0400	1
28	DRIVE SCREW, ROUND HEAD; #2X 3/16" LG	1-13275-0000	2
29	NAMEPLATE	1-11210-0000	1
30	PIPE PLUG, SOCKET HEAD; ½ N.P.T	1-11225-0300	1
31	TUBE, PUMP DISCHARGE	1-01318-1600	1
32	STREET ELBOW	1-11270-0600	1
33	PIPE PLUG, SQUARE HEAD; 3/8" N.P.T	1-11251-0300	1
34	PLUG, INSPECTION AND FILLER; 1 ½ N.P.T	1-11225-0700	2
35	CAPSCREW, HEX HEAD (SEE INSTALLATION DRAWING)		
36	LOCKWASHER	1-09460-0800	12
37	ASSEMBLY, OIL FILTER	1-01123-1400	1
38	NUT, HEX 3/8-16 NC	1-11397-0000	6
39	GASKET, COVER TO HOUSING	1-01112-1100	1
40	COVER, REAR	1-01203-1400	1
41	LOCKWASHER, 3/8" DIA.	1-09460-0800	6
42	CAPSCREW, HEX HEAD; 3/8-16X 1" LG	1-07432-0800	6
43	GASKET, BEARING RETAINER	1-01118-1400	1
44	RETAINER, BEARING	1-00332-1700	1
45	CAPSCREW, HEX HEAD; 5/16-18X1"	1-08372-0800	6

7.9 ADAPTER PARTS

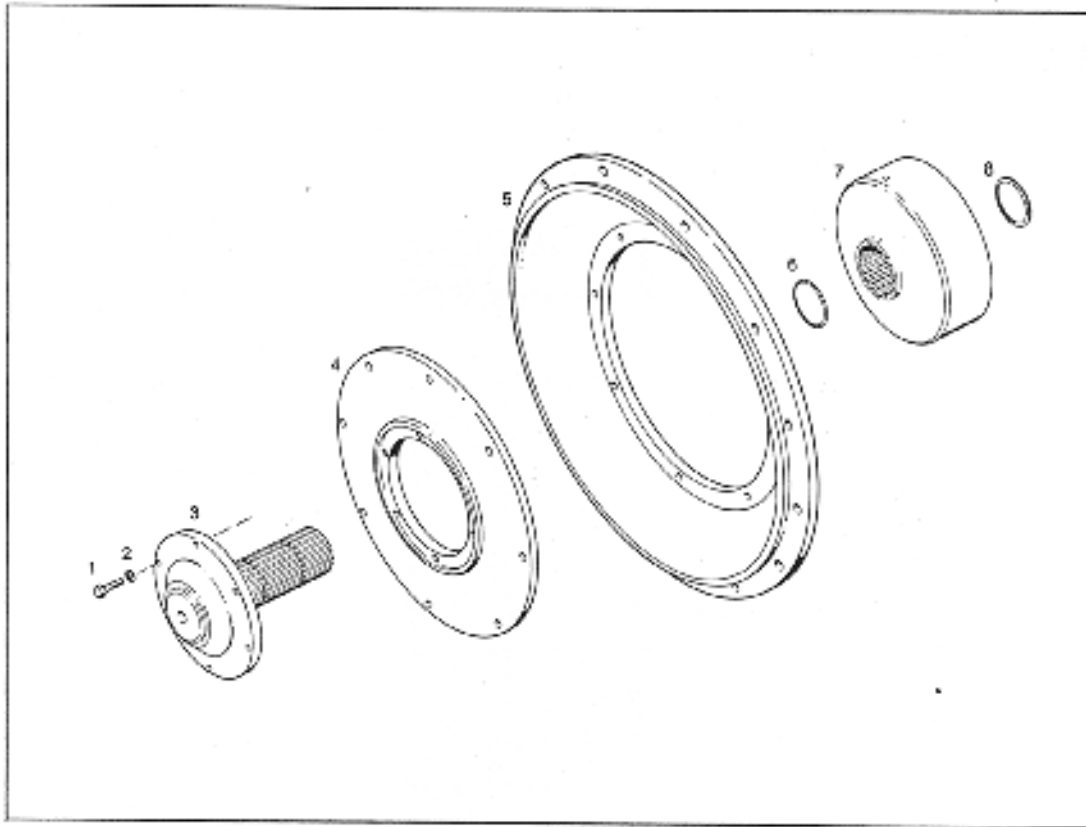
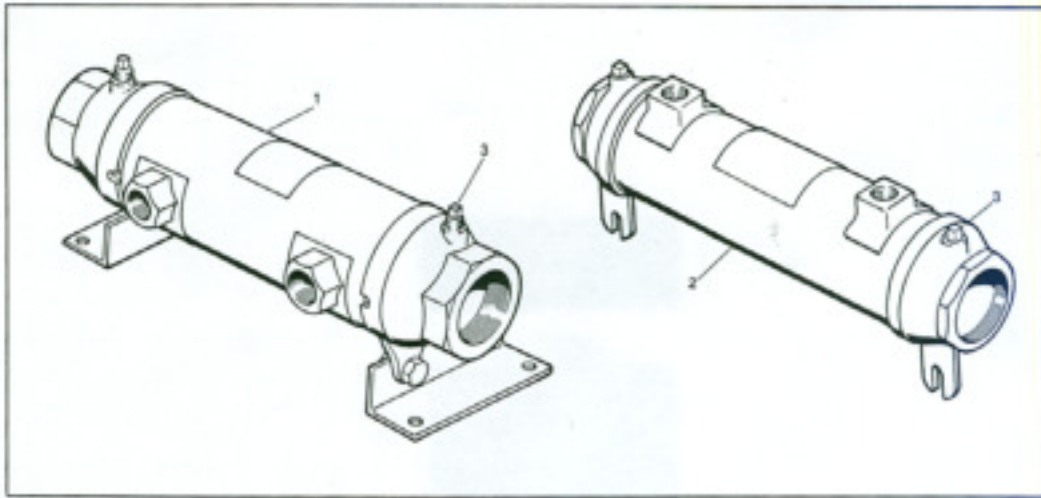


Figure 40. Adapter Group and Related Parts

ITEM	DESCRIPTION	PART NO	QTY
1	CAPSCREW, HEX HEAD	(SEE INSTALLATION DRAWING)	6
2	LOCKWASHER	(SEE INSTALLATION DRAWING)	6
3	ASSEMBLY DRIVE FLANGE & STUB SHAFT	(SEE INSTALLATION DRAWING)	1
4	ADAPTER, FLYWHEEL	(SEE INSTALLATION DRAWING)	1
5	OIL DAM	(SEE INSTALLATION DRAWING)	1
6	RING, RETAINING	1-01138-1400	1
7	DRUM, CLUTCH DRIVING	1-01116-1500	1
8	SNAP RING	1-01151-1500	1

7.10 OIL COOLERS AND HOSE FITTING KIT



ITEM	DESCRIPTION	PART NUMBER	QTY
1	OIL COOLER (SEA OR FRESH WATER) 4 3/8" DIA. X 12 3/4" LG	1-07808-5000	1
2	OIL COOLER (SEA OR FRESH WATER) 3 1/8" DIA. X 12 5/8" LG	1-12445-2100	1
3	ZINC PENCILS (SUPPLIED WITH COOLER)	1-12445-0400	2

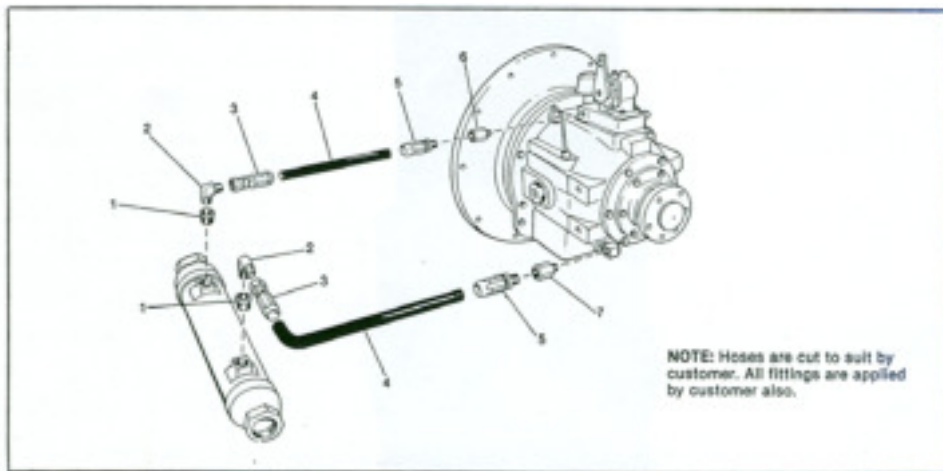


Figure 42. Hose and Fitting Kit (oil cooler not included in kit)

Hose and Fitting Kit No. 1-13887-0000 is available for use with the coolers listed above. Parts included in the kit are:

1	BUSHING 1X 1/2"	1-11253-1100	2
2	ELBOW, 90°, 7/8-14 JIC X 1/2 NPT	1-11221-1500	2
3	FEMALE FITTING	1-11282-0500	2
4	HOSE 1/2" I.D X 6'	1-11505-0000	1
5	MALE FITTING, 1/2-14 NPT	1-11283-0800	2
6	ADAPTER, 1/2X 1/4" NPT	1-11254-0200	1
7	ADAPTER, 1/2X 3/8" NPT	1-11254-0300	1