

8.3 SELECTOR VALVE

8.3 SELECTOR VALVE

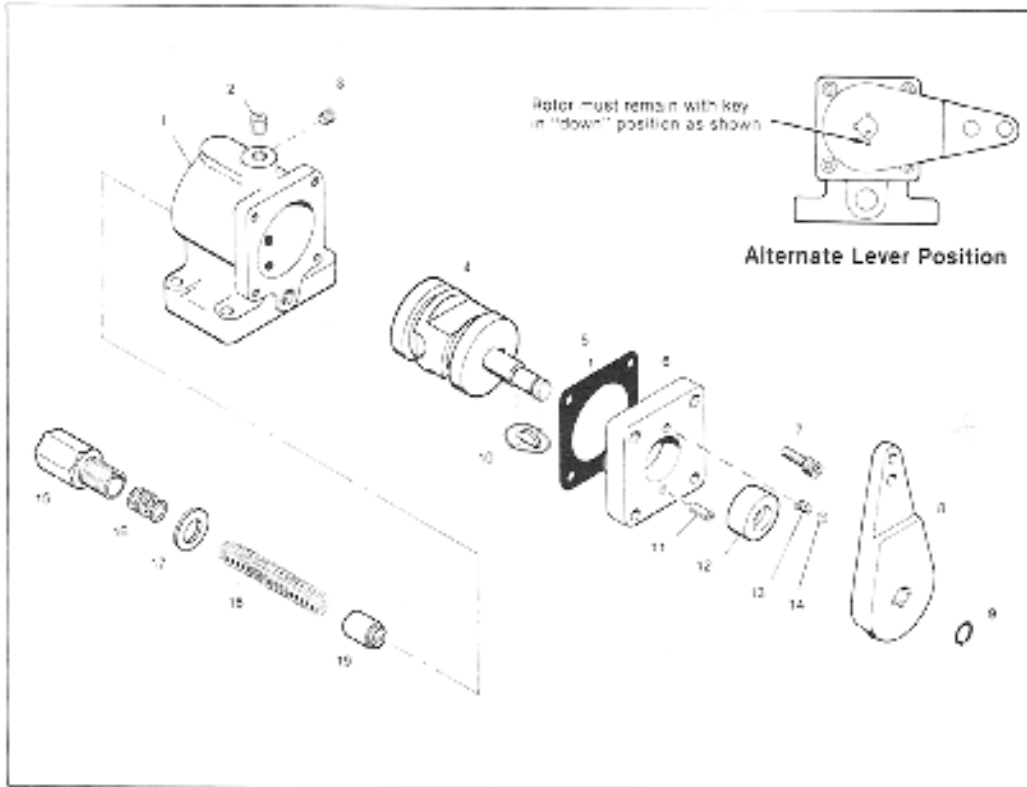


Fig. 42. Selector Valve Assembly, no. 1-09427-2000

ITEM	DESCRIPTION	PART NO	QTY
REF	ASSEMBLY, SELECTOR VALVE	1-09427-2000	1
1	BODY	1-01141-3500	1
2	PIPE PLUG, HEX SOCKET ¼ NP	1-11279-0300	1
3	PIPE PLUG, HEX SOCKET; 1/8 N.P	1-11279-0200	1
4	VALVE ROTOR	1-01144-1000	1
5	GASKET, VALVE COVER	1-01156-3700	1
6	COVER	1-01142-3400	1
7	CAPSCREW, SOCKET HD ¼-20 X ½ LG	1-09432-0800	4
8	LEVER	1-01143-4200	1
9	RETAINING RING, EXTERNAL	1-13125-0000	1
10	KEY, 3/32 X ½" DIA	1-01164-3200	1
11	SPRING PIN, ¼ DIA X ½" LG	1-12097-0800	1
12	OIL SEAL	1-01152-3200	1
13	SPRING, INDEXING	1-01132-1500	1
14	BALL, INDEXING ¼" DIA	1-11200-0000	1
15	ADJUSTMENT SCREW RELIEF	1-12617-0000	1
16	WASHER, .030" THICK	1-12619-0000	5
17	WASHER, 1/16" THICK	1-10288-0700	1
18	SPRING, RELIEF VALVE	1-12618-0000	1
19	PLUNGER, SAFETY RELIEF	1-12616-0000	1

8.4 OIL PUMP

A. Pump No. 1-13041-1000 (standard duty)

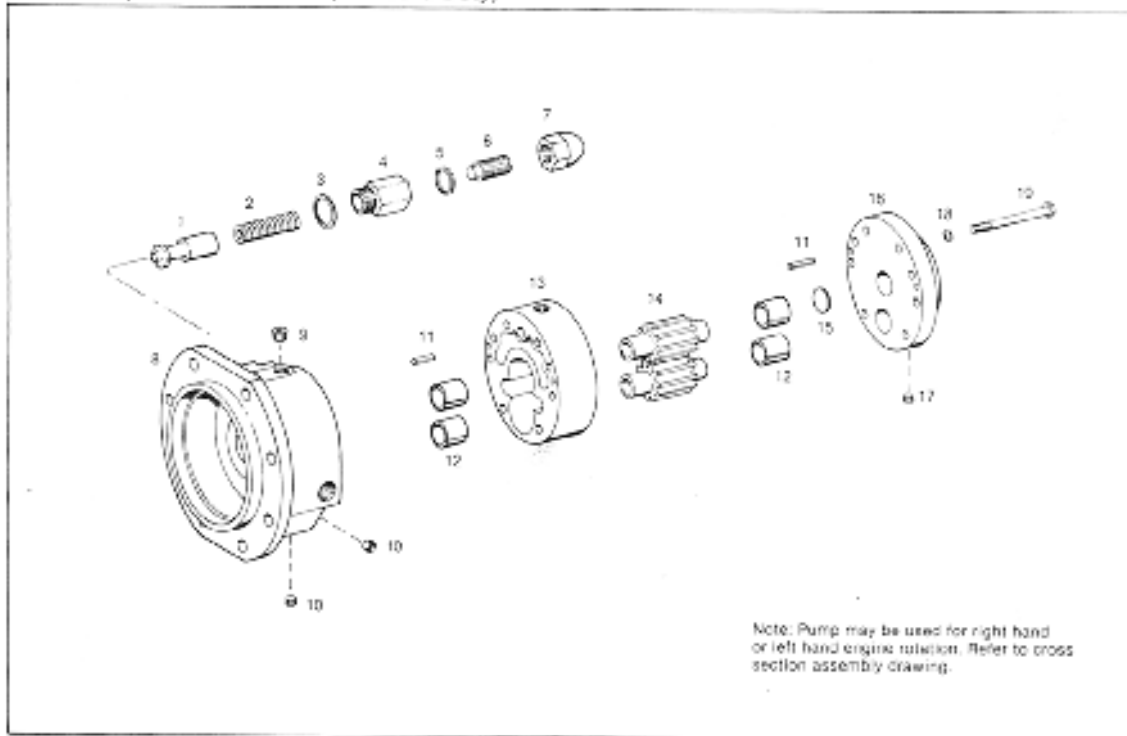


Fig. 43 Oil Pump no. 1-13041-1000

ITEM	DESCRIPTION	PART NUMBER	QTY
REF	OIL PUMP ASSEMBLY	1-13041-1000	1
1	PLUNGER	1-07725-0800	1
2	SPRING PRESSURE REGULATING	1-12602-0000	1
3	WASHER, COPPER	1-12901-0000	1
4	INSERT, RELIEF VALVE	1-12603-0000	1
5	WASHER, COPPER	1-12902-0000	1
6	SCREW, PRESSURE RELIEF	1-06660-0800	1
7	NUT, DOME	1-06667-0800	1
8	ADAPTER, OIL PUMP	1-13045-0000	1
9	PIPE PLUG	1-11279-0300	1
10	PIPE PLUG	1-11279-0200	2
11	PIPE SPRING	1-12097-1200	4
12	BUSHING, SPLIT	1-11380-0000	4
13	BODY, OIL PUMP	1-07856-3100	1
14	GEAR DRIVE	1-09688-3100	2
15	DISC FLAT	1-13731-0000	1
16	COVER, OIL PUMP	1-07723-1100	1
17	PIPE PLUG	1-11279-0100	1
18	LOCKWASHER	1-09458-0800	7
19	CAPSCREW, HEX HEAD	1-12692-0000	7

8.4 OIL PUMP

B. PUMP NO. 138500-4000: Used only with engines not exceeding 1300 max R.P.M

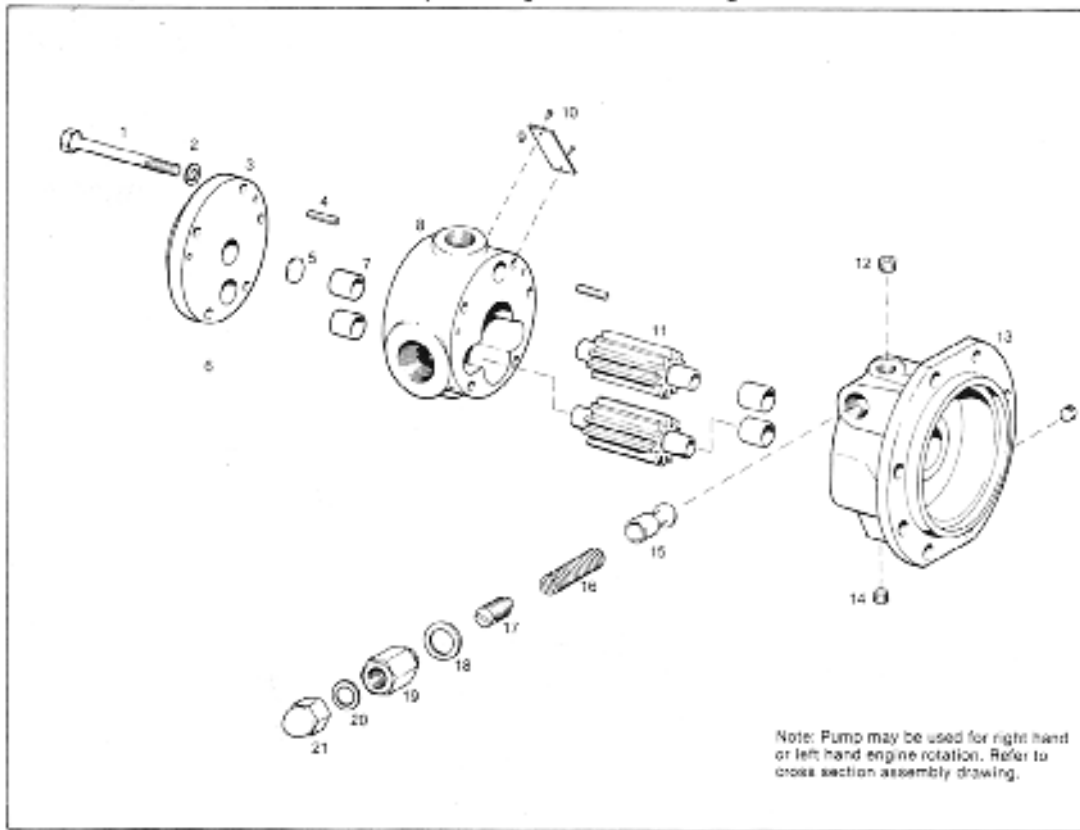


Fig. 44. 'Heavy Duty' Oil Pump no. 1-13850-4000

ITEM	DESCRIPTION	PART NUMBER	QTY
REF	OIL PUMP ASSEMBLY	1-13850-4000	1
1	CAPSCREW, HEX HEAD	1-13856-0000	5
2	LOCKWASHER	1-09460-0800	5
3	COVER, PUMP	1-13853-0000	1
4	PIN, SPRING 1/4" DIA X 1"LG	1-12097-1600	4
5	DISC, FLAT: 7/8" dia. X .074"	1-13731-0000	1
6	PIPE PLUG: 1/16 NPTF	1-11279-0100	1
7	BUSHING	1-11330-0000	4
8	BODY PUMP	1-13852-0000	1
9	PLATE, PUMP NUMBER	1-11209-0000	1
10	DRIVE SCREW, ROUND HEAD	1-13275-0000	2
11	GEAR PUMP	1-13854-0000	2
12	PIPE PLUG: 3/8 NPTF	1-11279-0400	1
13	ADAPTER PUMP	1-13851-0000	1
14	PIPE PLUG: 1/8 NPTF	1-11279-0200	2
15	SPOOL, RELIEF	1-13855-0000	1
16	SPRING, PRESSURE REGULATING	1-12602-0000	1
17	SCREW, PRESSURE ADJUSTMENT	1-06660-0800	1
18	WASHER, COPPER	1-12901-0000	1
19	INSERT, RELIEF	1-12603-0000	1
20	WASHER, COPPER	1-12903-0000	1
21	NUT, DOME	1-06667-0800	1

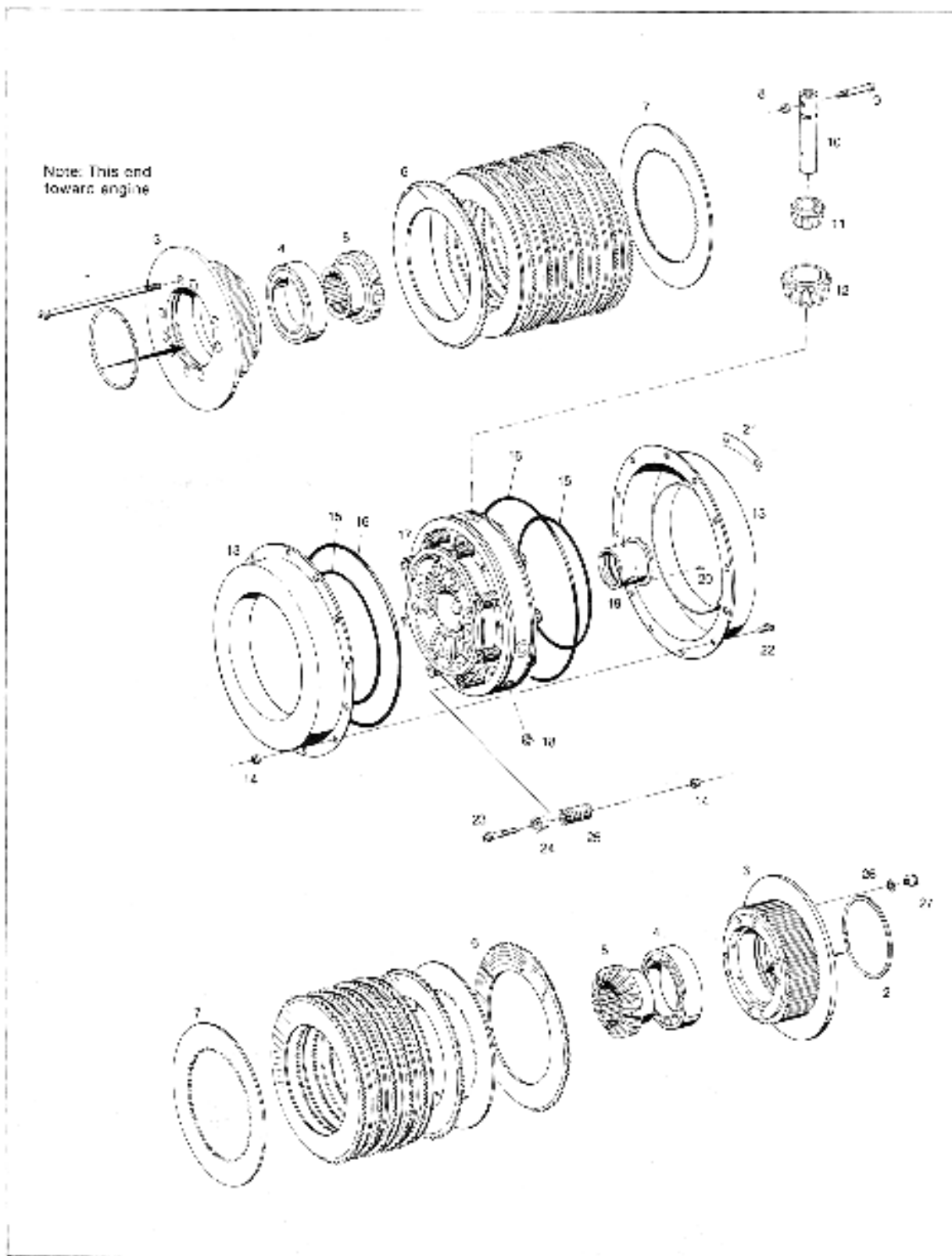


Fig. 45. Clutch Assembly No. 1-00100-2419

8.5 CLUTCH

A. No. 1-00100-2419

ITEM	DESCRIPTION	PART NUMBER	QTY
REF	CLUTCH ASSEMBLY	1-00100-2419	1
1	CAPSCREW, SOCKET HD3/8-24 X8¼"	1-12973-0000	8
2	SNAP RING	1-00222-3200	2
3	END FLANGE	1-00210-2600	2
4	BALL BEARING	1-00211-5400	2
5	BEVEL GEAR (DRIVING AND DRIVEN)	1-00216-2400	2
6	CLUTCH DISC, DRIVING	1-00230-2800	15
7	CLUTCH DISC, DRIVEN	1-00233-2400	15
8	NUT, FLEX-LOC ¼-20	1-07846-0800	4
9	CAPSCREW, SOCKET HD ¼-20 X 2"	1-12028-0000	4
10	SHAFT, BEVEL PINION	1-00220-2400	4
11	BEARING, PINION	1-00218-2500	4
12	GEAR BEVEL PINION	1-00217-1800	4
13	CLYINDER (FORWARD & REVERSE)	1-00234-2400	2
14	NUT, FLEX LOC	1-11399-0000	28
15	O-RING	1-12784-0000	2
16	O-RING	1-12785-0000	2
17	CARRIER, BEVEL GEAR	1-00219-2400	1
18	PIPE PLUG, HEX SOCKET	1-11279-0300	2
19	COMMUTATOR BUSHING	1-00247-3200	1
20	SPRING PIN 3/16 DIA X 5/8"	1-12096-1000	3
21	NAMEPLATE	1-12397-0000	1
22	CAPSCREW, SOCKET HD5/16-18 X ¾"	1-07546-0800	12
23	CAPSCREW, SOCKET HD 5/16-18 X 2"	1-09439-0800	16
24	RETAINER, RETURN SPRING	1-00243-2400	16
25	SPRING, RETURN	1-00239-3700	16
26	LOCKWASHER, HIGH COLLAR 3/8dia	1-08755-0800	8
27	ALLENUT 3/8-24	1-12999-0000	8

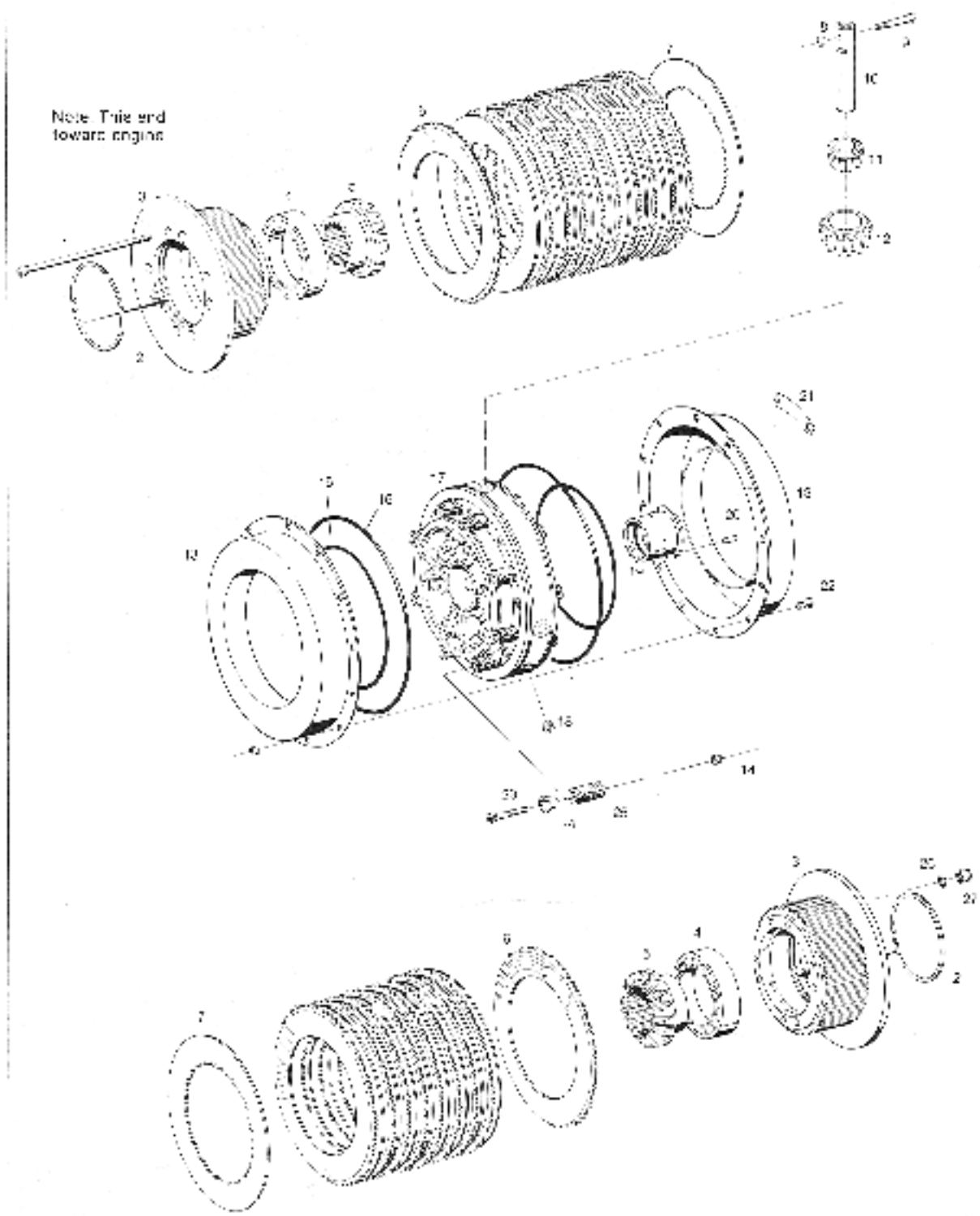
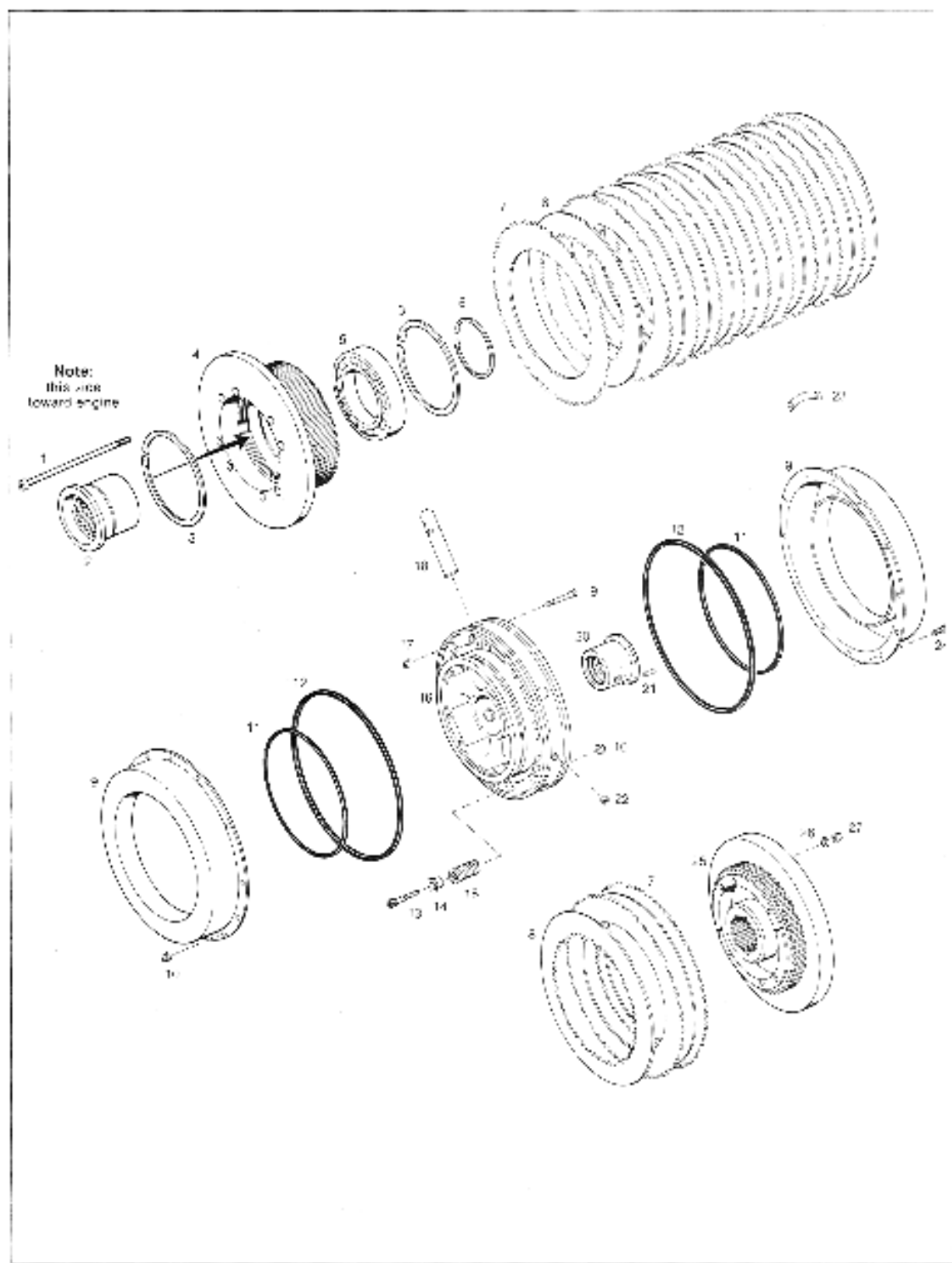


Fig. 46. Clutch Assembly No. 1-00100-2420

8.5 CLUTCH**B. No. 1-00100-2420**

ITEM	DESCRIPTION	PART NUMBER	QTY
REF	CLUTCH ASSEMBLY	1-00100-2420	1
1	CAPSCREW, SOCKET HD3/8- 24 X8 1/4"	1-12973-0000	8
2	SNAP RING	1-00222-3200	2
3	END FLANGE	1-00210-2800	2
4	BALL BEARING	1-00211-5400	2
5	BEVEL GEAR (DRIVING & DRIVEN)	1-00216-2400	2
6	CLUTCH DISC, DRIVING	1-00230-2800	19
7	CLUTCH DISC, DRIVEN	1-00233-2400	19
8	NUT, FLEX-LOC 1/4-20	1-07846-0800	4
9	CAPSCREW, SOCKET HD 1/4-20 X 2"	1-12028-0000	4
10	SHAFT BEVEL PINION	1-00220-2400	4
11	BEARING PINION	1-00218-2500	4
12	GEAR BEVEL PINION	1-00217-1800	4
13	CYLINDER (FORWARD &REVERSE)	1-00234-2400	2
14	NUT, FLEX-LOC	1-11399-0000	28
15	O-RING	1-12784-0000	2
16	O-RING	1-12785-0000	2
17	CARRIER, BEVEL GEAR	1-00219-2400	1
18	PIPE PLUG, HEX SOCKET	1-11279-0300	2
19	COMMUTATOR BUSHING	1-00247-3200	1
20	SPRING PIN 3/16 dia X 5/8"	1-12096-1000	3
21	NAMEPLATE	1-12397-0000	1
22	CAPSCREW SOCKET HD 5/16- 18X 3/4"	1-07546-0800	12
23	CAPSCREW SOCKET HD 5/16- 18 X 2"	1-09439-0800	16
24	RETAINER, RETURN SPRING	1-00243-2400	16
25	SPRING RETURN	1-00239-3700	16
26	LOCKWASHER, HIGH COLLAR 3/8 dia	1-08755-0800	8
27	ALLENUT 3/8-24	1-12999-0000	8



8.5 CLUTCH

C. No. 1-00100-4300 Power take off with Brake

ITEM	DESCRIPTION	PART NUMBER	QTY
REF	HP CLUTCH PTO W/ BRAKE	1-00100-4300	1
1	CAPSCREW SOC HD 3/8-24 X 8 1/4"	1-12973-0000	8
2	BEARING SUPPORT	1-13905-0000	1
3	SNAP RING	1-00222-3200	2
4	END FLANGE CLUTCH	1-13907-0000	1
5	BALL BEARING	1-00211-3200	1
6	SNAP RING	1-13906-0000	1
7	CLUTCH DISC DRIVING	1-00230-2800	12
8	CLUTCH DISC DRIVEN	1-00233-2400	12
9	CYLINDER	1-00234-2400	2
10	NUT FLEX-LOC 5/16-18	1-11399-0000	28
11	O-RING	1-12784-0000	2
12	O-RING	1-12785-0000	2
13	CAPSCREW, SOC HD 5/16-18 X 2"	1-09439-0800	16
14	RETAINER, RETURN SPRING	1-00243-2400	16
15	SPRING, RETURN	1-00239-3700	16
16	CARRIER BEVEL GEAR	1-00219-2400	1
17	NUT, FLEX LOC 1/4-20	1-07846-0800	12
18	SHAFT BEVEL PINION	1-00220-2400	4
19	CAPSCREW, SOC HD 1/4-20 X 2"	1-12028-0000	4
20	COMMUTATOR BUSHING	1-00247-3200	1
21	SPRING PIN, 3/16 DIA X 5/8"	1-12096-1000	3
22	PIPE PLUG HEX SOCKET 1/4-18 NPT	1-11279-0300	2
23	NAMEPLATE	1-12397-0000	1
24	CAPSCREW, SOC HD 5/16-18 X 3/4"	1-07546-0800	12
25	END FLANGE, CLUTCH	1-13904-0000	1
26	LOCKWASHER, HIGH COLLAR 3/8"dia	1-08755-0800	8
27	ALLENUT, 3/8-24	1-12999-0000	8

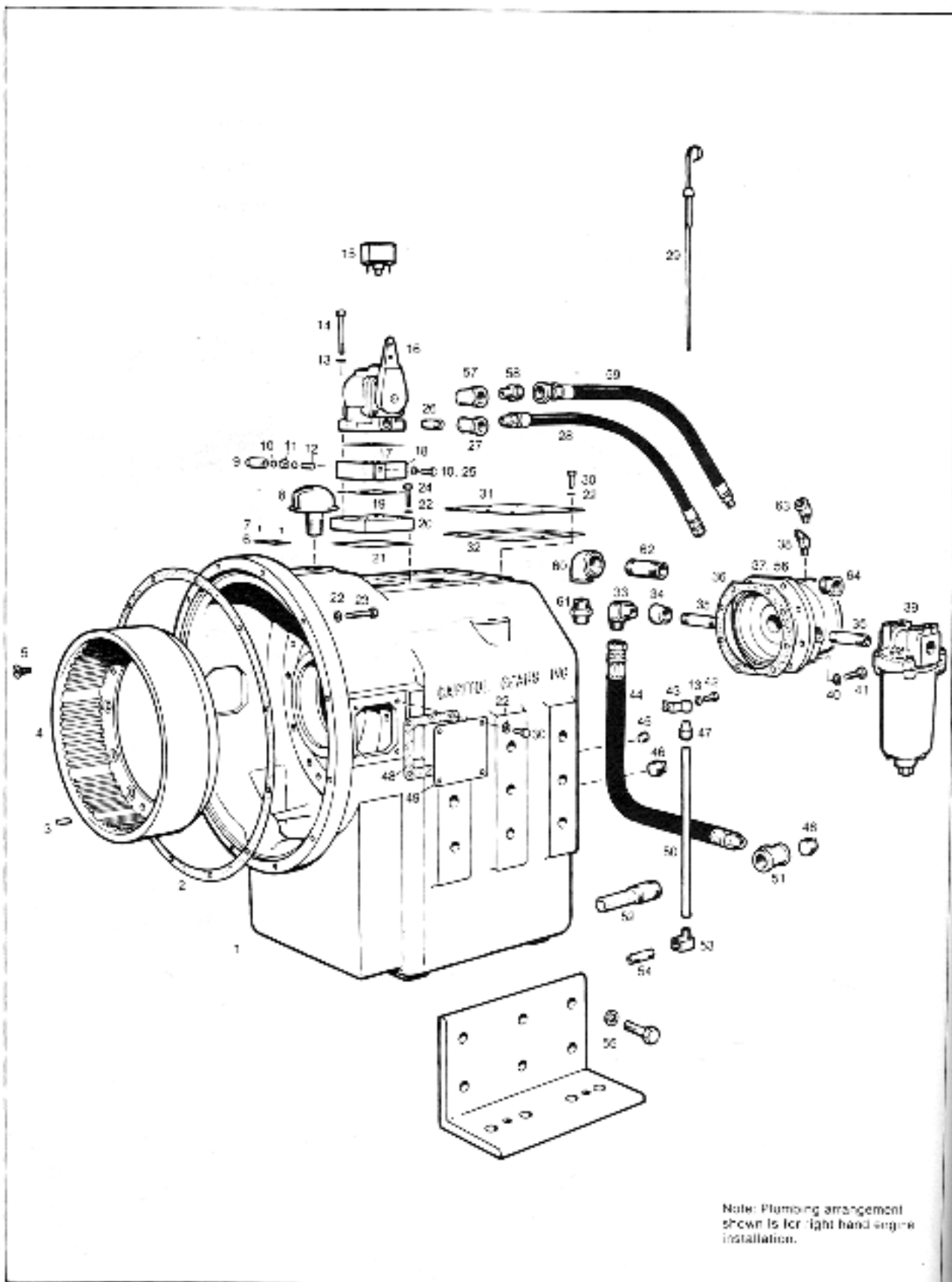


Fig. 48. HP-9400 Housing and External Parts

8.6 HP-9400 HOUSING AND EXTERNAL PARTS

ITEM	DESCRIPTION	PART NUMBER	QTY
1	HOUSING (ALL RATIOS WITHOUT IDLER)	1-13002-0000	1
	HOUSING 1:1 WITH IDLER	1-13002-0100	1
	HOUSING 1 ½:1 WITH IDLER	1-13002-0200	1
	HOUSING 2:1 WITH IDLER	1-13002-0300	1
	HOUSING 3:1 WITH IDLER	1-13002-0400	1
2	GASKET HOUSING	1-01102-3600	1
3	DOWEL PIN ½ DIA X ¾"	1-13077-0000	3
4	DRUM REVERSE CLUTCH	1-13610-0000	1
5	CAPSCREW, FLAT SOCKET HD; ½-13 X 1"	1-09741-0800	12
	SELF LOCKING	1-11210-0000	1
6	NAME PLATE	1-13275-0000	2
7	DRIVE SCREW; #2 X 3/16" LONG	1-13088-0000	1
8	OIL BREATHER	1-09461-0800	1
9	DOME NUT	1-09471-0800	3
10	GASKET	1-09464-0800	1
11	NUT, LIGHT; 5/16-18	1-09466-0800	1
12	SCREW CLUTCH TIMING 5/16-18 X 1 ½"	1-09458-0800	5
13	LOCKWASHER, 5/16 LIGHT	1-10964-0000	4
14	CAPSCREW, HEX HD 5/16-18 X ½"	1-09669-0900	1
15	GAUGE PRESSURE	1-09427-2000	1
16	ASSEMBLY, SELECTOR VALVE SEE PG 37	1-13861-0000	1
17	GASKET, SELECTOR VALVE	1-13065-0000	1
18	PLATE, BASE	1-13068-0000	1
19	GASKET, BASE PLATE	1-13063-0000	1
20	PLATE SUPPORT	1-13115-0000	1
21	GASKET, SUPPORT PLATE	1-09460-0800	32
22	LOCKWASHER, 3/8 LIGHT	1-09662-0800	12
23	CAPSCREW HEX HD: 3/8-16 X 2"	1-06751-0800	4
24	CAPSCREW HEX HD 3/8-16 X 1/14"	1-10334-0000	1
25	CAPSCREW HEX HD: 5/16-18 X ¾"	1-11259-0100	1
26	NIPPLE PIPE 3/8 DIA X 2"	1-11260-0200	1
27	TEE REDUCING; ½ X 3/8 X 3/8"	1-08873-0900	1
28	HOSE (VALVE TO PUMP)	1-12435-0000	1
29	DIPSTICK OIL	1-10965-0000	16
30	CAPSCREW, HEX HD 3/8-16 X ¾"	1-13005-0000	1
31	COVER, INSPECTION (TOP)	1-13006-0000	1
32	GASKET INSPECTION COVER (TOP)	1-11221-2400	1
33	ELBOW 90 DEG. MALE 1" NPT	1-11224-1100	1
34	REDUCER; 1-11 ½ TO ¾-14 NPT	1-11259-1700	2
35	NIPPLE ¾ X 4"	1-13049-0000	1
36	GASKET, OIL PUMP	1-13041-1000	1
37	OIL PUMP (STANDARD) SEE PG 38	1-11220-1100	1
38	ELBOW 45 MALE	1-13811-0000	1
39	FILTER OIL SEE PAGE 64	1-09462-0800	8
40	LOCKWASHER, 7/16 LIGHT	1-07106-0800	8
41	CAPSCREW HEX HD 7/16-14 X 1 ¼"	1-12145-0000	1
42	CAPSCREW HEX HD 5/16-18 X ½"	1-07915-0900	1
43	BRACKET, DIPSTICK	1-13623-0000	1
44	HOSE (SUMP TO PUMP)	1-11279-0500	1
45	PIPE PLUG HEX SOCKET ½ NPT	1-11251-0700	2
46	PIPE PLUG SQUARE HEAD 1 ¼ NPTF	1-11243-0800	1
47	NUT 45 DEG FLARE	1-12438-0000	2
48	GASKET, INSPECTION COVER (SIDE)	1-12405-0000	2
49	COVER, INSPECTION (SIDE)	1-13056-0000	1
50	TUBE, DIPSTICK	1-11255-0700	1
51	TEE 1 ¼ X 1 ¼ X 1 1/4	1-13802-0000	1
52	TUBE, SUCTION	1-11238-0700	1
53	ELBOW 90 DEG FEMALE	1-11259-0200	1
54	NIPPLE ½ X 2 ½"	1-13576-0000	1
55	KIT, MOUNTING FOOT	1-13850-4000	1
56	OIL PUMP (HEAVY DUTY) SEE PG 39	1-11260-1400	1
57	TEE, REDUCING ¾ X 3/8 X 3/4	1-11214-2100	1
58	CONNECTOR MALE, ¾ NP X 1 1/16-12	1-13859-0000	1
59	HOSE (VALVE TO PUMP)	1-11246-0700	1

60	ELBOW 90 DEG. FEMALE	1-11246-0700	1
61	CONNECTOR MALE 1 1/4 NP X 1 5/8-12	1-11214-2700	1
62	NIPPLE 1 1/4 X 5"	1-11259-4000	1
63	ELBOW 45 DEG. ST	1-11249-0500	1
64	BUSHING, PIPE 1 1/4 X 3/4"	1-11253-1300	1

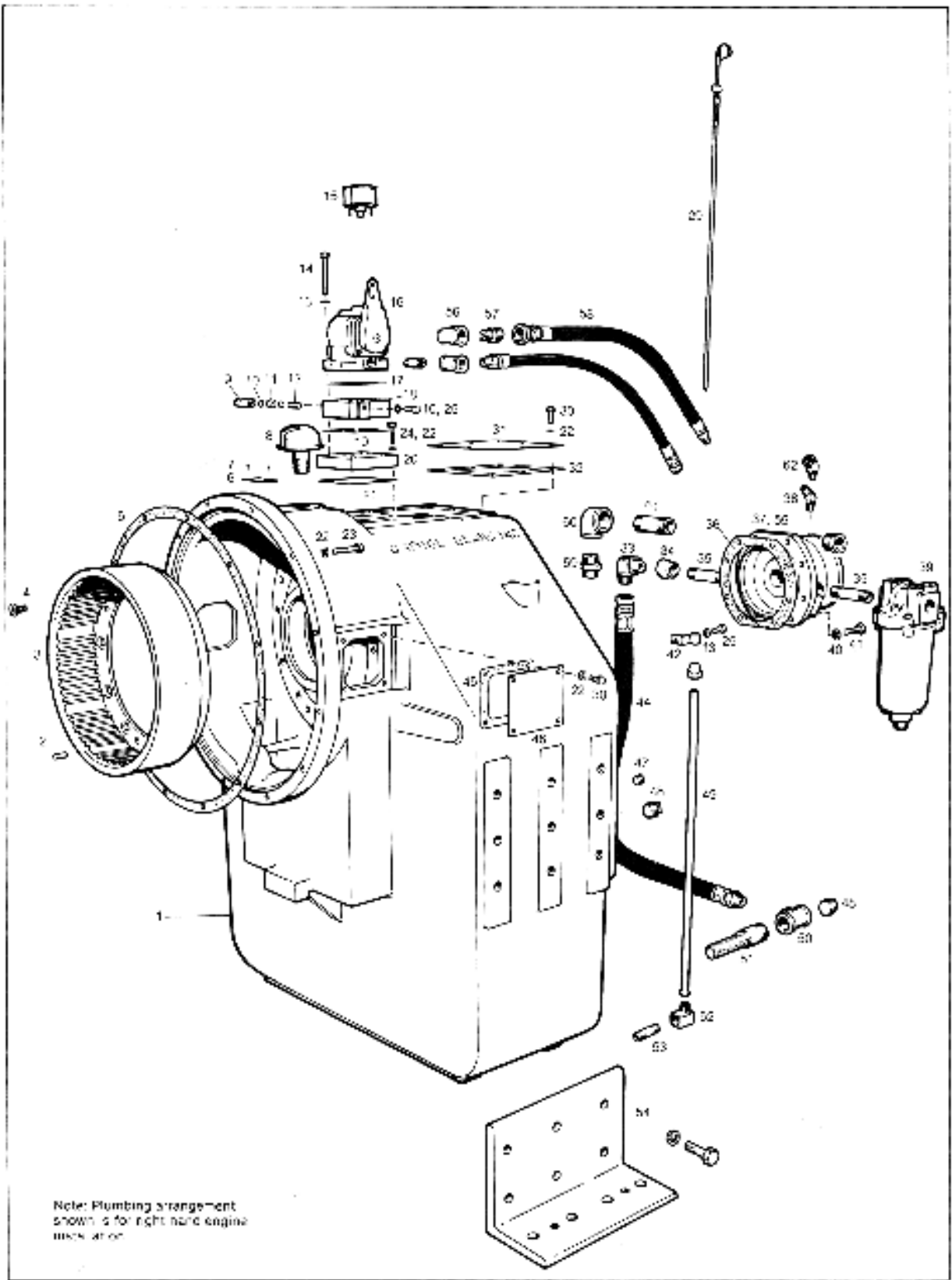


Fig. 49 HP-10500 Transmission Housing and External Parts

8.7 HP-10500 HOUSING AND EXTERNAL PARTS

ITEM	DESCRIPTION	PART NUMBER	QTY
1	HOUSING (ALL RATIOS WITHOUT IDLER)	1-13102-0000	1
	HOUSING 4:1 RATIO WITH IDLER	1-13102-0100	1
	HOUSING 5:1 RATIO WITH IDLER	1-13102-0200	1
	HOUSING 6:1 RATIO WITH IDLER	1-13102-0300	1
2	DOWEL PIN; 1/2 DIA X 3/4"	1-13077-0000	3
3	DRUM, REVERSE CLUTCH	1-13610-0000	1
4	CAPSCREW, FLAT SOCKET HD; 1/2 -13X 1 SELF LOCKING	1-09741-0800	12
5	GASKET HOUSING	1-01102-3600	1
6	NAME PLATE	1-11210-0000	1
7	DRIVE SCREW; #2 X 3/16" LONG	1-13275-0000	2
8	OIL BREATHER	1-13088-0000	1
9	DOME NUT	1-09461-0800	1
10	GASKET	1-09471-0800	3
11	NUT, LIGHT 5/16-18	1-09464-0800	1
12	SCREW, CLUTCH TIMING 5/16-18 X 1 1/2"	1-09466-0800	1
13	LOCKWASHER, 5/16 LIGHT	1-09458-0800	8
14	CAPSCREW HEX HD; 5/16-18 X 2 1/2"	1-10946-0000	4
15	GAUGE PRESSURE	1-09669-0900	1
16	ASSEMBLY, SELECTOR VALVE, PG 37	1-09427-2000	1
17	GASKET, SELECTOR VALVE	1-13861-0000	1
18	PLATE, BASE	1-13065-0000	1
19	BASKET, BASE PLATE	1-13068-0000	1
20	PLATE, SUPPORT	1-13063-0000	1
21	GASKET, SUPPORT PLATE	1-13115-0000	1
22	LOCKWASHER, 3/8 LIGHT	1-09460-0800	32
23	CAPSCREW, HEX HD 3/8-16X 2"	1-09662-0800	12
24	CAPSCREW, HEX HD 3/8-16 X 1 1/4"	1-06751-0800	4
25	CAPSCREW HEX, HD. 5/16-18 X 3/4"	1-10334-0000	3
26	NIPPLE, PIPE 3/8 DIA X 2"	1-11259-0100	1
27	TEE REDUCING 1/2 X 3/8 X 3/8"	1-11260-0200	1
28	HOSE (VALVE TO PUMP)	1-08873-0900	1
29	DIPSTICK, OIL	1-15088-0000	1
30	CAPSCREW HEX HD. 3/8-16 X 3/4"	1-10965-0000	16
31	COVER, INPSECTION (TOP)	1-13005-0000	1
32	GASKET, INSPECTION COVER (TOP)	1-13006-0000	1
33	ELBOW 90 DEG. MALE 1" NPT	1-11221-2400	1
34	REDUCER 1-11 1/2 TO 3/4 -14 NPT	1-11224-1100	1
35	NIPPLE 3/4X 4"	1-11259-1700	2
36	GASKET, OIL PUMP	1-13049-0000	1
37	OIL PUMP (STANDARD) PG 38	1-13041-1000	1
38	ELBOW 45 DEG MALE	1-11220-1100	1
39	FILTER, OIL; SEE PG 64	1-13811-0000	1
40	LOCKWASHER; 7/16 LIGHT	1-09462-0800	8
41	CAPSCREW HEX HD. 7/16-14 X 1 1/4"	1-07106-0800	8
42	BRACKET, DIPSTICK	1-07915-0900	1
43	NUT, 45 DEG. FLARE	1-11243-0800	1
44	HOSE (SUMP TO PUMP)	1-13625-0000	1
45	GASKET, INSPECTION COVER (SIDE)	1-12438-0000	2
46	COVER, INSPECTION (SIDE)	1-12405-0000	2
47	PIPE PLUG, HEX SOCKET; 1/2 NPT	1-11279-0500	1
48	PIPE PLUG, SQUARE HD. 1 1/4 NPTF	1-11251-0700	2
49	TUBE, DIPSTICK	1-13094-0000	1
50	TEE 1 1/4 X 1 1/4 X 1 1/4"	1-11255-0700	1
51	TUBE, SUCTION	1-13802-0000	1
52	ELBOW 90 DEG FEMALE	1-11238-0700	1
53	NIPPLE; 1/2-3"	1-11259-3700	1
54	KIT, MOUNTING FOOT	1-13576-0000	1
55	OIL PUMP (HEAVY DUTY) SEE PG 39	1-13850-4000	1
56	TEE, REDUCING 3/4 X 3/8 X 3/4"	1-11260-1400	1
57	CONNECTOR, MALE 3/4 NP X 1 1/16-12	1-11214-2100	1
58	HOSE (VALVE TO PUMP)	1-13859-0000	1
59	CONNECTOR MALE, 1 1/4 NP X 1 5/8-12	1-11214-2700	1
60	ELBOW 90 DEG. FEMALE	1-11246-0700	1
61	NIPPLE; 1 1/4 X 5"	1-11259-4000	1
62	ELBOW 45 DEG STREET	1-11249-0500	1
63	BUSHING, PIPE; 1 1/4 X 3/4"	1-11253-1300	1

8.8 PINION SHAFT AND RELATED PARTS

HP-9400 AND HP-10500

ITEM	DESCRIPTION	PART NUMBER	QTY
1	RING, RETAINING	1-10534-0000	2
2	BEARING, OUTER RING AND ROLLERS	1-12795-0000	1
3	SNAP RING	1-13074-0000	1
4	SPACER	1-13813-0000	1
5	RING, INNER BEARING	1-12795-2000	1
6	COMMUTATOR, REAR	1-13050-0000	1
7	TUBE, COMMUTATOR	1-13114-0000	2
8	O-RING	1-13076-0000	4
9	CAPSCREW, SOCKET HD 3/8-24 X 6"	1-13067-0000	1
10	ASSEMBLY, PINION AND SHAFT (INCLUDES PIPE PLUGS, SNAP RING, SPACER AND INNER BEARING RING)	SEE CHART P.56	1
11	BEARING, TWO ROW (4 PIECES)	1-12790-0000	1
12	O-RING	1-13078-0000	1
13	CONTAINER, BEARING	1-13007-0000	1
14	LOCKWASHER, 7/16 DIA	1-09462-0800	1
15	CAPSCREW, HEX HD 7/16-14 X 1 1/4"	1-07106-0800	1
16	WASHER, BEARING	1-13079-0000	1
17	LOCKWASHER, BEARING	1-13080-0000	1
18	LOCKNUT, BEARING	1-00335-2100	1
19	SHAFT, PUMP DRIVE (PUMP 1-10341-1000)	1-13812-0000	1
20	SHAFT, PUMP DRIVE (PUMP 1-13850-4000)	1-13857-0000	1

8.9 IDLER GEAR AND RELATED PARTS

HP-9400 AND HP-10500

ITEM	DESCRIPTION	PART NUMBER	QTY
1	RING, RETAINING	1-13035-0000	2
2	BEARING, IDLER	1-13037-0000	4
3	RING, RETAINING	1-13036-0000	2
4	SHAFT, IDLER	1-13034-0000	1
5	GEAR, IDLER	1-13028-2000	1
6	ADAPTER, PIPE	1-12320-0000	1
7	WASHER; 21/64 I.D X 1" O.D	1-10338-0000	1
8	LOCKWASHER; 5/16" DIA	1-09458-0800	1
9	CAPSCREW, HEX HD; 5/16-18 X 3/4"	1-10334-0000	1
10	HOSE, PUMP TO IDLER	1-07875-1000	1
11	ELBOW, 90 DEG. MALE	1-11221-0300	2

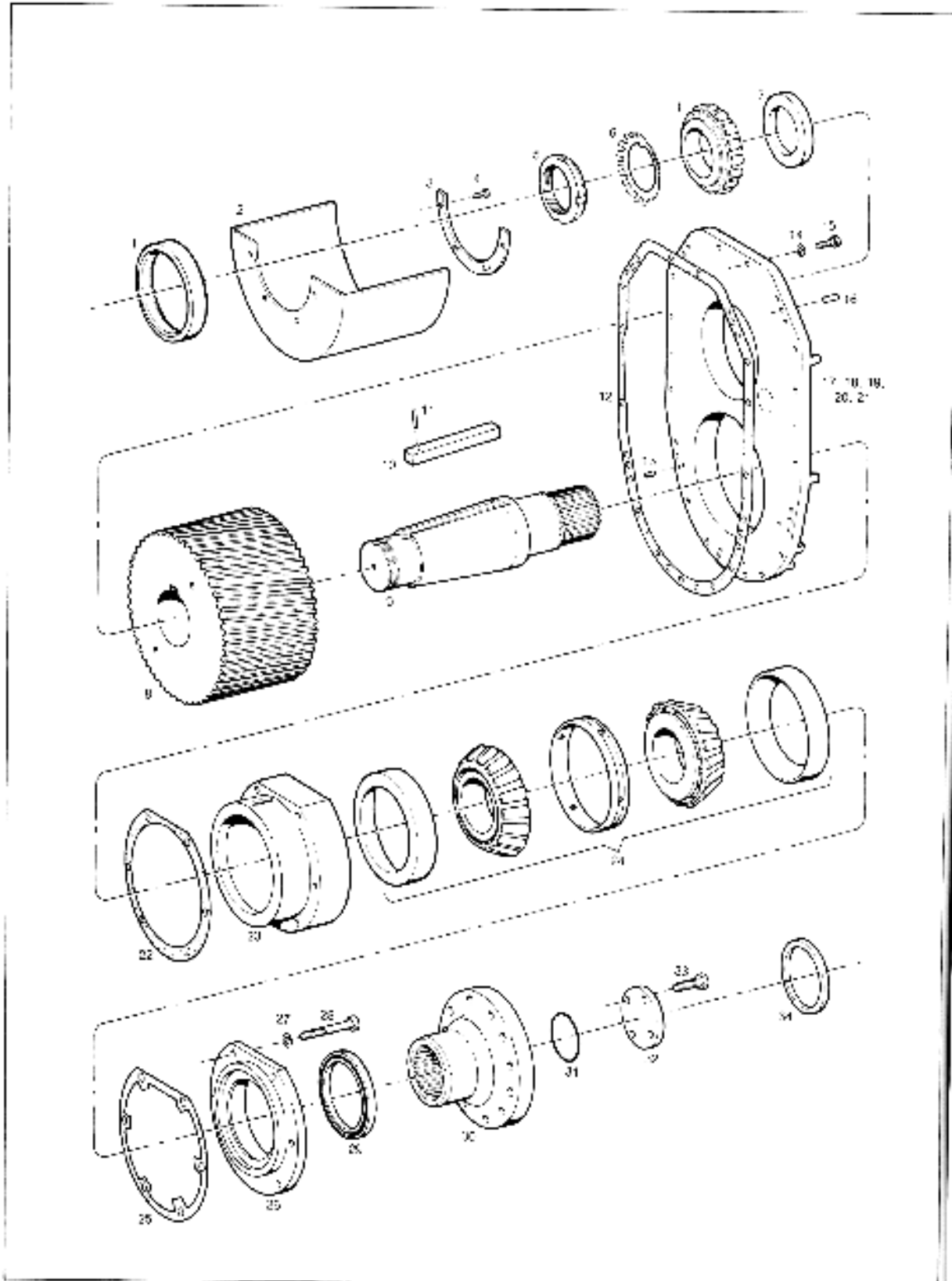


Fig. 52. HP-9400; Output Gear and Related Parts

8.10 HP-9400**OUTPUT GEAR AND RELATED PARTS**

ITEM	DESCRIPTION	PART NUMBER	QTY
1	BEARING, ROLLER (TWO PIECE)	1-10811-0000	1
2	OIL PAN	1-13051-0000	1
3	RETAINER, BEARING	1-10640-0000	1
4	CAPSCREW, HEX HD. 3/8-16 X 3/4"	1-13768-0000	4
5	LOCKNUT, BEARING	1-06830-0800	1
6	LOCKWASHER, BEARING	1-06846-0800	1
7	SPACER, BEARING	1-13031-0000	1
8	GEAR, OUTPUT	SEE CHART P.56	1
9	SHAFT, OUTPUT	1-13030-0000	1
10	KEY, OUTPUT GEAR	1-13029-0000	1
11	SPRING PIN; 3/16 DIA X 1"	1-12096-1600	1
12	GASKET, REAR COVER	1-13004-0000	1
13	SPRING PIN; 3/8 X DIA X 3/4"	1-12098-1200	4
14	LOCKWASHER; 1/2" DIA	1-11083-0000	19
15	CAPSCREW, HEX HD 1/2-13 X 1 1/2"	1-09141-0800	19
16	DOWEL PIN; 1/2 X DIA. X 1 1/4"	1-12311-0000	4
17	COVER, REAR-ALL RATIOS WITHOUT IDLER	1-13003-0000	1
18	COVER, REAR- 1:1 RATIO WITH IDLER	1-13003-0100	1
19	COVER, REAR- 1 1.2:1 RATIO WITH IDLER	1-13003-0200	1
20	COVER, REAR-2:1 RATIO WITH IDLER	1-13003-0300	1
21	COVER, REAR-3:1 RATIO WITH IDLER	1-13003-0400	1
22	GASKET, OUTPUT BEARING CONTAINER	1-13053-0000	1
23	CONTAINER, OUTPUT BEARING	1-13039-0000	1
24	BEARING, TWO ROW OUTPUT	1-13070-0000	1
25	GASKET, RETAINER	1-13194-0000	1 or 2
26	RETAINER, BEARING	1-13043-0000	1
27	LOCKWASHER, 5/8" DIA	1-06074-0800	6
28	CAPSCREW, HEX HD. 5/8-11X4 1/2"	1-13217-0000	6
29	OIL SEAL	1-13197-0000	1
30	FLANGE, OUTPUT	1-13825-0000	1
31	O-RING	1-10637-0000	1
32	PLATE, RETAINER	1-10638-0000	1
33	CAPSCREW, HEX HD. 3/4-10 X 2 1/4"	1-13628-0000	4
34	RING, PILOT	1-06022-0800	1

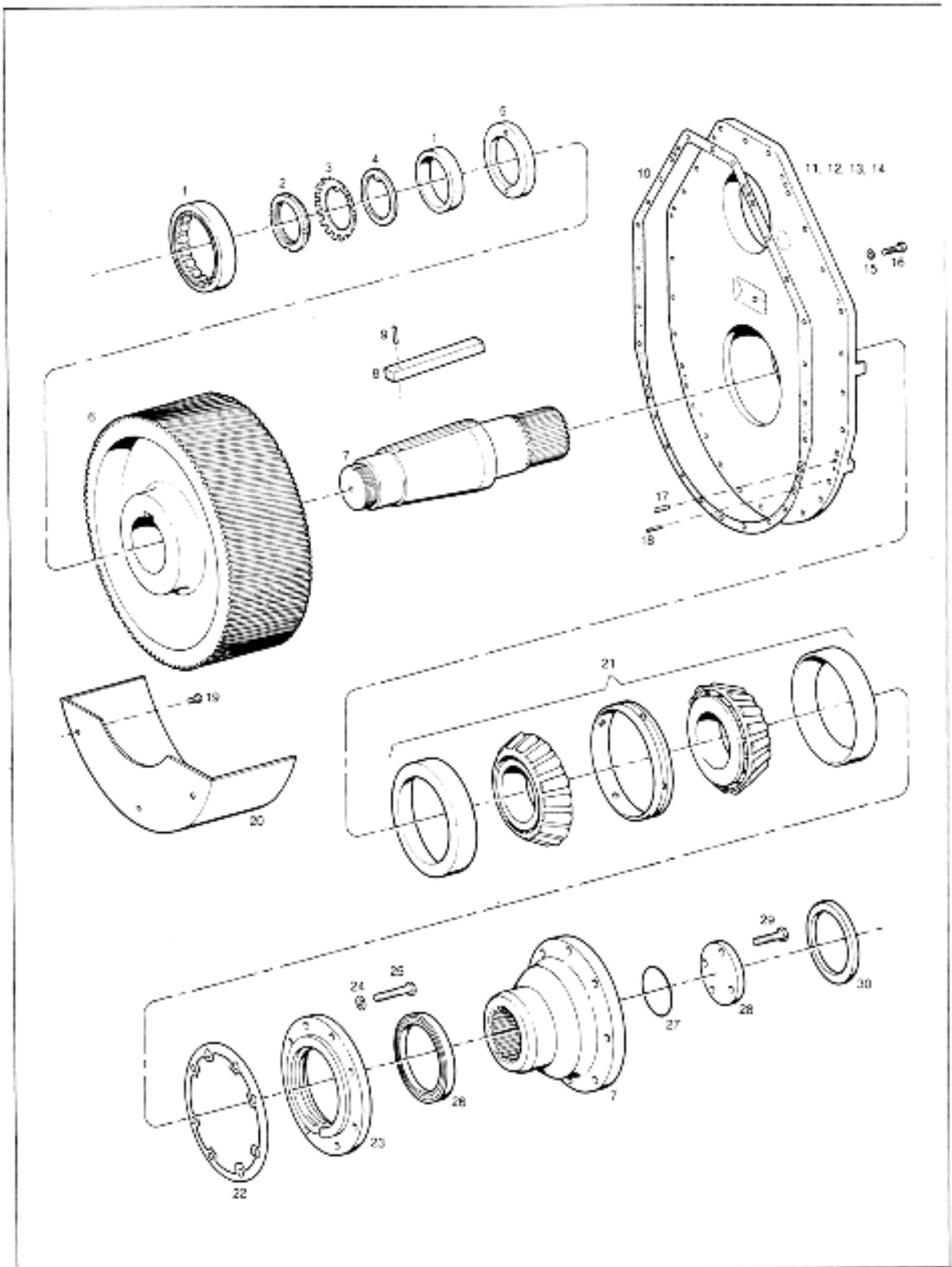


Fig. 53. HP-10500 Output Gear and Related Parts

8.11 HP-10500

OUTPUT GEAR AND RELATED PARTS

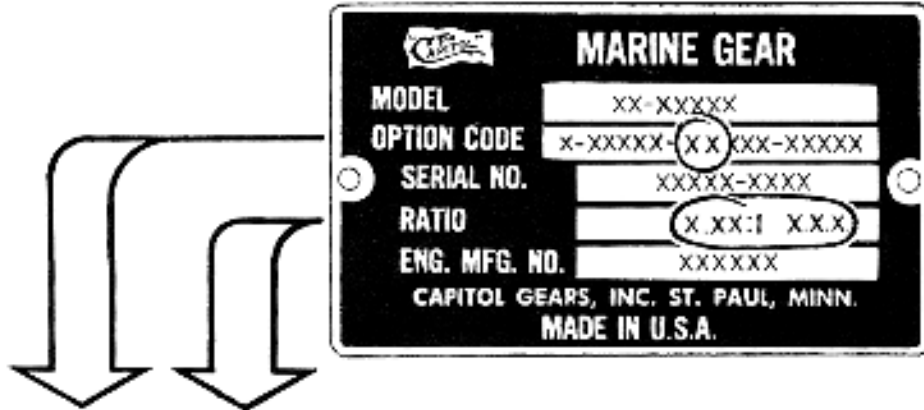
ITEM	DESCRIPTION	PART NUMBER	QTY
1	BEARING, ROLLER	1-13150-0000	1
2	LOCKNUT, BEARING	1-09511-0800	1
3	LOCKWASHER, BEARING	1-13190-0000	1
4	WASHER, BEARING	1-13189-0000	1
5	SPACER, BEARING	1-13112-0000	1
6	GEAR, OUTPUT	SEE CHART P.56	1
7	ASSEMBLY, SHAFT AND OUTPUT COUPLINGS	1-13616-0000	1
8	KEY, OUTPUT SHAFT		
9	SPRING PIN, 3/16 DIA. X 1 1/4"	1-13113-0000	1
10	GASKET, REAR COVER	1-12096-2000	1
11	COVER, REAR-ALL RATIOS WITHOUT IDLER	1-13106-0000 1-13103-0000	1 1
12	COVER, REAR- 4:1 RATIO W/ IDLER	1-13103-0100	1
13	COVER, REAR-5:1 RATIO WITH IDLER	1-13103-0200	1
14	COVER, REAR-6:1 RATIO WITH IDLER	1-13103-0300	1
15	LOCKWASHER, 1/2" LIGHT		
16	CAPSCREW, HEX HD. 1/2-13 X 1 3/4"	1-11083-0000	28
17	DOWEL PIN; 1/2 DIA. X 1 1/2"	1-10058-0000	28
18	SPRING PIN; 3/8 DIA. X 1"	1-11142-0000	4
19	CAPSCREW, HEX HD. 1/2-13 X 1" SELF-LOCKING	1-12098-1600 1-13805-0000	4 3
20	OIL PAN		
21	BEARING, OUTPUT (5 PIECES)	1-13109-0000	1
22	GASKET, BEARING RETAINER	1-13117-0000	1
23	REATER, BEARING	1-13195-0000	1
24	LOCKWASHER, 3/4" LIGHT	1-13198-0000	1
25	CAPSCREW, HEX HD. 3/4-10 X 2 1/4"	1-11516-0000	8
26	OIL SEAL	1-09649-0800	8
27	O-RING	1-13087-0000	1
28	PLATE, RETAINER	1-13093-0000	1
29	CAPSCREW, HEX HD. 3/4-10 X 2 1/4" SELF LOCKING	1-13108-0000 1-13628-0000	1 1
30	RING, PILOT	1-10547-0000	1

8.12 REDUCTION GEAR SELECTION CHART

HOW TO SELECT THE CORRECT PINION AND OUTPUT GEAR FOR YOUR TRANSMISSION:

- A. LOCATE THE NAMEPLATE (ON TOP OF HOUSING) AND DETERMINE THE TWO REDUCTION RATIO OPTION CODE NUMBERS (CIRCLED IN SAMPLE BELOW) AND THE RATIO. THE NUMBER OF TEETH MAY BE CHECKED ALSO.

- B. MATCH THIS INFORMATION WITH THE CHART BELOW TO DETERMINE THE CORRECT PART NUMBER(S).



HP-9400

OPTION CODE	RATIO	PART NAME	NO. OF TEETH	PART NUMBER
01	1.037:1 AER	PINION	54	1-13014-1000
		GEAR	56	1-13024-2000
02	1.500:1 AER	PINION	44	1-13008-1000
		GEAR	66	1-13018-2000
03	2.056:1 AER	PINION	36	1-13009-1000
		GEAR	74	1-13019-2000
04	3.074:1 AER	PINION	27	1-13010-1000
		GEAR	83	1-10320-2000
05	1.024:1 ER	PINION	44	1-13011-1000
		GEAR	45	1-13025-2000
06	1.500:1 ER	PINION	36	1-13121-1000
		GEAR	54	1-13021-2000
07	2.032:1 ER	PINION	31	1-13012-1000
		GEAR	63	1-13022-2000
08	3.038:1 ER	PINION	26	1-13013-1000
		GEAR	79	1-13023-2000
09	1.340:1 AER	PINION	47	1-13026-1000
		GEAR	63	1-13022-2000

HP-10500

OPTION CODE	RATIO	PART NAME	NO. OF TEETH	PART NUMBER
01	4.00:1 AER	PINION	37	1-13118-1000
		GEAR	148	1-13128-0000
02	4.96:1 AER	PINION	51	1-13119-1000
		GEAR	154	1-13129-0000
03	6.11:1 AER	PINION	26	1-13120-1000
		GEAR	159	1-13130-0000
04	4.00:1 ER	PINION	36	1-13121-1000
		GEAR	144	1-13131-0000
05	4.96:1 ER	PINION	30	1-13122-1000
		GEAR	149	1-13132-0000
06	6.12:1 ER	PINION	25	1-13123-1000
		GEAR	153	1-13133-0000

**8.13 HP-9400 AND HP-10500
ADAPTER PARTS**

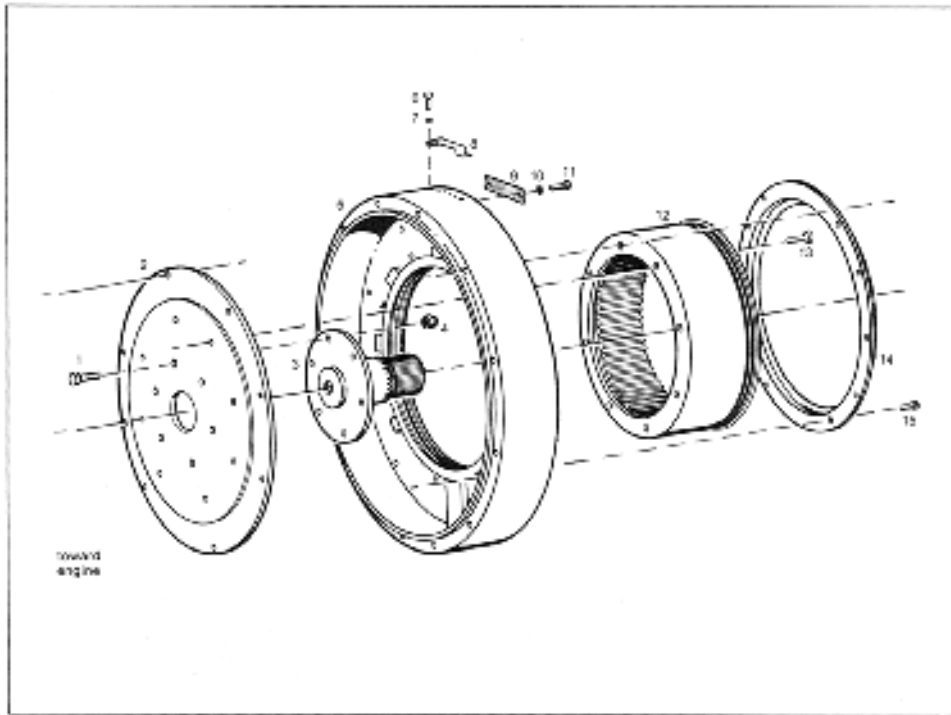


Fig. 54. HP-9400 and HP-10500 Adapter Parts

ITEM	DESCRIPTION	PART NUMBER	QTY
1	CAPSCREW, HEX HD. 3/4-10 X 2"	1-12793-0000	6
2	FLYWHEEL ADAPTER (SEE APPROPRIATE INSTALLATION DRAWING)		1
3	DRIVE FLANGE ASS'Y	1-13711-1000	1
4	NUT; SELF-LOCKING 3/4-10 NC	1-13095-0000	6
5	OIL DAM ADAPTER (SEE APPROPRIATE INSTALLATION DRAWING)		1
6	CAPSCREW, HEX HD. 1/4-20 X 3/4"	1-11101-0000	2
7	LOCKWASHER; 1/4" DIA	1-05309-0800	2
8	COVER, AIR VENT (TOP)	1-10528-0000	1
9	COVER, AIR VENT (SIDE)	1-01118-2700	1
10	LOCKWASHER, 5/16" DIA	1-09458-0800	1
11	CAPSCREW, HEX HEAD 5/16"-18 X 5/8"	1-06987-0800	2
12	DRUM, CLUTCH DRIVING	1-01116-6800	1
13	CAPSCREW, HEX HEAD; 1/2 X 1 1/4" SELF LOCKING	1-13134-0000	8
14	SLINGER SHIELD	1-01119-2700	1
15	CAPSCREW, DRILLED SOCKET HD. 5/16-18 X 3/4"	1-08035-0800	10

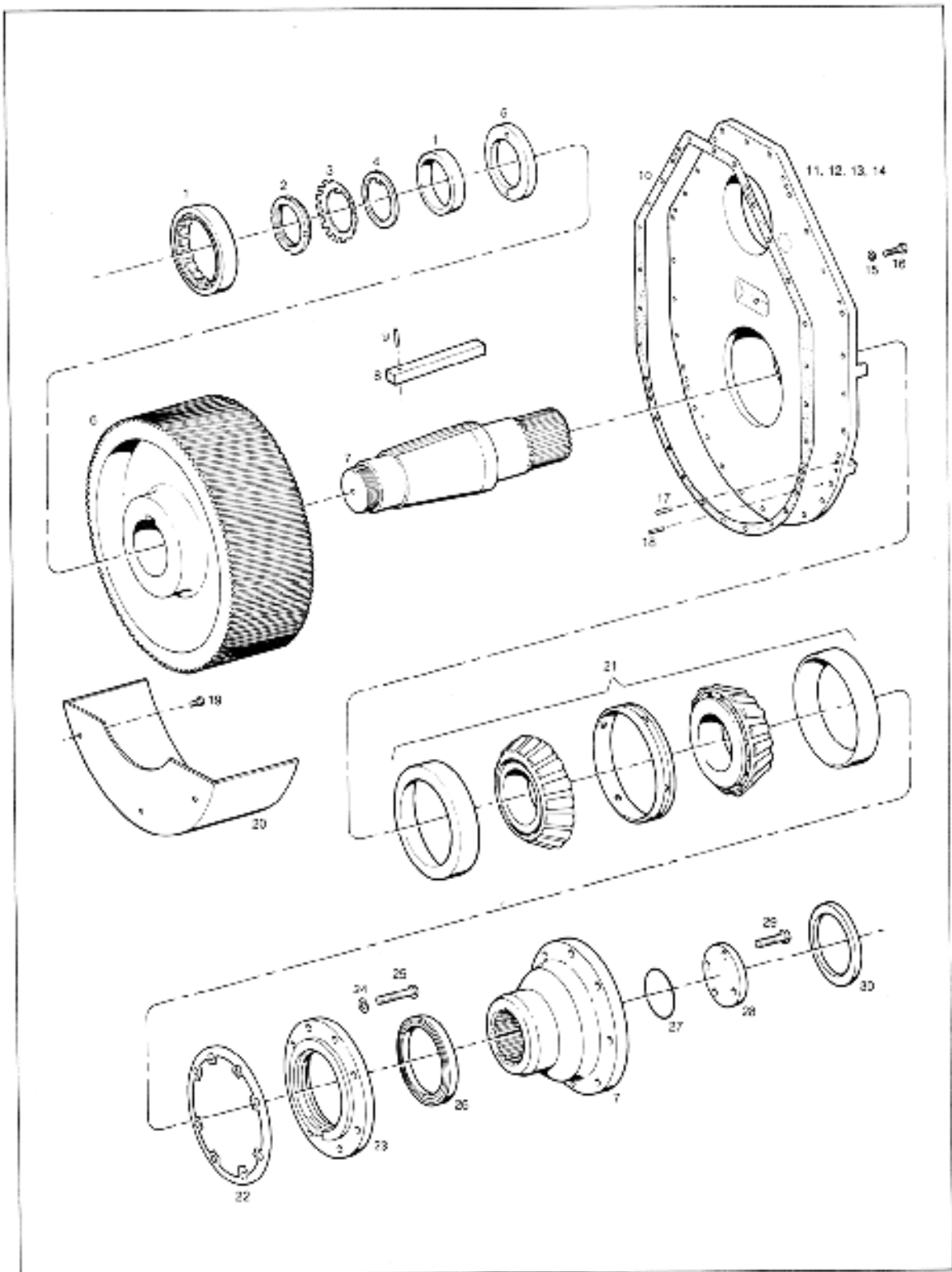


Fig. 53. HP-10500 Output Gear and Related Parts

8.14 COUPLING AND ADAPTER KIT

HP 9400/ HP 10500

ITEM	DESCRIPTION	PART NUMBER	QTY
REF	INDEPENDENT MOUNT WITH TORSIONAL COUPLING	1-13841-0000	1
1	ADAPTER, FLYWHEEL	1-13818-0000	1
2	CAPSCREW, HEX HD. 1/2-13 X 1 1/4 SELF LOCKING	1-13134-0000	21
3	PLATE, RETAINER	1-13817-0000	1
4	ASSEMBLY, FLEXIBLE COUPLING	1-13819-0000	1
5	BLOCK, FLEXIBLE COUPLING (INCLUDED WITH ITEM #4)	1-13819-1000	10
6	SPRING PIN, 3/16 X DIA. X 3/4"	1-12096-1200	1
7	KEY, SQUARE 5/8 X 5/8 X 4 1/4"	1-11421-0000	1
8	HOUSING, ALIGNMENT	1-13821-0000	1
9	LOCKWASHER, 1/4" DIA, LIGHT	1-05309-0800	10
10	CAPSCREW, HEX HD. 1/4-20 X 1/2"	1-08087-0800	10
11	COVER, ALIGNMENT, HOUSING	1-13827-0000	2
12	CAPSCREW, HEX HD. 3/8-16 X 1"	1-07432-0800	6
13	LOCKWASHER, 3/8" LIGHT	1-09460-0800	6
14	OIL SEAL	1-13713-0000	1
15	RETAINER, OIL SEAL	1-13741-0000	1
16	GASKET, RETAINER	1-13740-0000	1
17	LOCKNUT, BEARING	1-00507-0400	1
18	LOCKWASHER, BEARING	1-13823-0000	1
19	WASHER, BEARING	1-13822-0000	1
20	CONE, BEARING	1-11627-0100	2
21	CUP, BEARING	1-11627-0200	2
22	CONTAINER, BEARING	1-13830-0000	1
23	PIPE PLUG, HEX SOCKET 1/4 NPT	1-11279-0300	1
24	LOCKWASHER, 7/16 LIGHT	1-09462-0800	12
25	CAPSCREW, HEX HD 7/16-14 X 3 1/2"	1-13829-0000	12
26	CAPSCREW, SOCKET HD;7/16-14X1 3/4"	1-10152-0000	4
27	OIL TROUGH	1-13828-0000	1
28	DRIVE SHAFT AND FLANGE	1-13815-0000	1
29	DRUM, CLUTCH DRIVING	1-01116-4000	1

8.14 B. INDEPENDENT MOUNT
FOR HP-9400 AND HP-10500 TRANSMISSIONS

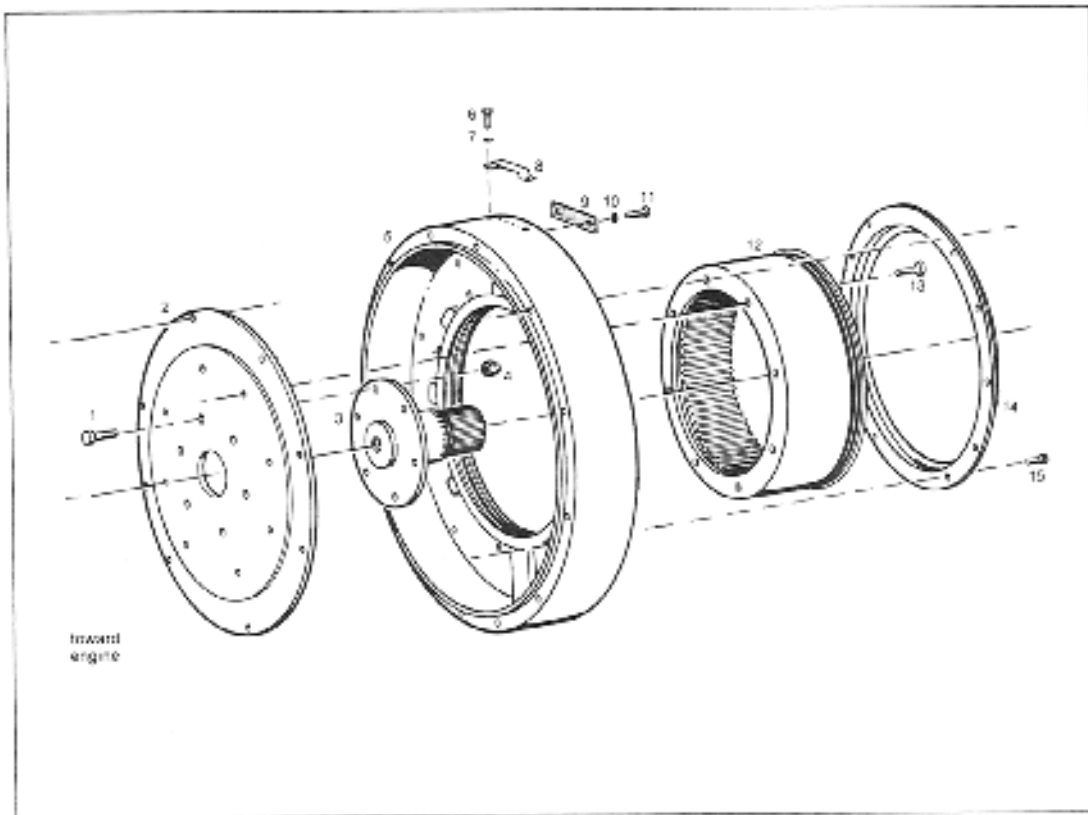


Fig. 54. HP-9400 and HP-10500 Adapter Parts

ITEM	DESCRIPTION	PART NUMBER	QTY
REF.	INDEPENDENT MOUNT	1-13772-0000	1
1	CAPSCREW, HEX HD. 3/8-16 X 1"	1-07432-0800	6
2	LOCKWASHER, 3/8"	1-09460-0800	18
3	OIL SEAL	1-13713-0000	1
4	RETAINER, OIL SEAL	1-13741-0000	1
5	GASKET, RETAINER	1-13740-0000	1
6	LOCKNUT, BEARING	1-00507-0400	1
7	LOCKWASHER, BEARING	1-13823-0000	1
8	WASHER, BEARING	1-13822-0000	1
9	CONE, BEARING	1-11627-0100	2
10	CUP, BEARING	1-11627-0100	2
11	CUP, BEARING	1-11627-0200	2
12	CONTAINER, BEARING	1-13737-0000	1
13	HOSE	1-13599-0000	1
14	FITTING, METERING	1-12989-2600	1
15	BUSHING, 1/2 X 1/4"	1-11253-0500	1
16	TEE	1-11255-0400	1
17	NIPPLE	1-11233-0400	1
18	CAPSCREW, HEX HD. 3/8-16 X 2"	1-09662-0800	12
19	ASSEMBLY, DRIVE SHAFT AND FLANGE	1-13738-0000	1
20	DRUM, CLUTCH DRIVING	1-01116-6800	1
21	CAPSCREW, HEX HD; 1/2-13 X 1 1/4" (SELF LOCKING)	1-13134-0000	8

8.15 PROPELLER COUPLING KITS

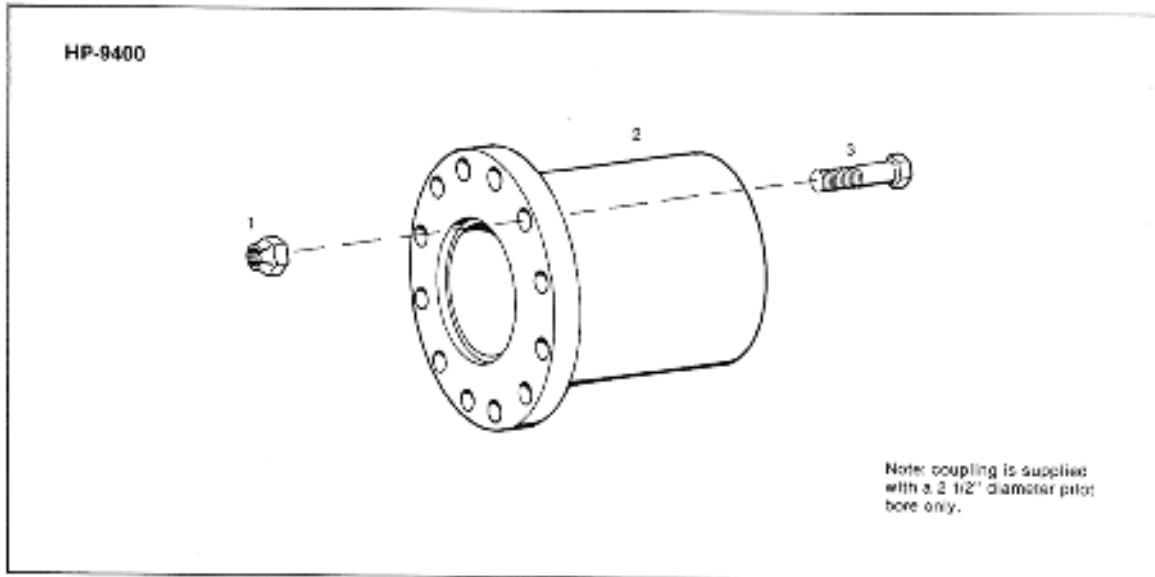


Fig. 57. HP-9400 Propeller Coupling Kit

ITEM	DESCRIPTION	PART NUMBER	QTY
REF.	PROPELLER COUPLING KIT	1-13577-1000	1
1	NUT, SELF LOCKING 3/4-10 NC	1-13095-0000	12
2	COUPLING, PROP SHAFT	1-13826-0000	1
3	CAPSCREW, HEX HD. 3/4-10 NC X 3 1/4"	1-08793-0800	12

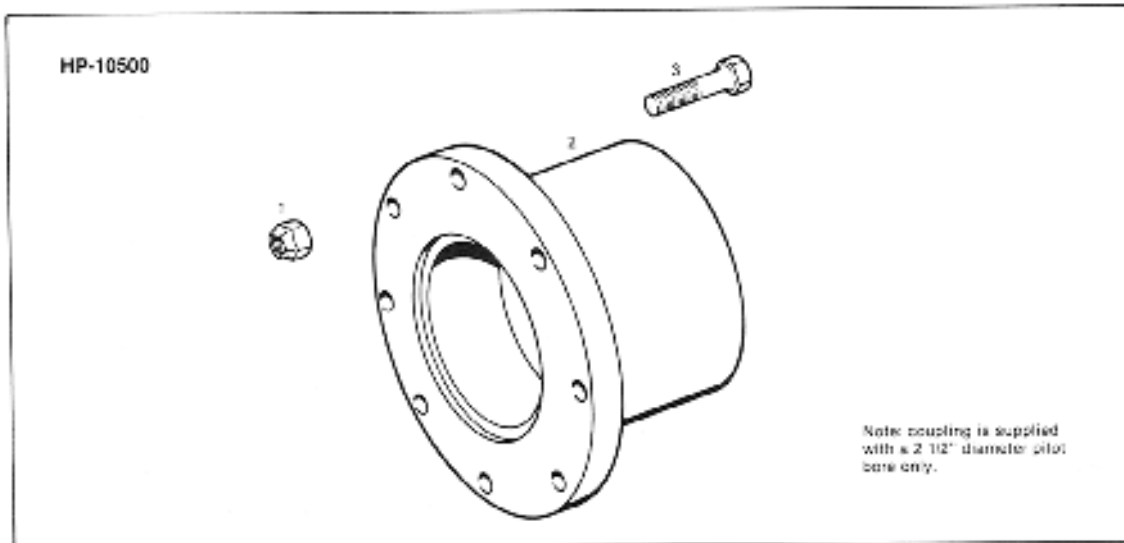


Fig. 58. HP-10500 Propeller Coupling Kit

ITEM	DESCRIPTION	PART NUMBER	QTY
REF.	PROP COUPLING KIT	1-13575-0000	1
1	NUT, SELF LOCKING	1-13096-0000	8
2	PROP SHAFT COUPLING	1-10320-2000	1
3	CAPSCREW, HEX HEAD 7/8 X 3 3/4"	1-13212-0000	8

8.16 OIL COOLERS

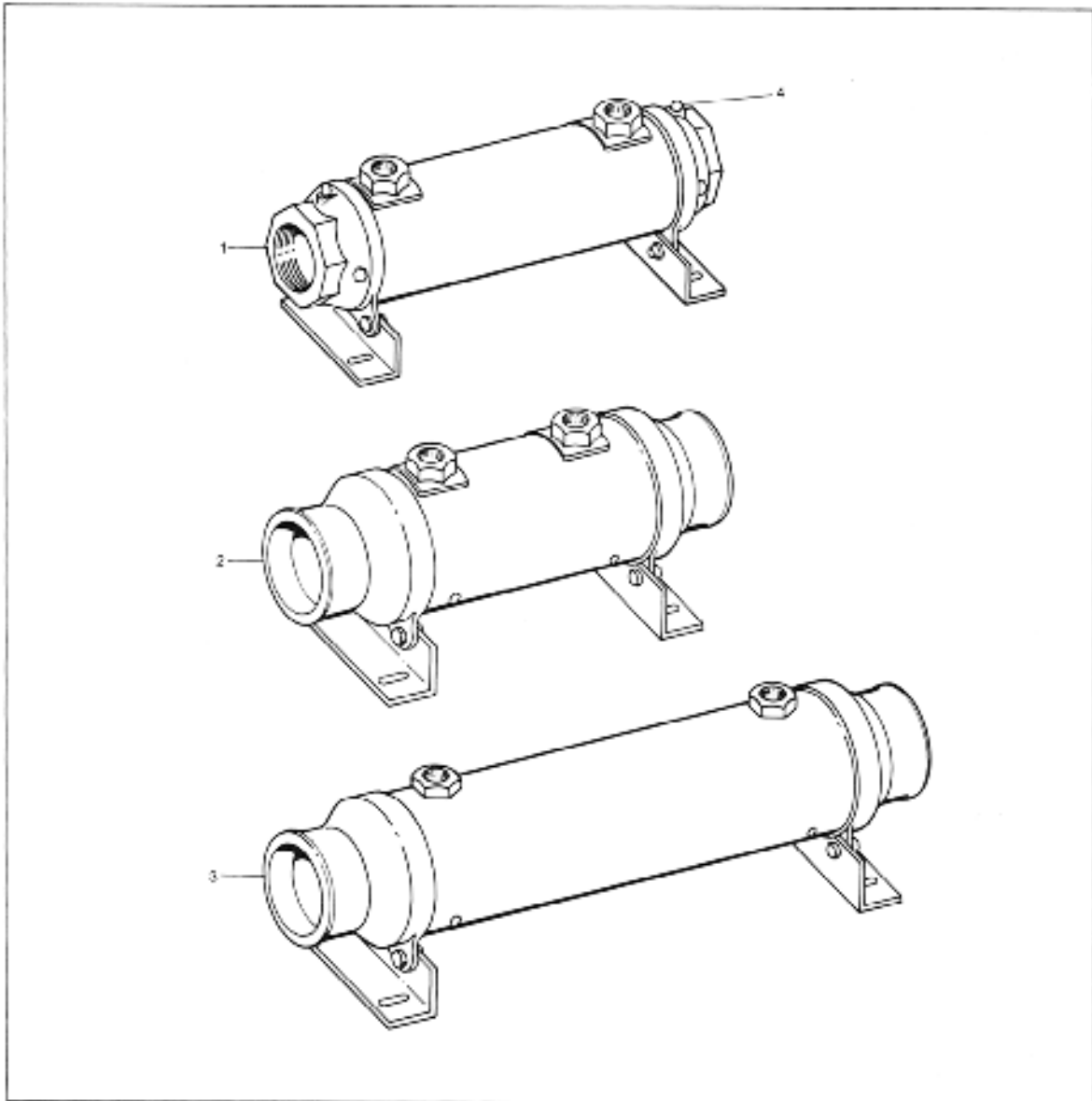


Fig. 59. Oil Coolers

ITEM	DESCRIPTION	PART NUMBER	QTY
OIL COOLERS			
1	SEA WATER COOLER 1. (17" X 5 1/8 dia.)	1-13769-0000	1
2	FRESH WATER COOLER (19 1/2" X 6 1/8" dia.)	1-13795-0000	1
3	FRESH WATER COOLER (30 3/4" X 6 1/8" dia.)	1-13814-0000	1
4	ZINC PENCILS	1-12445-0400	2

8.17 HOSE AND FITTING KIT

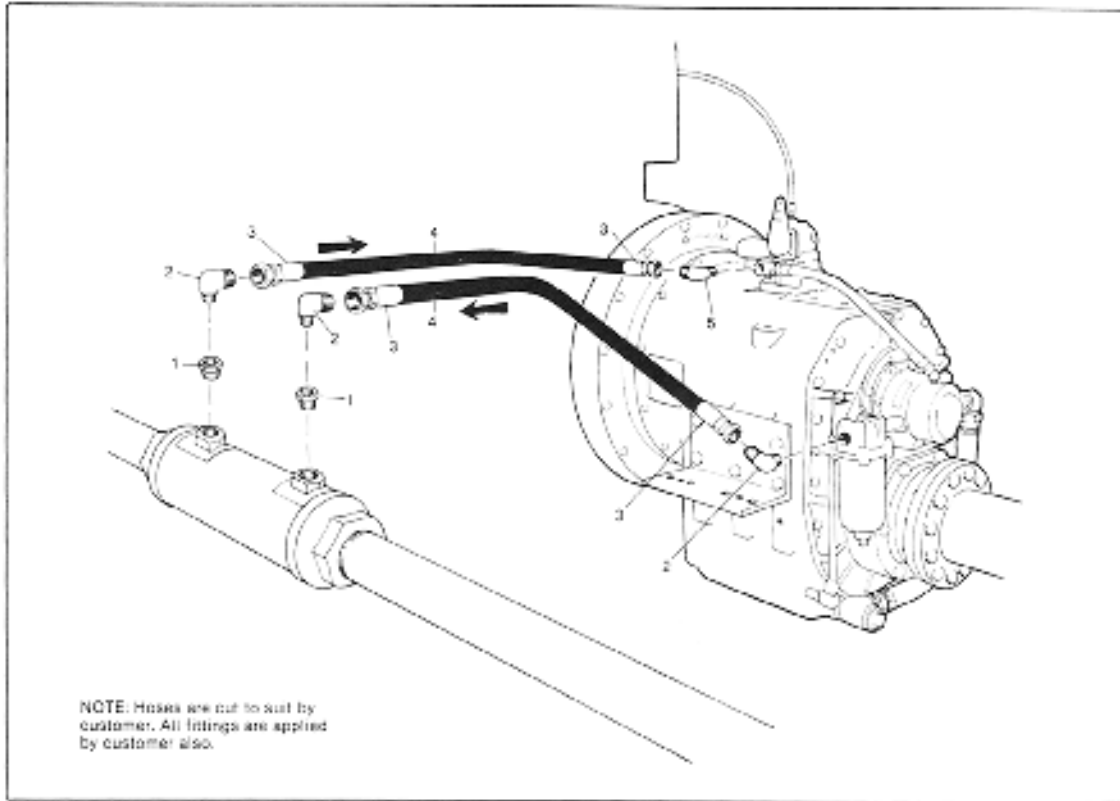


Figure 60. Hose and Fitting Kit (oil cooler not included in kit)

Hose and fitting kit no. 1-13960-0000 is available for use with the oil coolers listed on page 62.

ITEM	DESCRIPTION	PART NUMBER	QTY
REFERENCE	HOSE AND FITTING KIT	1-13960-0000	1
1	BUSHING 1" X 3/4"	1-11253-1200	2
2	90 DEG. ELBOW (JIC)	1-11221-1800	3
3	FEMALE FITTING	1-11282-0700	4
4	HOSE 5/8" I.D X 12 FT	1-11835-0000	1
5	MALE ELBOW, 45 DEG.	1-11220-1700	1

8.18 OIL FILTER

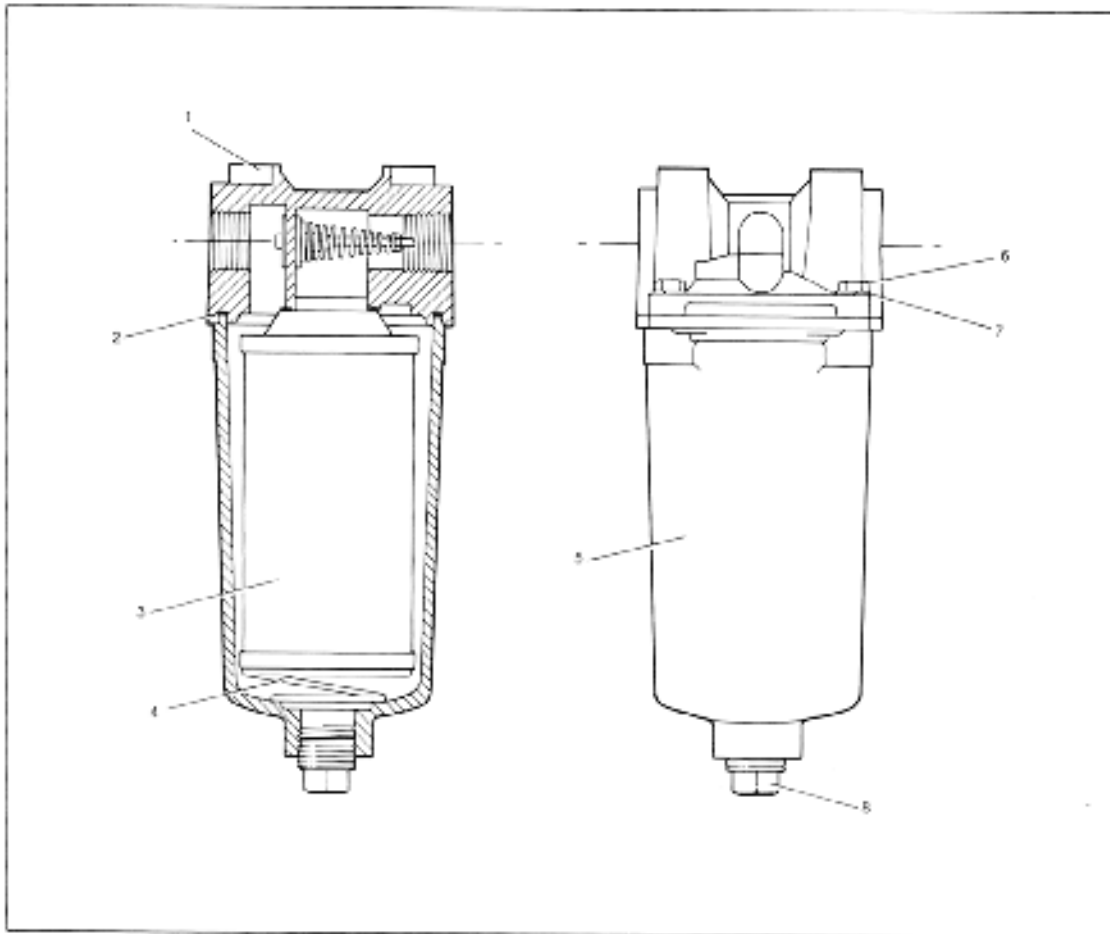
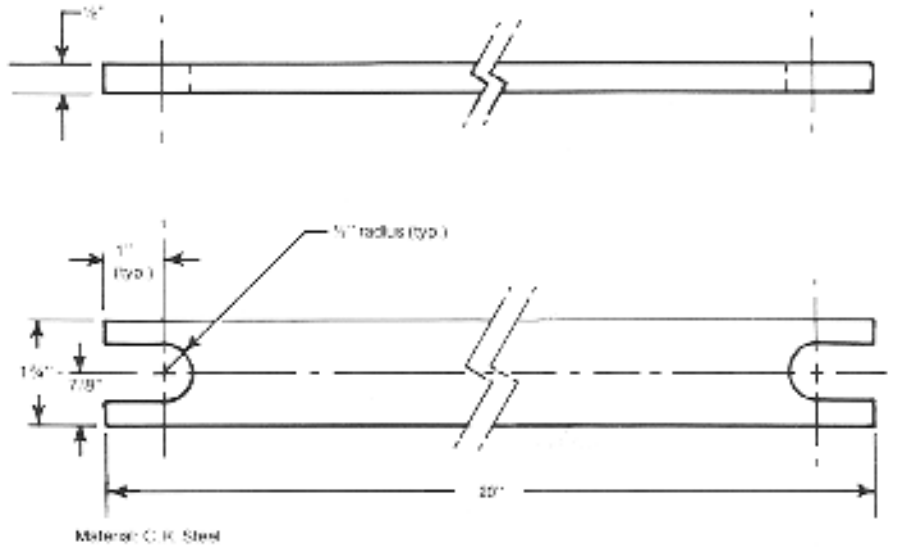


Fig. 61. Oil Filter No. 1-13811-0000

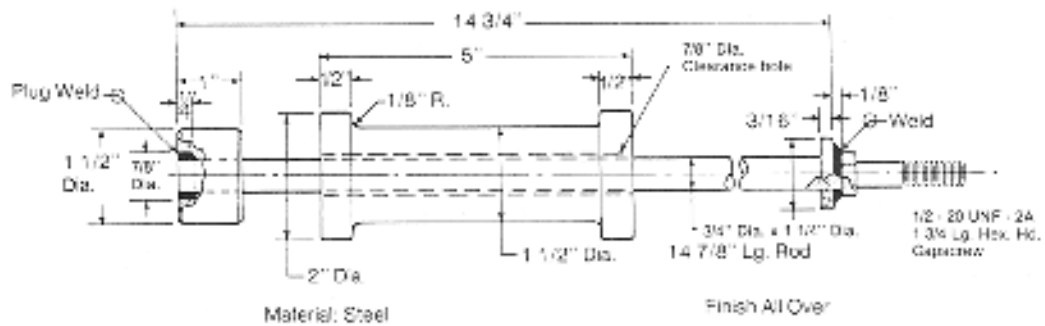
ITEM	DESCRIPTION	PART NUMBER	QTY
REF.	ASSEMBLY, OIL FILTER	1-13811-0000	1
1	HEAD	1-13811-0100	1
2	SEAL, HOUSING	1-13811-0500	1
3	ASSEMBLY, ELEMENT (INC. ELEMENT SEAL.)	1-13811-0300	1
4	SPRING, ELEMENT	1-13811-0600	1
5	HOUSING	1-13811-0200	1
6	CAPSCREW, HEX HEAD	1-12339-0000	4
7	LOCKWASHER	1-09458-0800	4
8	PLUG, DRAIN	1-11251-0500	1

SECTION 9. SPECIAL TOOLS

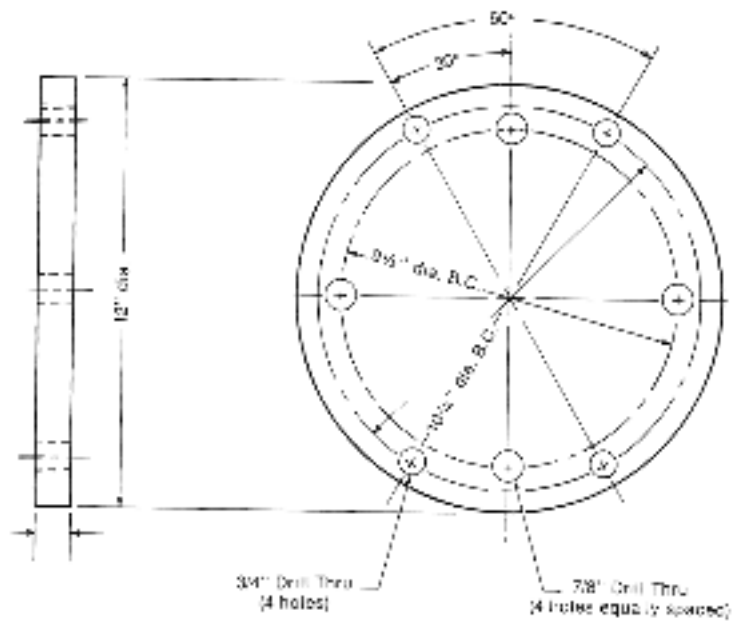
Special tools that may be used in repair work for HP-9400 and HP-10500. Transmissions are shown on the following pages. All pertinent information for fabrication is included. These tools are not normally available from Capitol Gears, Inc.



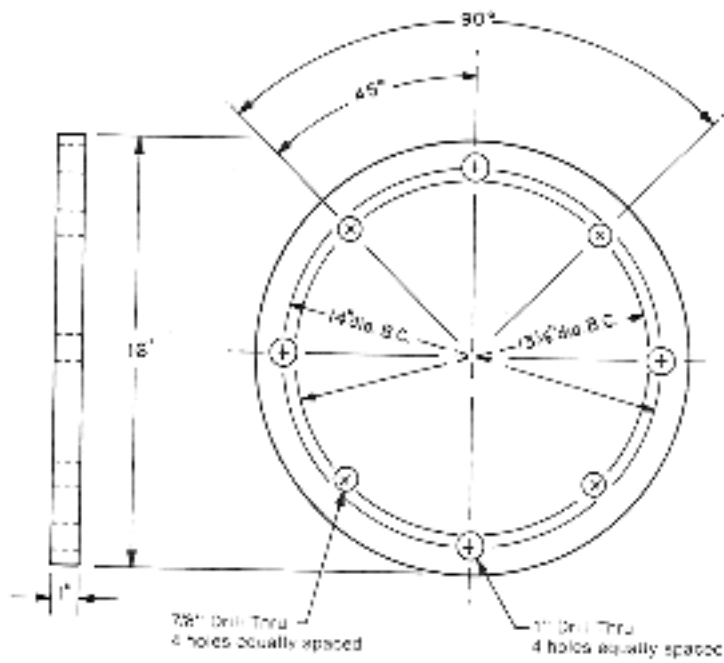
Haist Guide
Special Tool no. 1-90021-0000



Pinion Shell Knockout Puller
for HP clutches
Special Tool no. 1-90022-0000



HP - 9400
 Puller Plate for Output Coupling and Cover
 Special Tool no. 1-90018-0000



Material: C. P. Steel

HP - 10500
 Puller Plate for Output Coupling and Cover
 Special Tool no. 1-90023-0000