

## SECTION 8 PARTS INFORMATION

### 8.1 PARTS ORDERING PROCEDURE

A. Contact your local dealer, distributor or authorized service center.

B. Contact Capitol Gears Inc. If the above cannot supply the part(s) you need. Write:

Customer Service      Cable address:  
 Capitol Gears Inc.      "Cap marine"  
 349 North Hamline ave. tel: (612) 645-9491  
 St. Paul MN 55104      Telex: 29-7081  
 USA

C. Always give complete part description as shown in the sample column below:

Necessary Information	Sample
1. Model	HY-24000
2. Option Code	2-24000-02011-3011
3. Serial #	11300-1081
4. Ratio	1.53 A.E.R
5. Eng.mfg.No (if any)	
6. Part number	1-00230-4400
7. Description	clutch disc driving
8. Fig. # and item #	Fig. 57 item 6
9. Quantity being ordered	10

**NOTE:**

Please do not use the terms set or complete when ordering parts but specify exactly each part required

A list of distributors for capitol gear equipment may be obtained by writing to the Customer Service Department at the address mentioned above.

Do not send any equipment to the factory without authorization from the Customer Service department.

Capitol Gears will route parts with customers' best interest in mind if routing is not specified when ordering.

Capitol Gears inc. Will provide its distributors, dealers and service centers with current changes and additions to service literature. Contact your local capitol representative for up to date service material.

**CAPITOL GASKET AND SEAL KIT NO. 1-10193-0000** includes the necessary gaskets, seals and o-rings commonly used for repair.

Clutch quad-rings must be purchased separately.

### 8.2 UNIT RECORD

"CAPITOL" Marine Gear  
 Model \_\_\_\_\_  
 Serial no. \_\_\_\_\_  
 Installed in (name of vessel) \_\_\_\_\_  
 Installed by \_\_\_\_\_ date \_\_\_\_\_  
 Address \_\_\_\_\_  
 For use with (engine and model type) \_\_\_\_\_  
 Type of Service \_\_\_\_\_  
 Purchased from (Dealer's name and address) \_\_\_\_\_  
 \_\_\_\_\_  
 Date Purchased \_\_\_\_\_

### 8.3 OIL PUMP

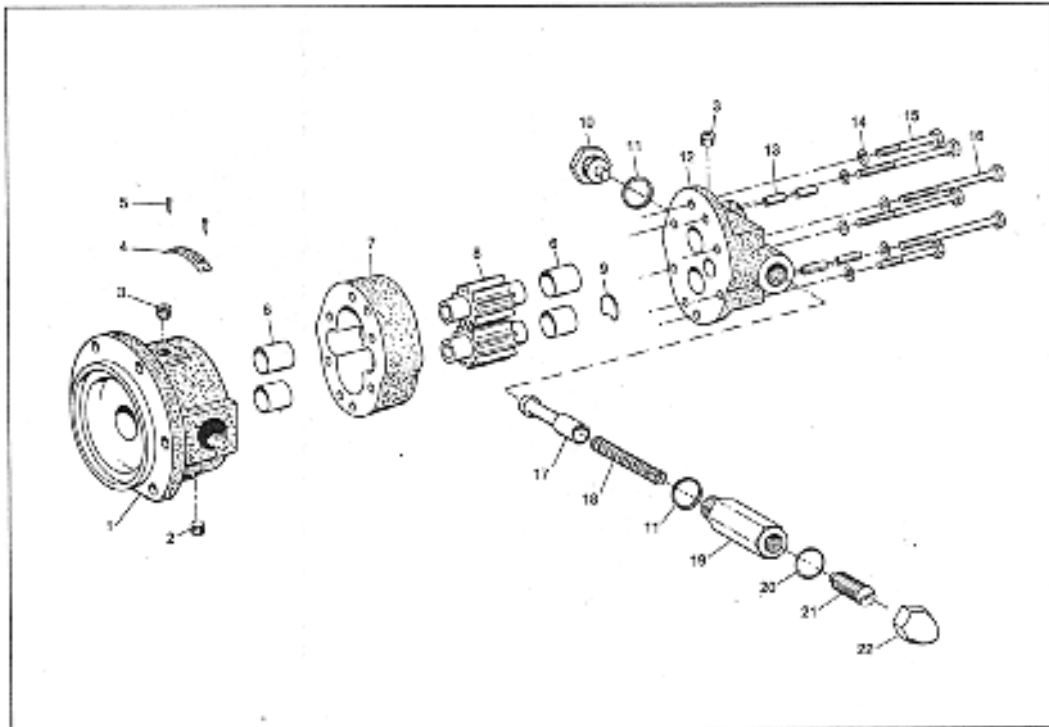


Figure 54. Oil Pump Assembly no. 1-13730-0000 (Right or Left Hand)

ITEM	DESCRIPTION	PART NO	QTY
REF	ASSEMBLY, OIL PUMP (RIGHT OR LEFT)	1-13730-0000	1
1	ASSEMBLY, PUMP ADAPTER (INCLUDES ITEMS 2,3,4,5,6)	1-13525-1000	1
2	PIPE PLUG, HEX SOCKET; 1/8 N.P.T	1-11279-0200	1
3	PIPE PLUG, HEX SOCKET; 1/4-18	1-11279-0300	2
4	PLATE PUMP NUMBER	1-11209-0000	1
5	DRIVE SCREW, ROUND HEAD	1-13275-0000	2
6	BUSHING	1-11125-0000	4
7	BODY, PUMP	1-13531-0000	2
8	GEAR, PUMP	1-13530-0000	2
9	DISC, FLAT	1-13731-0000	1
10	STOP, RELIEF	1-10285-0100	1
11	WASHER	1-10288-0700	2
12	ASSEMBLY, PUMP COVER (INCLUDES ITEMS 6,9,3)*	1-13721-1000	1
13	SPRING PIN	1-12097-2000	4
14	LOCKWASHER	1-05309-0800	6
15	CAPSCREW, HEX HD; 1/4-20 X 21/2	1-13543-0000	2
16	CAPSCREW HEX HD; 1/4-20 X 33/4	1-13544-0000	4
17	PLUNGER RELIEF	1-10258-1000	1
18	SPRING, PRESSURE RELIEF	1-13413-0000	1
19	INSERT, RELIEF VALVE	1-13412-0000	1
20	WASHER	1-12902-0000	1
21	SCREW, PRESSURE RELIEF	1-06660-0800	1
22	NUT, DOME	1-06667-0800	1

\*Bushings are installed and reamed to size

**8.4 SELECTOR VALVE**

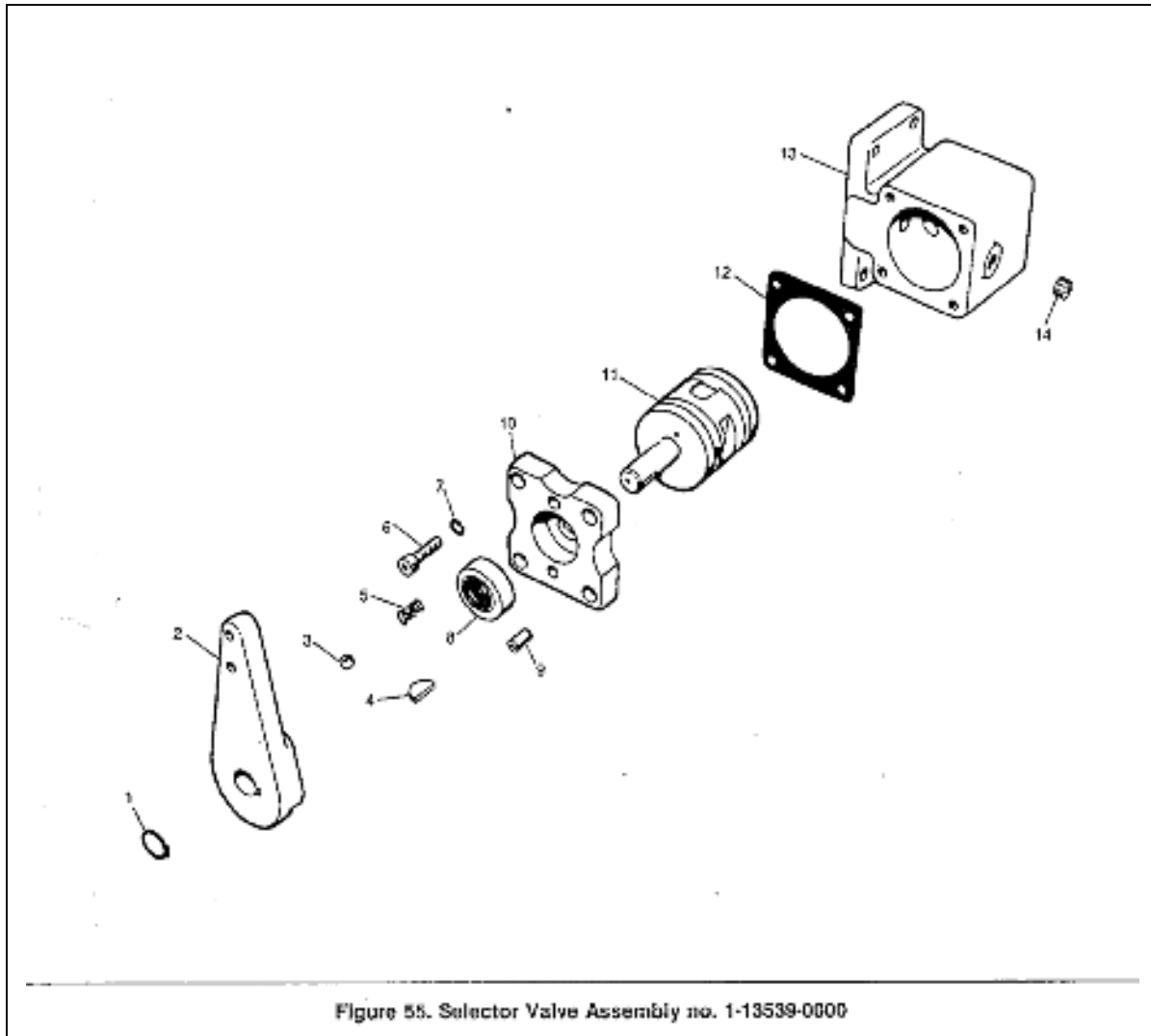


Figure 55. Selector Valve Assembly no. 1-13539-0000

ITEM	DESCRIPTION	PART NO.	QTY
REF	ASSEMBLY, SELECTOR VALVE	1-13539-0000	1
1	SNAP RING	1-01180-1500	1
2	LEVER, SELECTOR VALVE	1-12419-0000	1
3	BALL, INDEXING	1-11200-0000	1
4	KEY, WOODRUFF	1-01164-3200	1
5	SPRING, INDEXING	1-01132-1500	1
6	CAPSCREW, SOCKET HD; 10-24 X 1/2	1-12844-0000	4
7	LOCKWASHER, LIGHT	1-01160-1500	4
8	OIL SEAL	1-01155-1500	1
9	SPRING PIN	1-12097-0800	1
10	COVER, VALVE	1-12417-1000	1
11	VALVE, ROTARY CONTROL (ROTOR)	1-01144-1500	1
12	GASKET, VALVE COVER	1-01156-1500	1
13	BLOCK VALVE	1-13532-0000	1
14	PIPE PLUG, HEX SOCKET	1-11279-0200	1

**8.5 ADAPTER  
PARTS**

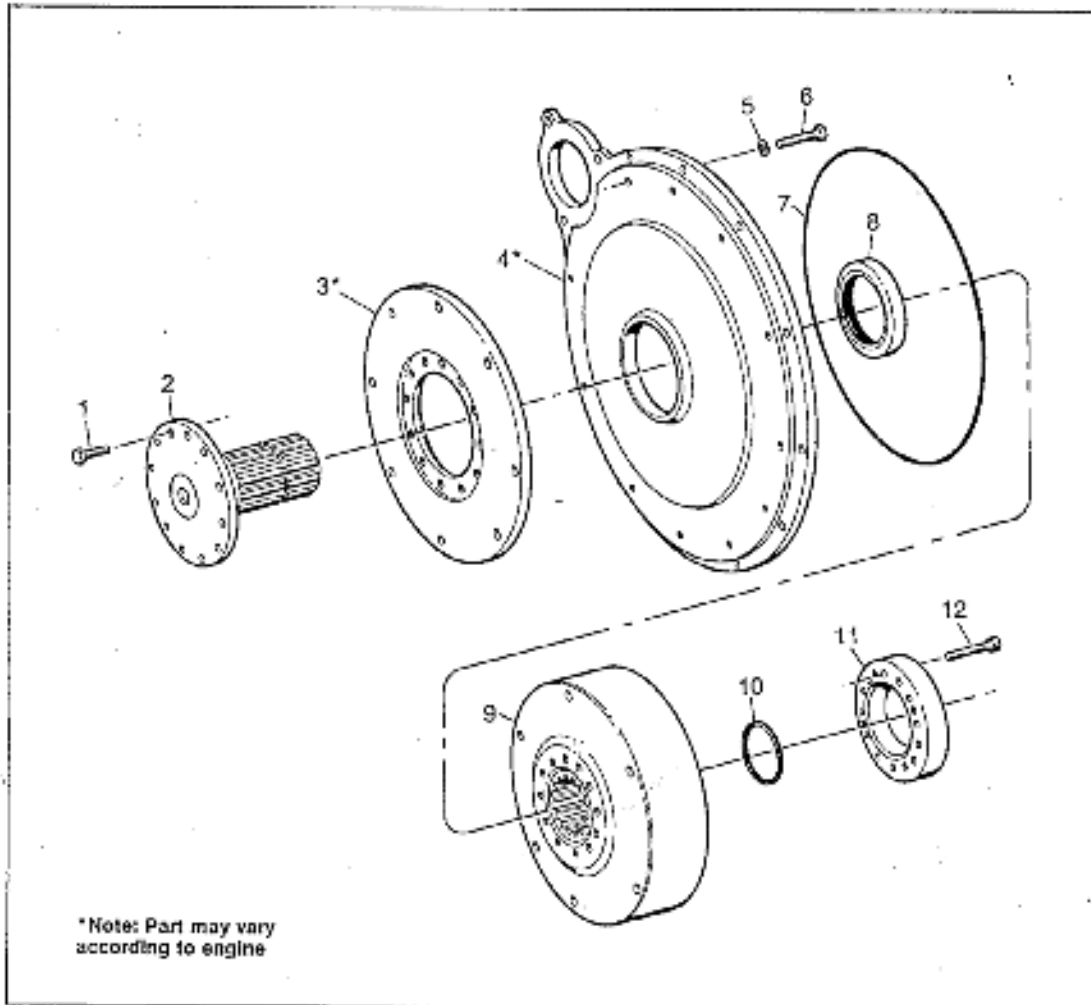


Figure 56. Adapter Parts

ITEM	DESCRIPTION	PART NO.	QTY
1	CAPSCREW, SELF-LOCKING 1/2-13 N.C 1"	1-13805-0000	12
2	ASSEMBLY, DRIVE FLANGE (INCLUDES PIPE PLUG AND SPACER)	1-13710-0000	1
3	ADAPTER FLYWHEEL; SEE DRAWING		
4	ADAPTER, OIL DAM; SEE DRAWING		
5	LOCKWASHER, LIGH 3/8	1-09460-0800	12
6	CAPSCREW, HEX. HD; 3/8-16 N.C 1 1/2	1-07926-0800	12
7	O-RING	1-13499-0000	1
8	OIL SEAL	1-12970-0000	1
9	DRUM, CLUTCH DRIVING	1-13501-2000	1
10	SNAP RING	1-1151-3700	1
11	LOCKING RING, DRUM	1-13849-0000	1
12	CAPSCREW, SELF LOCKING SOCKET HD 3/8-16 X 1 3/4"	1-11405-0000	12

## 8.6 CLUTCH

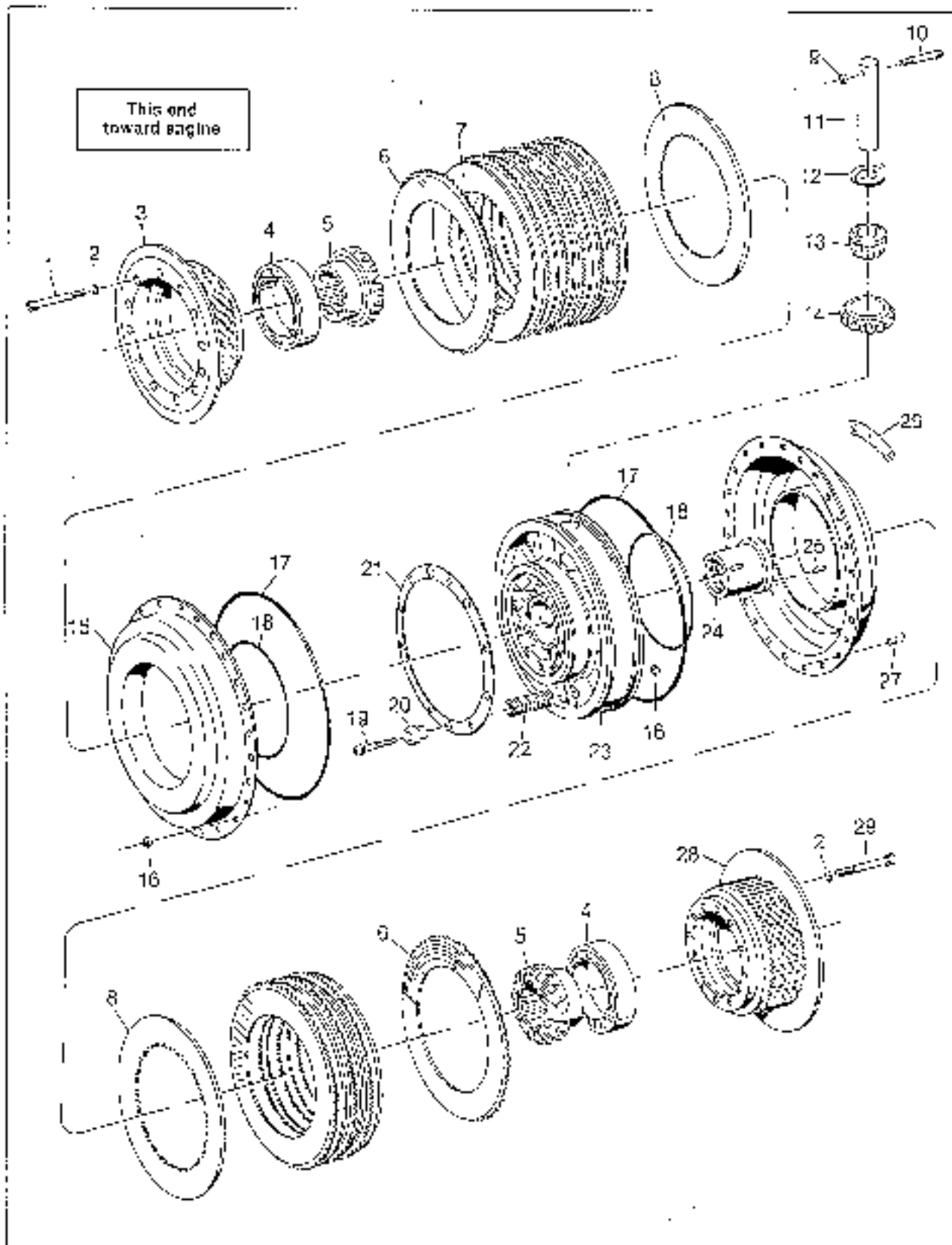


Figure 57. Clutch Assembly no. 1-30100-5004

## 8.6 CLTUCH

ITEM	DESCRIPTION	PART NO.	QTY
REF	ASSEMBLY CLUTCH	1-00100-5004	1
1	CAPSCREW, SOCKET HD 3/8-16 X 3 1/4"	1-12247-0000	12
2	LOCKWASHER; 3/8"	1-08755-0800	24
3	END FLANGE, FORWARD CLUTCH	1-00212-5000	1
4	BALL BEARING	1-00211-2500	2
5	GEAR BEVEL (DRIVING AND DRIVEN)	1-00215-2600	2
6	CLUTCH DISC, DRIVING	1-00230-4400	10
7	CLUTCH DISC, DRIVEN	1-00233-1200	5
8	CLUTCH DISC, DRIVEN (THICK)	1-00233-2900	5
9	NUT, SELF LOCKING	1-00226-3600	3
10	CAPSCREW, SOCKET HD; 1/4-28 X 2"	1-09433-0800	3
11	SHAFT, BEVEL PINION	1-00220-3600	3
12	WASHER, THRUST	1-00221-3600	3
13	BEARING, BEVEL PINION	1-00218-2500	3
14	PINION, BEVEL	1-00217-3100	3
15	CYLINDER, CLUTCH (FORWARD AND REVERSE)	1-00234-5500	2
16	NUT, SELF LOCKING	1-11399-0000	36
17	QUAD RING	1-00237-3600	2
18	QUAD RING	1-00238-5800	2
19	CAPSCREW, SOCKET HD; 5/16-18 X 2"	1-05386-0800	12
20	RETAINER, RETURN SPRING	1-00243-3600	12
21	RING, RETURN SPRING	1-13917-0000	1
22	SPRING, RETURN	1-00239-3700	12
23	CARRIER, BEVEL GEAR (DOES NOT INCLUDE BEVEL PINION OR RETURN SPRING ASSEMBLY)	1-00219-3700	1
24	BUSHING, FORWARD COMMUTATOR	1-00247-3600	1
25	SPRING PIN; 3/16 DIA. X 5/8"	1-12096-1000	3
26	NAME PLATE	1-12398-0000	1
27	CAPSCREW, SOCKET HD; 5/16-18 X 5/8"	1-09468-0800	24
28	END FLANGE	1-00210-5000	1
29	CAPSCREW, SOCKET HD; 3/8-16X 3"	1-08746-0800	12

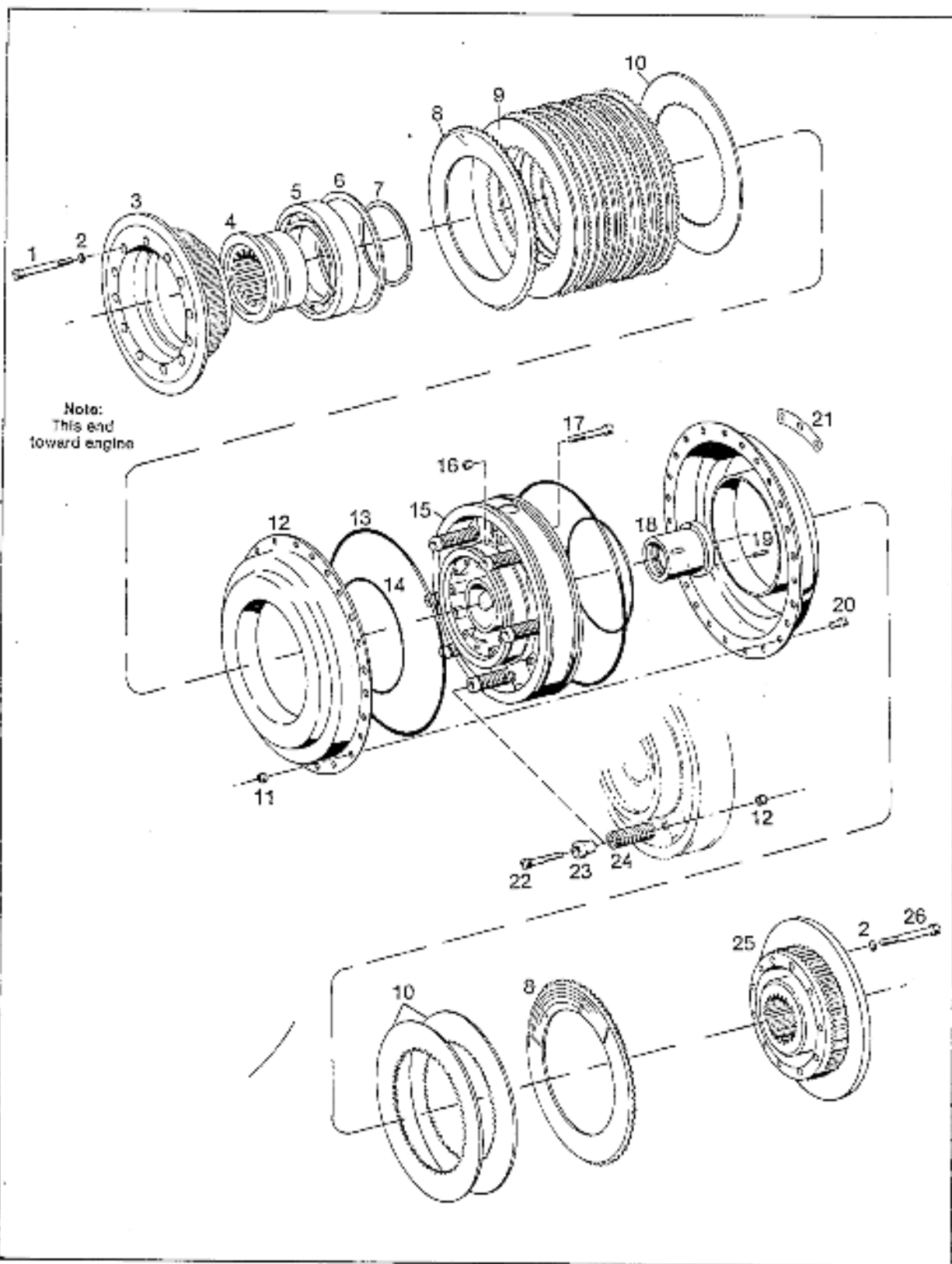


Figure 58. No. 1-00100-3900 Clutch Assembly

**8.6 CLUTCH**  
**Cont'd**

ITEM	DESCRIPTION	PART NO.	QTY
REF	CLUTCH, ASSEMBLY HY-PTO WITH BRAKE	1-00100-3900	1
1	CAPSCREW, SOCKET HD, 3/8-16 X 3/1/4"	1-12247-0000	12
2	LOCKWASHER	1-08755-0800	24
3	FLANGE, FORWARD CLUTCH	1-00212-3300	1
4	SUPPORT CLUTCH	1-13264-0000	1
5	BEARING BALL	1-00211-2500	1
6	SNAP RING, SPIROLOX	1-13266-0000	1
7	SNAP RING, TRU-ARC	1-11834-0000	1
8	CLUTCH DISC, DRIVING	1-00230-4400	7
9	CLUTCH DISC, DRIVEN	1-00233-1200	5
10	CLUTCH DISC, DRIVEN (THICK)	1-00233-2900	3
11	NUT, SELF LOCKING, 5/16-18 N.C	1-11399-0000	36
12	CYLINDER CLUTCH	1-00234-5500	2
13	QUAD RING	1-00237-3600	2
14	QUAD RING	1-00238-5800	2
15	CARRIER, BEVEL GEAR	1-00219-3700	1
16	NUT SELF LOCKING 1/4-28 N.F	1-00226-3600	3
17	CAPSCREW, SOCKET HD. 1/4-28 X 2"	1-09433-0800	3
18	BUSHING FORWARD COMMUTATOR	1-00247-3600	1
19	SPRING PIN, 3/16 DIA. 5/8"	1-12096-1000	3
20	CAPSCREW, SOCKET HD, 5/16-18 X 5/8"	1-09468-0800	24
21	NAME PLATE	1-12398-0000	1
22	CAPSCREW, SOCKET HD 5/16-18 X 2"	1-0836-0800	12
23	RETAINER, RETURN SPRING	1-00243-3600	12
24	SPRING RETURN	1-00239-3700	12
25	FLANGE, REVERSE CLUTCH	1-13092-2000	1
26	CAPSCREW, SOCKET HD 3/8-16 X 3"	1-08746-0800	12



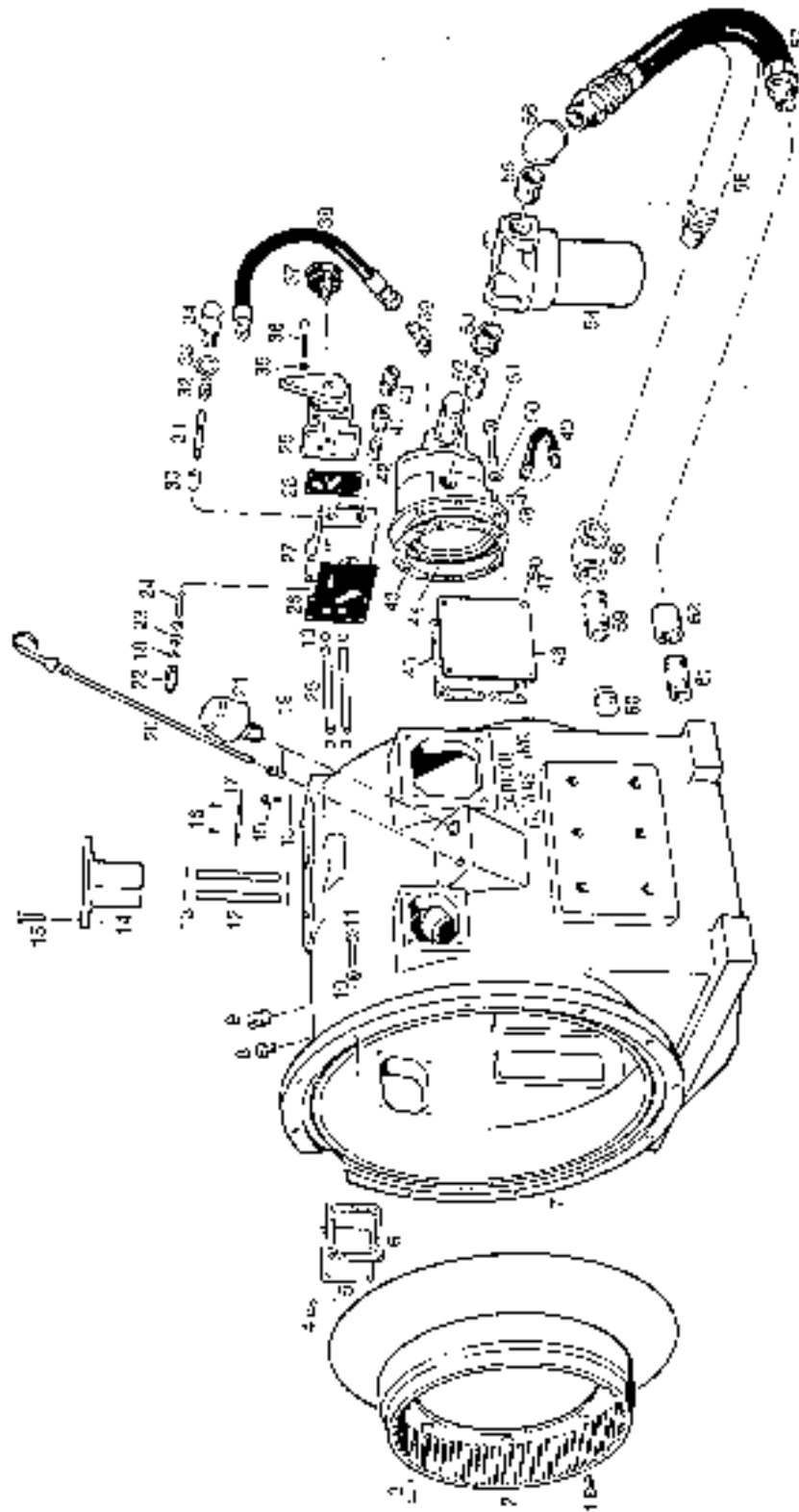


Figure 50. HY-24000 Transmission Housing and Related Parts.

## 8.7 TRANSMISSION HOUSING AND RELATED PARTS

ITEM	DESCRIPTION	PART NO.	QTY
1	CAPSCREW , FLAT SOCKET HD ½-13 N.C 1"	1-09741-0800	8
2	DRUM, REVERSE CLUTCH	1-13500-0000	1
3	DOWEL PIN ½ DIA. X ¾ LG	1-13077-0000	2
4	CAPSCREW, HEX HD. ¼-20 N.C ½	1-08087-0800	8
5	COVER	1-01103-1500	2
6	GASKET	1-01131-1500	2
7	HOUSING & COVER ASS'Y (HOUSING NOT SOLD SEPERATELY)		
	FOR MODELS WITHOUT IDLER GEAR AER	1-13490-0000	1
	FOR 1.00 RATIO MODELS WITH IDLER E.R	1-13490-1000	1
	FOR 1.53 RATIO MODELS WITH IDLER E.R	1-13490-2000	1
	FOR 2.04 RATIO MODELS WITH IDLER E.R	1-13490-3000	1
8	CAPSCREW HEX HD; ¼-20 N.F X ¾"	1-11649-0000	1
9	PIPE PLUG, SQUARE HD.	1-11251-0500	1
10	LOCKWASHER, 3/8" LIGHT	1-09460-0800	12
11	CAPSCREW, HEX HD. 3/8-16 N.C X 1 1/2	1-07926-0800	12
12	TUBE, COMMUTATOR	1-13535-0000	2
13	O-RING	1-13076-0000	8
14	JUNCTION BLOCK	1-13513-0000	1
15	CAPSCREW, HEX HD. 5/16 N.C X 7/8"	1-12151-0000	5
16	DRIVE SCREW	1-13275-0000	2
17	NAME PLATE	1-11210-0000	1
18	WASHER, FLAT	1-09471-0800	3
19	STANDARD NUT, INVERTED FLARE	1-11227-0400	1
20	DIPSTICK	1-13495-0000	1
21	BREATHER	1-13511-0000	1
22	DOME NUT	1-09461-0800	1
23	JAM NUT, HEX; 5/16-18 N.C	1-09464-0800	1
24	SCREW, SOCKET SET; 5/16-18 X 1 1/2"	1-09466-0800	1
25	TUBE, SELECTOR VALVE	1-13534-0000	2
26	GASKET, BASE PLATE	1-13619-0000	1
27	BASE PLATE	1-13618-1000	1
28	GASKET, SELECTOR VALVE	1-13627-0000	1
29	SELECTOR VALVE (SEE P.42)	1-13539-0000	1
30	PLUNGER	1-12616-0000	1
31	SPRING	1-12618-0000	1
32	WASHER	1-12619-0000	5
33	WASHER	1-10288-0700	1
34	END CAP	1-12617-0000	1
35	LOCKWASHER ¼" LIGHT	1-05309-0800	1
36	CAPSCREW, HEX HD.; ¼-20 N.C X 2 1/4"	1-12377-0000	1
37	PRESSURE GAUGE	1-09669-09 00	1
38	HOSE	1-07830-1500	1
39	PIPE ELBOW, 90°; 3/8 N.P ¾-16	1-11221-1100	1
40	MALE CONNECTOR; 3/8 N.P X ¾-16	1-11241-1200	1
41	TEE; ½ X 3/8 X 3/8"	1-11260-0200	1
42	CLOSE NIPPLE; 3/8" N.P.T X 1" L.G	1-11233-0300	1
43	GASKET, BEARING RETAINER	1-13541-0000	1
44	OIL PUMP (SEE P.41)	1-13730-0000	1
45	GASKET	1-12438-0000	1

Cont'd

46	COVER	1-12405-0000	1
47	CAPSCREW, HEX HD; 3/8-16 N.C X 5/8"	1-10836-0000	8
48	90 ELBOW- E.R MODELS ONLY (WITH IDLER)	1-11221-0300	1
49	HOSE, IDLER- E.R MODELS ONLY (WITH IDLER)	1-13389-0000	1
50	LOCKWASHER; 1/2" LIGHT	1-11083-0000	6
51	CAPSCREW, HEX HD. 1/2-13 N.C X 2 1/4"	1-03734-0800	6
52	PIPE NIPPLE; 3/4 N.P.T X 2 1/2"	1-11259-0600	1
53	BUSHING; 1 X 3/4" N.P.T	1-11253-1200	1
54	OIL FILTER (SEE PG. 58)	1-13286-0000	1
55	CLOSE NIPPLE; 1" N.P.T X 1 1/2"	1-11233-0600	1
56	90 ELBOW; 1 X 1" N.P.T	1-11246-0600	1
57	HOSE SUCTION- A.E.R MODELS (NON-IDLER)	1-13475-0000	1
58	HOSE SUCTION – E.R MODELS (WITH IDLER)	1-13493-0000	1
59	PIPE NIPPLE; 1" N.P.T X 2 1/2"	1-11259-2700	1
60	PIPE PLUG, S.Q. H.D; 1" N.P.T	1-11251-0600	1
61	PIPE NIPPLE; 1" N.P.T X 2"	1-11259-0900	1
62	COUPLING; 1" N.P.T X 2"	1-11262-0600	1

**8.8 PINION SHAFT AND RELATED PARTS**

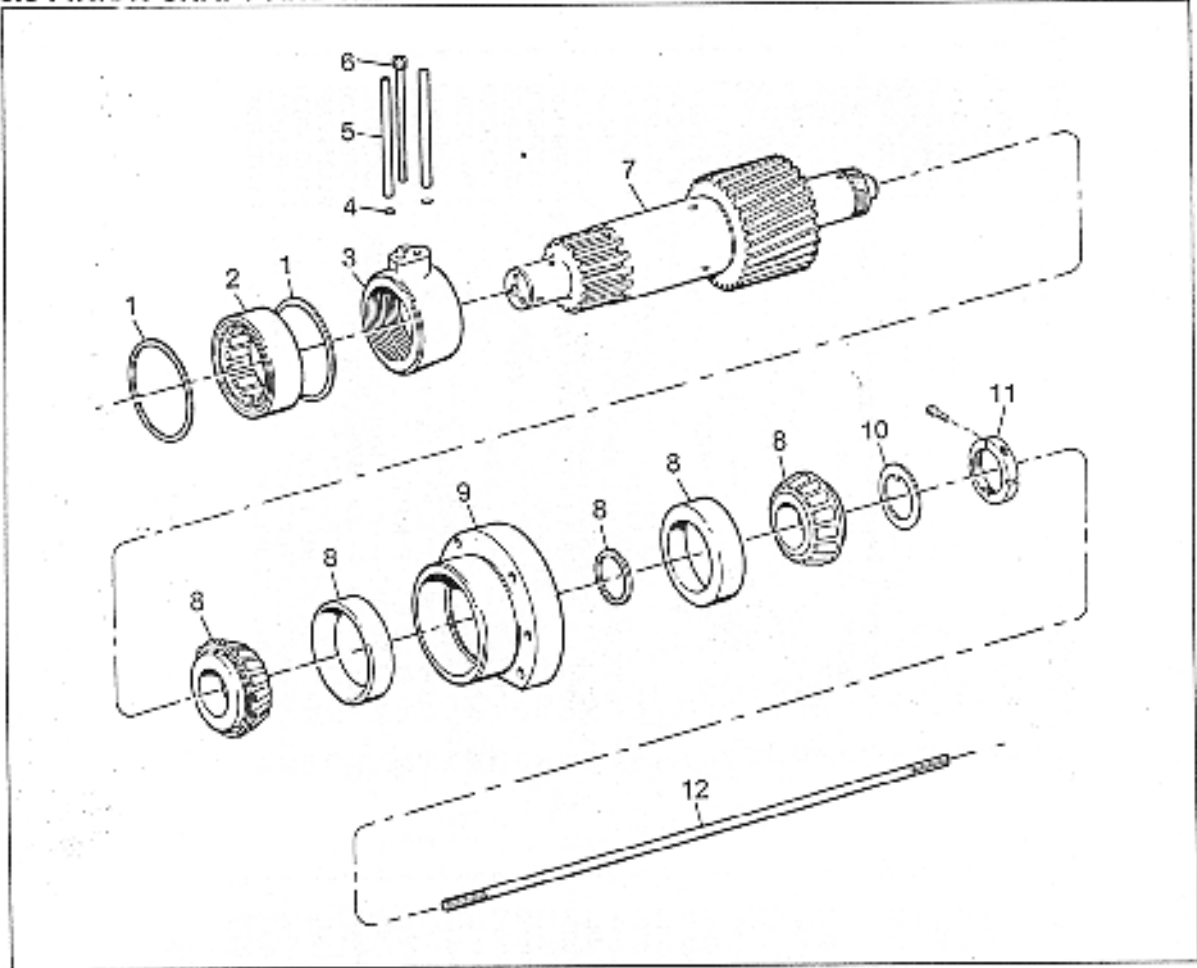


Figure 60. Pinion Shaft and Related Parts.

**8.9 IDLER GEAR AND RELATED PARTS**

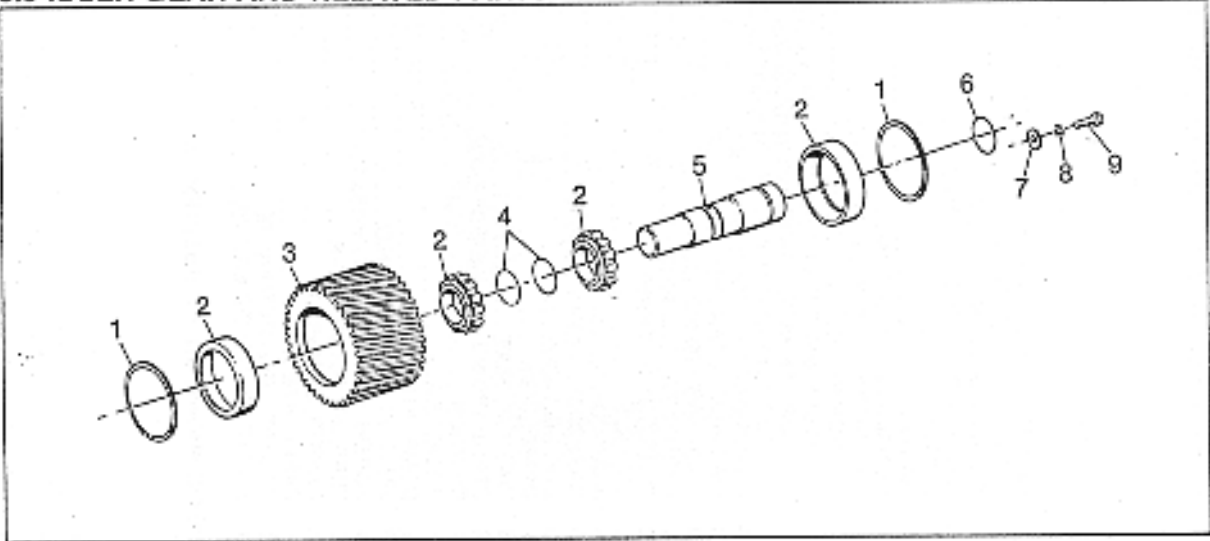


Figure 61. Idler Gear and Related Parts.

### 8.8 PINION SHAFT AND RELATED PARTS

ITEM	DESCRIPTION	PART NO	QTY
1	SNAP RING	1-13479-0000	2
2	BEARING	1-13507-0000	1
3	COMMUTATOR, REAR	1-13471-0000	1
4	O-RINGS	1-13076-0000	8
5	TUBES, COMMUTATOR	1-13535-0000	2
6	CAPSCREW, SOC. HD; 3/8-24 N.F. X 3" (SELF LOCKING)	1-13486-0000	1
7	ASSEMBLY, PINION SHAFT	SEE SELECTION CHART	1
8	ASSEMBLY, BEARING (5 PIECES)	1-12958-0000	1
9	ASSEMBLY, BEARING RETAINER	1-13504-1000	1
10	WASHER, KEYED	1-13987-0000	1
11	LOCKNUT, BEARING	1-13988-0000	1
12	SHAFT, OIL PUMP	1-13496-0000	1

#### PINION AND SHAFT REPAIR KITS

The following kits are available that include the pinion and shaft assembly, keyed washer, bearing locknut and a small tube of Loctite locking compound.

RATIO	KIT NUMBER
1.000 A.E.R	1-13518-2000
1.533 A.E.R.	1-13520-2000
2.040 A.E.R	1-13517-2000
1.000 E.R	1-13519-2000
1.535 E.R	1-13548-2000
2.043 E.R	1-13516-2000

### 8.9 IDLER GEAR AND RELATED PARTS

ITEM	DESCRIPTION	PART NO.	QTY
1	SNAP RING	1-10112-0000	2
2	BEARING	1-10117-0000	2
3	GEAR, IDLER	1-13522-0000	1
4	SNAP RING	1-12763-0000	2
5	SHAFT, IDLER	1-13528-0000	1
6	O-RING	1-10336-0000	1
7	WASHER, SPECIAL	1-10338-0000	1
8	LOCKWASHER, LIGHT 5/16"	1-09458-0800	1
9	CAPSCREW, HEX HD; 5/16-18 X 1/2"	1-12145-0000	1

#### PLUG KIT FOR CONVERTING IDLER MODEL (E.R) TO A NON-ILDER MODEL (A.E.R)

DESCRIPTION	PART NO.	QTY
PLUG, NON-IDLER	1-13836-0000	1
O-RING	1-10336-0000	1
CAPSCREW, HEX HD 5/16-18 X 1/2"	1-12145-0000	1
LOCKWASHER, LIGHT; 5/16"	1-09458-0800	1
WASHER, SPECIAL	1-10338-0000	1

## 8.10 OUTPUT GEAR AND RELATED PARTS

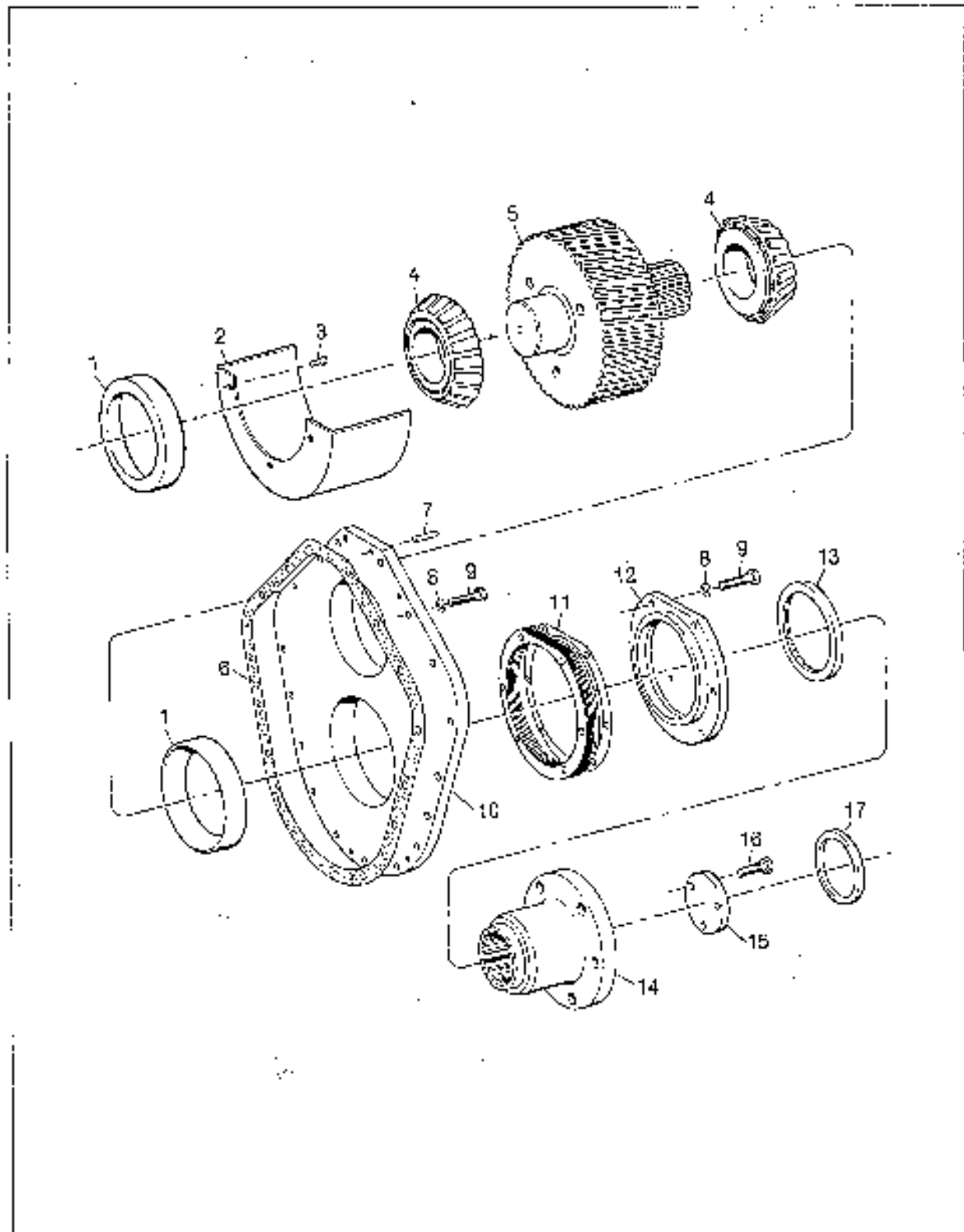


Figure 62. Output Gear and Related Parts.

## 8.10 OUTPUT GEAR AND RELATED PARTS

ITEM	DESCRIPTION	PART NO.	QTY
1	CUP BEARING	1-11627-0200	2
2	OIL PAN	1-13527-0000	1
3	CAPSCREW, HEX HD; 3/8-16 N.C X 3/4" (SELF LOCKING)	1-13768-0000	3
4	CONE, BEARING	1-11627-0100	2
*5	GEAR OUTPUT	SEE SELECTION CHART	
6	GASKET, COVER TO HOUSING	1-13542-0000	1
7	DOWEL PIN; 1/2 DIA. 1 1/4 L.G	1-12311-0000	2
8	LOCKWASHER, LIGHT; 1/2	1-11083-0000	23
9	CAPSCREW, HEX HD; 1/2 -13 N.C X 11/2	1-09141-0800	23
10	COVER & HOUSING ** ASS'Y (COVER NOT SOLD SEPERATELY)		
	FOR MODELS WITHOUT IDLER GEAR (AER)	1-13490-0000	1
	FOR MODELS WITH IDLER (ER) 1.00 RATIO	1-13490-1000	1
	FOR MODELS WITH IDLER (ER) 1.53 RATIO	1-13490-2000	1
	FOR MODELS WITH IDLER (E,R) 2.04 RATIO	1-13490-3000	1
11	SHIM PACK (7 PIECES)	1-13540-0000	1
12	OIL SEAL REATINER AND BEARING CUP	1-13503-0000	1
13	OIL SEAL	1-13538-0000	1
14	COUPLING, OUTPUT	1-13512-1000	1
*15	PLATE, RETAINER	1-13862-0000	1
*16	CAPSCREW, HEX HD.; 1/2-13 N.C X 1 1/4" (SELF LOCKING)	1-13134-0000	3
17	PILOT RING	1-01175-0400	1

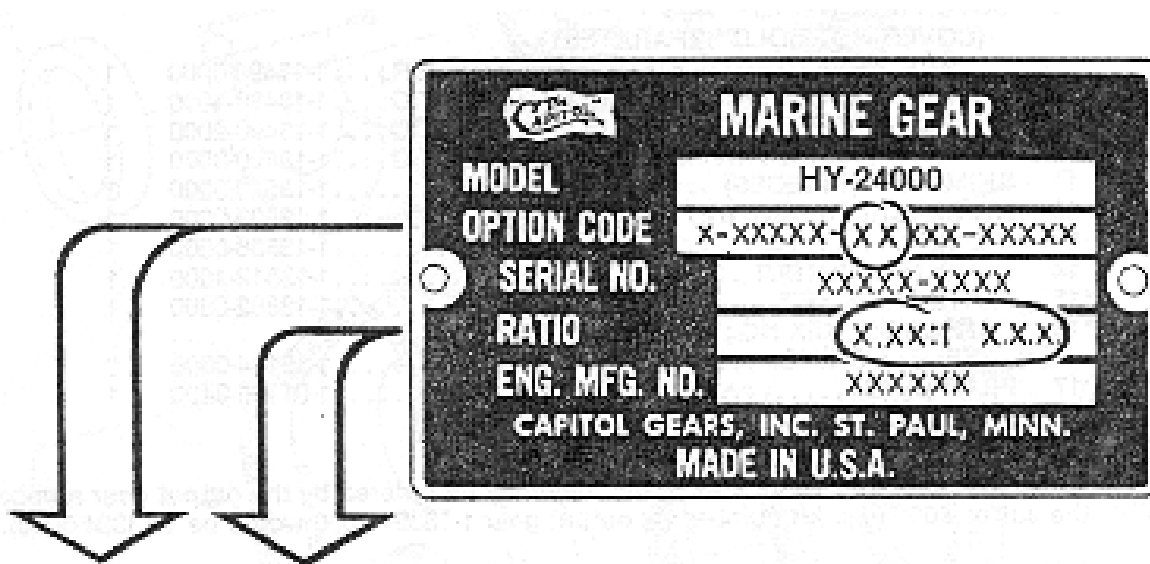
\* Starred items are available as a kit. They may be ordered by the output gear number plus the suffix -5000 (e.g. Kit number for output gear 1-13354-2000 would be 1-13354-5000).

\*\* Housing is shown in item 7

### 8.11 REDUCTION GAER SELECTION CHART

HOW TO SELECT THE CORRECT PINION AND OUTPUT GEAR FOR YOUR TRANSMISSION:

- A. LOCATE THE NAMEPLATE (ON TOP OF HOUSING) AND DETERMINE THE OPTION CODE NUMBERS (CIRCLED IN SAMPLE BELOW) AND THE RATIO. The NUMBER OF TEETH MAY BE CHECKED ALSO.
- B. MATCH THIS INFORMATION WITH THE CHART BELOW TO DETERMINE THE CORRECT PART NUMBER (S).



OPTION CODE	RATIO	PART NAME	NO. OF TEETH	PART NUMBER
01	1.000 A.E.R.	PINION	38	1-13518-0000
		GEAR	38	1-13354-2000
02	1.533 A.E.R.	PINION	30	1-13520-0000
		GEAR	46	1-13356-2000
03	2.040 A.E.R.	PINION	25	1-13517-0000
		GEAR	51	1-13506-2000
04	1.000 E.R.	PINION	34	1-13519-0000
		GEAR	34	1-13355-2000
05	1.535 E.R.	PINION	28	1-13548-0000
		GEAR	43	1-13357-2000
06	2.043 E.R.	PINION	23	1-13516-0000
		GEAR	47	1-13505-2000



## 8.12 PROP COUPLING AND KEYED SHAFT KITS

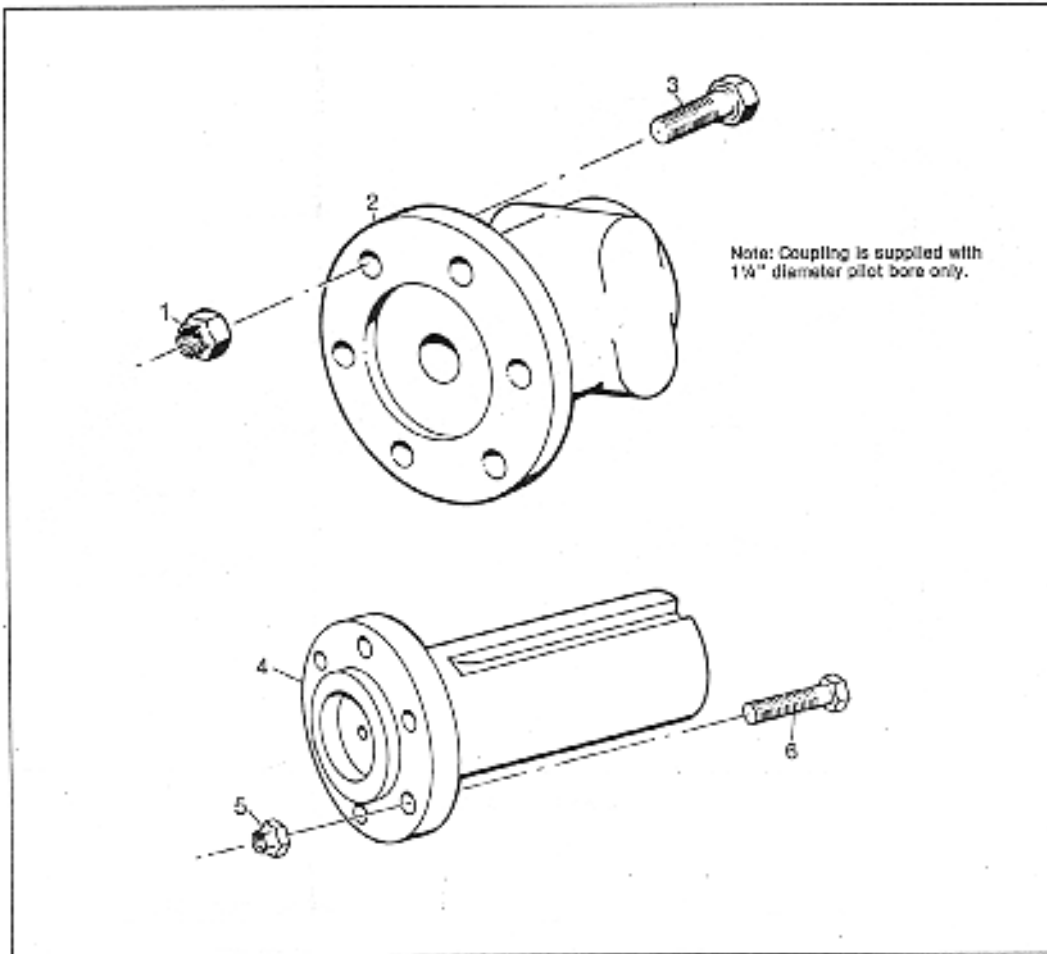


Figure 63. Propeller Flange Coupling and Keyed Shaft Kits.

ITEM	DESCRIPTION	PART NO.	QTY
REF	PROP COUPLING KIT	1-13578-0000	11
1	NUT, SELF LOCKING 5/8-11	1-13304-0000	6
2	COUPLING, SHA	1-13494-0000	1
3	CAPSCREW, HEX HEAD; 5/8 X 2"	1-07554-0800	6
REF	KEYED SHAFT KIT (13 PCS.)	1-13846-0000	1
4	COUPLING, KEYED SHAFT	1-13238-0000	1
5	CAPSCREW, HEX HEAD; 5/8-11 X 2"	1-07554-0800	6
6	NUT, SELF-LOCKING; 5/8-11	1-13304-0000	6

### 8.13 OIL COOLERS

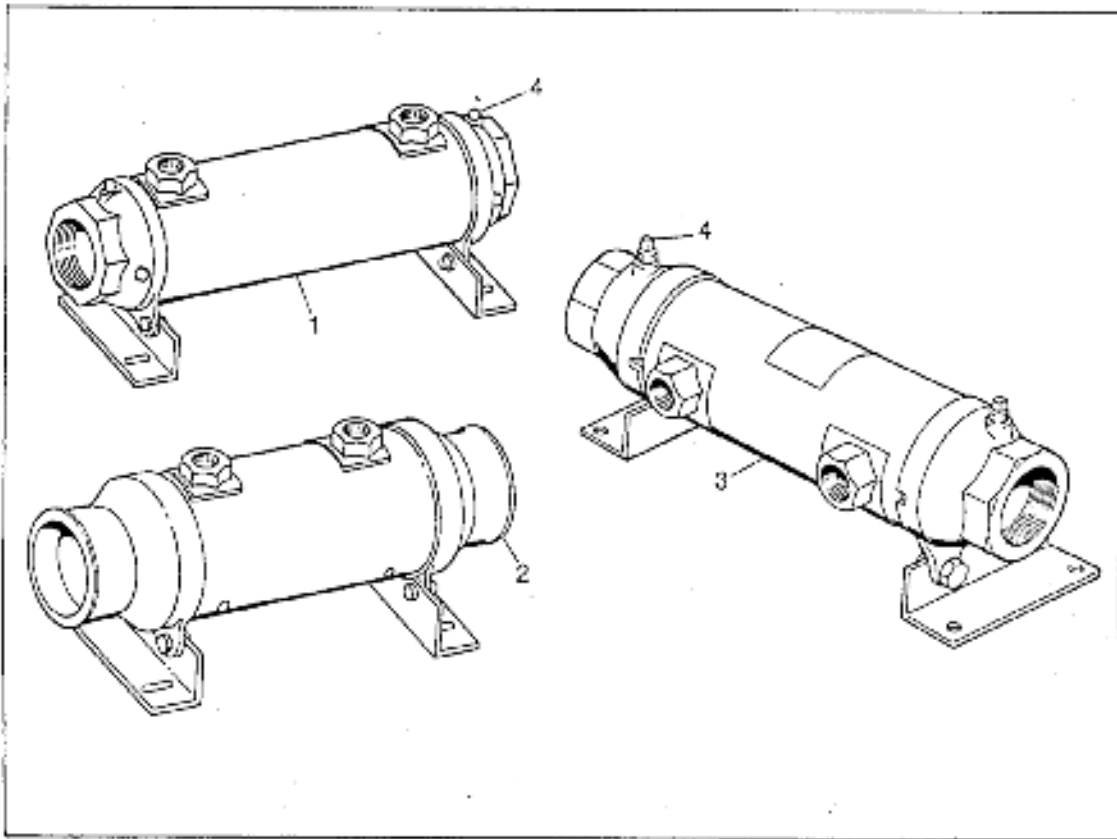


Figure 64. Oil Coolers

ITEM	DESCRIPTION	PART NO.	QTY
1	SEA WATER COOLER (17" X 5-1/8" DIA)	1-13769-0000	1
2	FRESH WATER COOLER (19 1/2" X 6 1/8" DIA.)	1-13795-0000	1
3	SEA WATER COOLER (12 3/4" X 4 3/8" DIA)	1-07808-5000	1
4	ZINC PENCILS	1-12445-0400	2

## 8.14 HOSE AND FITTING KIT

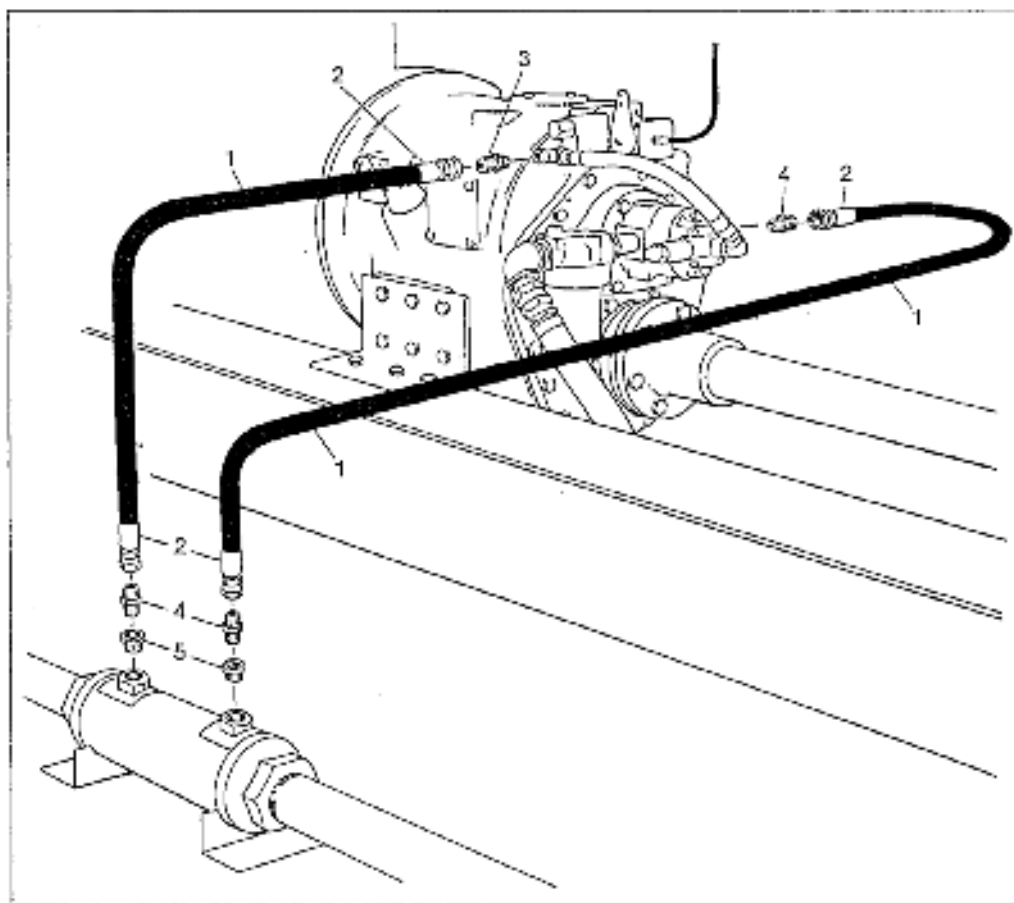


Figure 85. Hose and Fitting Kit no. 1-13949-0000.

ITEM	DESCRIPTION	PART NO.	QTY
REF	HOSE AND FITTING KIT *	1-13949-0000	1
1	HOSE; ½" I.D X 6 FT.	1-11505-0000	1
2	FEMALE FITTING; 7/8-14 JIC	1-11282-0500	4
3	MALE CONNECTOR; ½ N.P.T X 7/8-14 J.I.C	1-11214-1800	1
4	MALE CONNECTOR; ¾ N.P.T X 7/8-14 J.I.C	1-11214-2000	3
5	BUSHING; 1" X ¾"	1-11253-1200	2

\*NOTE: oil cooler is not included in hose and fitting kit

## 8.15 OIL FILTER

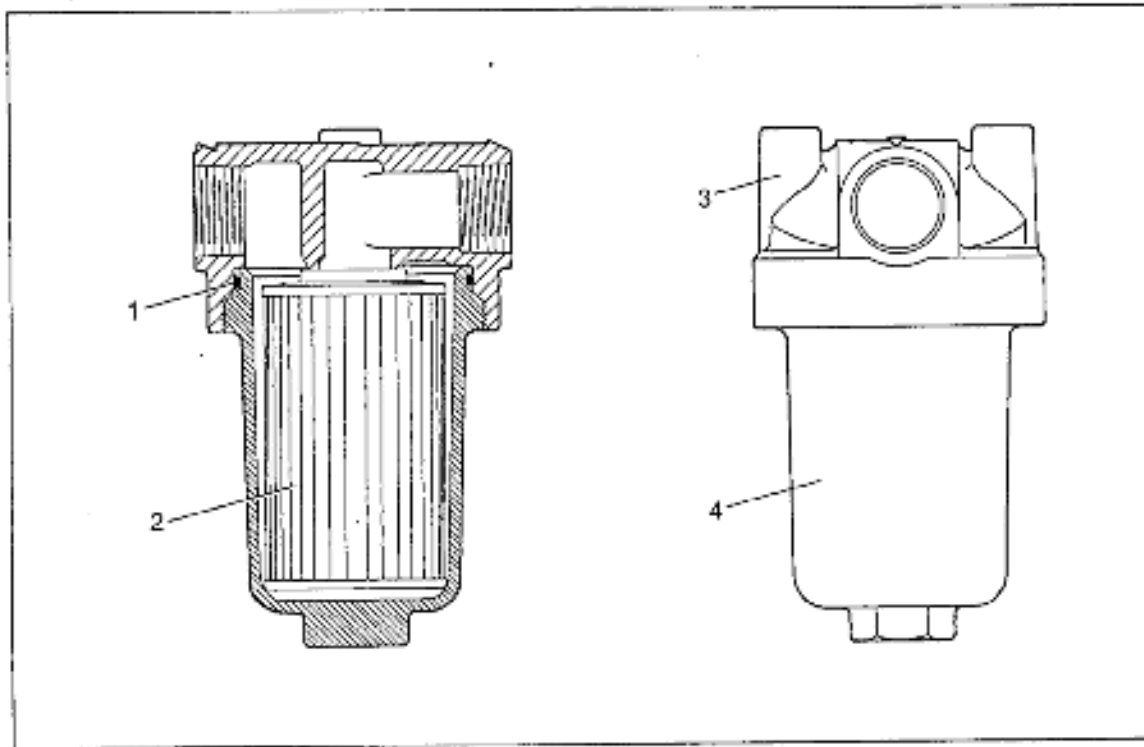
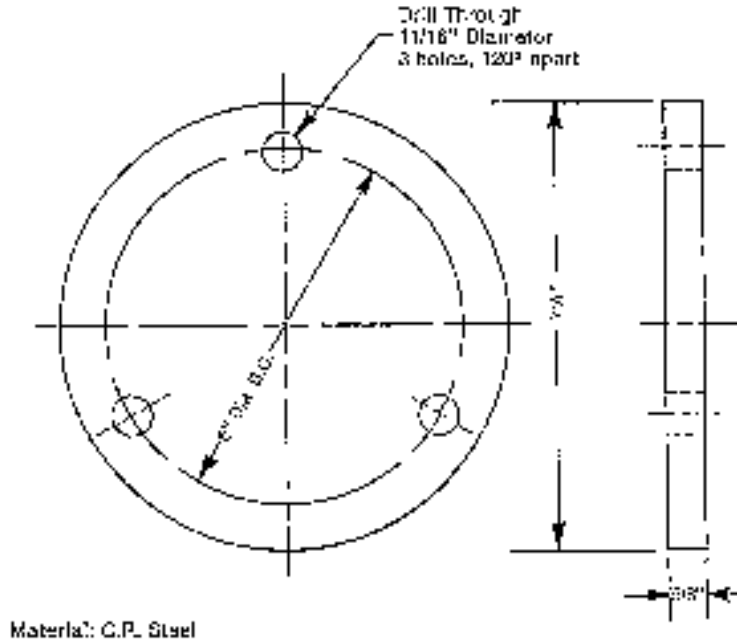


Figure 66. Cross-Section and External View: Oil Filter no. 1-13286-0000.

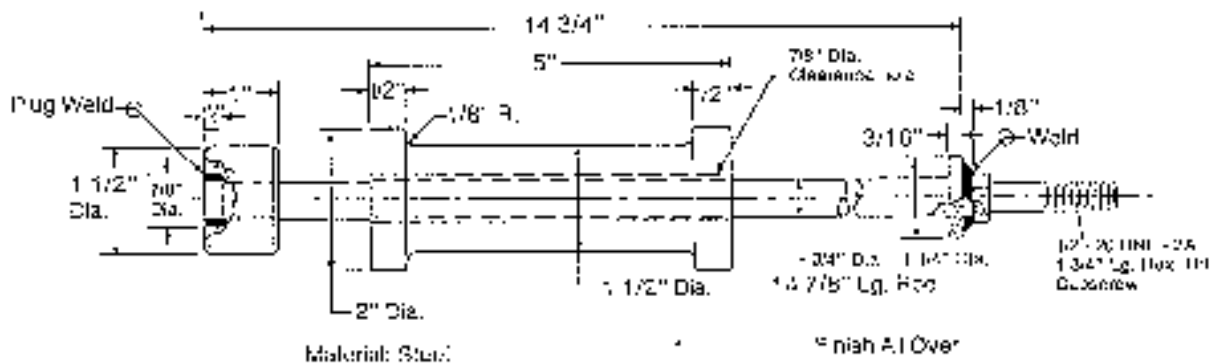
ITEM	DESCRIPTION	PART NO.	QTY
REF	OIL FILTER ASSEMBLY	1-13286-0000	1
1	HOUSING SEAL	1-15110-0000	1
2	ELEMENT ASSEMBLY	1-03151-1500	1
3	HEAD	1-13286-0100	1
4	HOUSING	1-03151-1200	1

## SECTION 9. SPECIAL TOOLS

Special tools, which may be used in repair work, are shown on the following pages. All pertinent information for fabrication is included. These tools are not normally available from Capitol Gears, Inc.



HY-24000 Pulling Attachment for Output Coupling  
Special Tool No. 1-90025-0000



Pinion Shaft Knockout Puller  
for HY and HP Clutches  
Special Tool no. 1-90022-0000