

## SECTION 8. PARTS INFORMATION

### 8.1 PARTS ORDERING PROCEDURE

A. Contact your local dealer, distributor, or authorized service center.

B. Contact Capitol Gears, Inc. If the above cannot supply the part(s) you need write:

Customer service	Cable address:
Capitol Gears, Inc.	"Cap marine"
349 North Hamline Ave.	Tel: (612) 645-9491
St. Paul, MN 55104	Telex: 29-7081
USA	

Necessary Information	Sample
1. Model	HP-9400
2. Option Code	1-09400-03011-10111
3. Serial No.	1-105-0680
4. Ratio	3.074:1 A.E.R
5. Eng.Mfg.No (if any)	
6. Part Number	1-00230-2800
7. Description	Clutch disc, driving
8. Figure Number and item number	Fig. 46, item 6
9. Quantity being ordered	19

**NOTE:**

Please do not use the terms "Set" or "complete" when ordering parts but specify exactly each part required.

A list of distributors for Capitol Gear equipment may be obtained by writing to the customer service department at the address mentioned above.

Do not send any equipment to the factory without authorization from the customer service department.

Capitol Gears will route parts with customer's best interest in mind if routing is not specified when ordering.

Capitol Gears, Inc. Will provide its distributors, dealers and service centers with current changes and additions to service literature.

Contact your local Capitol representative for up to date service material.

**CAPITOL GASKET AND SEAL KIT NO.**  
 1-10169-0000 (HY-7700)  
 1-10168-0000 (HY-6900)

Includes the necessary gaskets, seals and o-rings commonly used for repair.

Clutch quad rings must be purchased separately.

### 8.2 UNIT RECORD

"CAPITOL" Marine Gear Model \_\_\_\_\_  
 Serial No. \_\_\_\_\_  
 Installed in (Name of Vessel) \_\_\_\_\_  
 Installed by \_\_\_\_\_ date \_\_\_\_\_  
 Address \_\_\_\_\_  
 For use with (Engine & Model) \_\_\_\_\_  
 Type of Service \_\_\_\_\_  
 Purchased from (Dealer's Name & Add.) \_\_\_\_\_  
 \_\_\_\_\_  
 Date purchased \_\_\_\_\_

### 8.3 SELECTOR VALVE

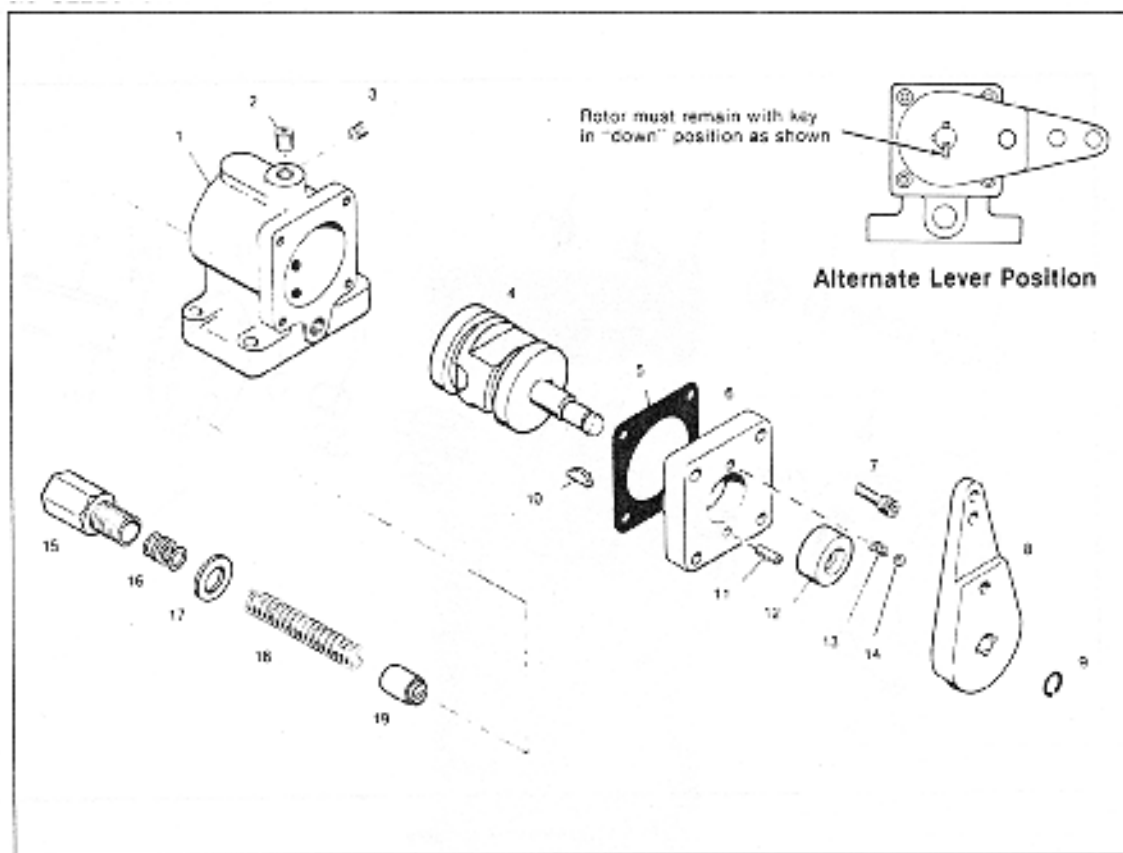


Fig. 40. Selector Valve Assembly, no. 1-09427-2000

ITEM	DESCRIPTION	PART NUMBER	QTY
REF.	ASSEMBLY, SELECTOR VALVE	1-09427-2000	1
1	BODY	1-01141-3500	1
2	PIPE PLUG, HEX SOCKET; 1/4 N.P	1-11279-0300	1
3	PIPE PLUG, HEX SOCKET; 1/8 N.P	1-11279-0200	1
4	VALVE (ROTOR)	1-01144-1000	1
5	GASKET, VALVE COVER	1-01156-3700	1
6	COVER	1-01142-3400	1
7	CAPSCREW, SOCKET HEAD; 1/4-20X 1/2 LG	1-09432-0800	4
8	LEVER	1-01143-4200	1
9	RETAINING RING, EXTERNAL	1-13125-0000	1
10	KEY, 3/32x 1/2" DIA	1-01164-3200	1
11	SPRING PIN, 1/4" DIA.X 1/2" LG	1-12097-0800	1
12	OIL SEAL	1-01152-3200	1
13	SPRING, INDEXING	1-01132-1500	1
14	BALL, INDEXING; 1/4" DIA	1-11200-0000	1
15	ADJUSTMENT SCREW, RELIEF	1-12617-0000	1
16	WASHER,.003" THICK	1-12619-0000	5
17	WASHER,. 1/16" THICK	1-10288-0700	1
18	SPRING, RELIEF VALVE	1-12618-0000	1
19	PLUNGER, SAFETY RELIEF	1-12616-0000	1

## 8.4 OIL PUMP

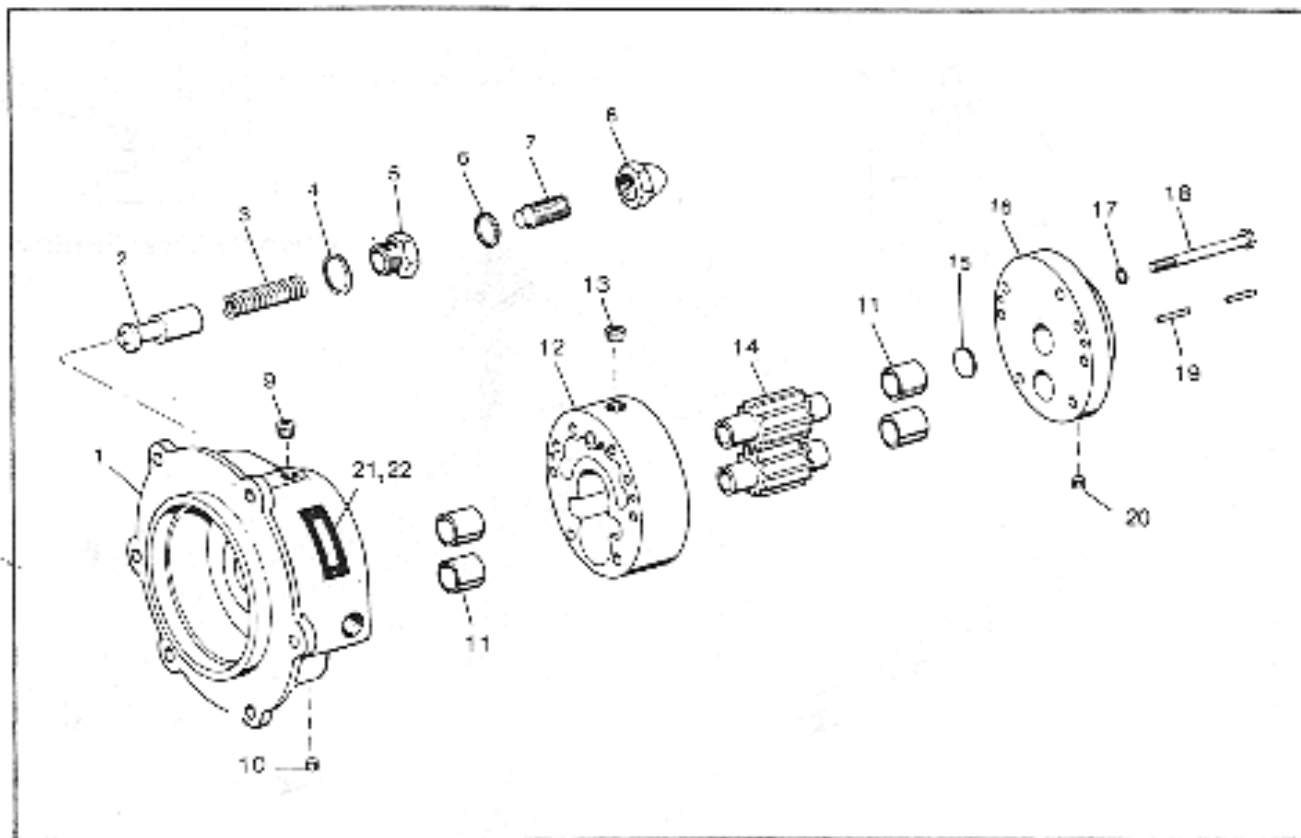


Fig. 41. Oil Pump Assembly

OIL PUMP ASSEMBLY  
NO. 1-07800-0100

ITEM	DESCRIPTION	PART NUMBER	QTY
REF.	ASSEMBLY, OIL PUMP	1-07800-0100	1
1*	ADAPTER, OIL PUMP	1-07721-0900	1
2	PLUNGER, RELIEF VALVE	1-07725-0800	1
3	SPRING, PRSSURE REGULATING	1-07743-0800	1
4	WASHER; 11/4" O.D	1-12901-0000	1
5	INSERT, RELIEF VALVE	1-07724-0800	1
6	WASHER; 7/8" O.D	1-12902-0000	1
7	SCREW, PRESSURE RELIEF	1-06660-0800	1
8	NUT, DOME	1-06667-0800	1
9	PIPE PLUG, HEX SOCKET; 1/4 N.P.T	1-11279-0300	1
10	PIPE PLUG, HEX SOCKET; 1/8-27 N.P.T	1-11279-0200	1
11	BUSHING 7/8 O.D X 3/4 LG X 3/4 BORE (12 DUR)	1-11380-0000	4
12	BODY, OIL PUMP	1-07856-0800	1
13	PIPE PLUG, HEX SOCKET; 3/8 N.P.T	1-11279-0400	1
14	GEAR, PUMP	1-09688-0900	2
15	DISC, FLAT	1-13731-0000	1
16**	COVER, OIL PUMP	1-07723-1100	1
17	LOCKWASHER; 5/16"	1-09458-0800	7
18	CAPSCREW, HEX HD. ; 5/16-18 NC X 2/12	1-10946-0000	7
19	SPRING PIN; 1/4 X 3/4	1-12097-1200	4
20	PIPE PLUG, HEX SOCKET; 1/16-27 N.P.T	1-11279-0100	1
21	PLATE, PUMP NUMBER	1-11209-0000	1
22	DRIVE SCREW, RD. HD.	1-13275-0000	2

\* OIL PUMP ADAPTER ASSEMBLY NO. 1-07721-3500 includes items 1,9,10 and 11. Bushings are installed and reamed to size.

\*\* OIL PUMP COVER ASSEMBLY NO. 1-07723-1300 includes items 11, 15, 16 and 20. Bushings are installed and reamed to size.

**1.5 CLUTCH**

Clutch no. 1-00100-6000

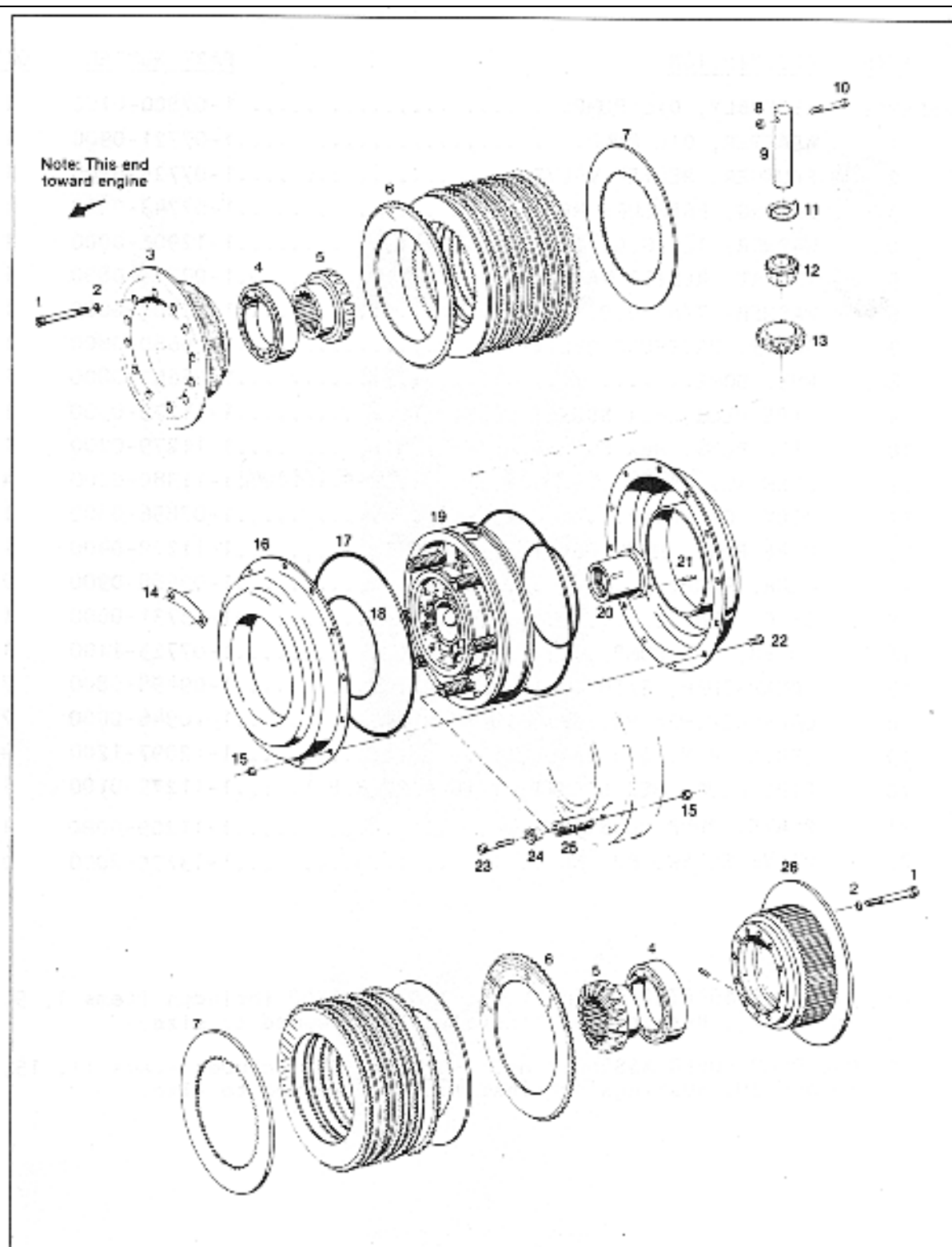


Fig. 42. Clutch Assembly

PART NO. 1-00100-6000

ITEM	DESCRIPTION	PART NUMBER	QTY
REF.	CLUTCH ASSEMBLY	1-00100-6000	1
1	CAPSCREW, SOCKET HD 3/8-16X3 1/4"	1-12247-0000	24
2	LOCKWASHER 3/8 STD	1-08755-0800	24
3	FLANGE, CLUTCH (FORWARD)	1-00212-4100	1
4	BALL BEARING	1-00211-2500	2
5	GEAR BEVEL	1-00215-2600	2
6	CLUTCH DISC, DRIVING	1-00230-4400	13
7	CLUTCH DISC, DRIVEN	1-00233-1200	13
8	NUT, SELF-LOCKING 1/4-28NF	1-00226-3600	3
9	SHAFT, BEVEL PINION	1-00220-3600	3
10	CAPSCREW, SOCKET HD 1/4-28X 2 "	1-09433-0800	3
11	THRUST WASHER	1-00221-3600	3
12	BEARING, BEVEL PINION	1-00218-2500	3
13	PINION, BEVEL	1-00217-2600	3
14	NAMEPLATE	1-12398-1200	1
15	NUT, SELF-LOCKING, 5/16-18 NC	1-11399-0000	36
16	CYLINDER	1-00234-5500	2
17	QUAD RING	1-00237-3600	2
18	QUAD RING	1-00238-5800	2
19	CARRIER, BEVEL GEAR	1-00219-3700	1
20	BUSHING, FORWARD COMMUTATOR	1-00247-3600	1
21	SPRING PIN	1-12096-1000	3
22	CAPSCREW, SOCKET HD, 5/16-18X 5/8"	1-09468-0800	24
23	CAPSCREW, SOCKET HD, 5/16-18X 2 "	1-05386-0800	12
24	RETAINER, RETURN SPRING	1-00243-3600	12
25	SPRING, RETURN	1-00239-3700	12
26	FLANGE, CLUTCH (REVERSE)		
	-(INCLUDES SPRING PINS)	1-00210-6700	1

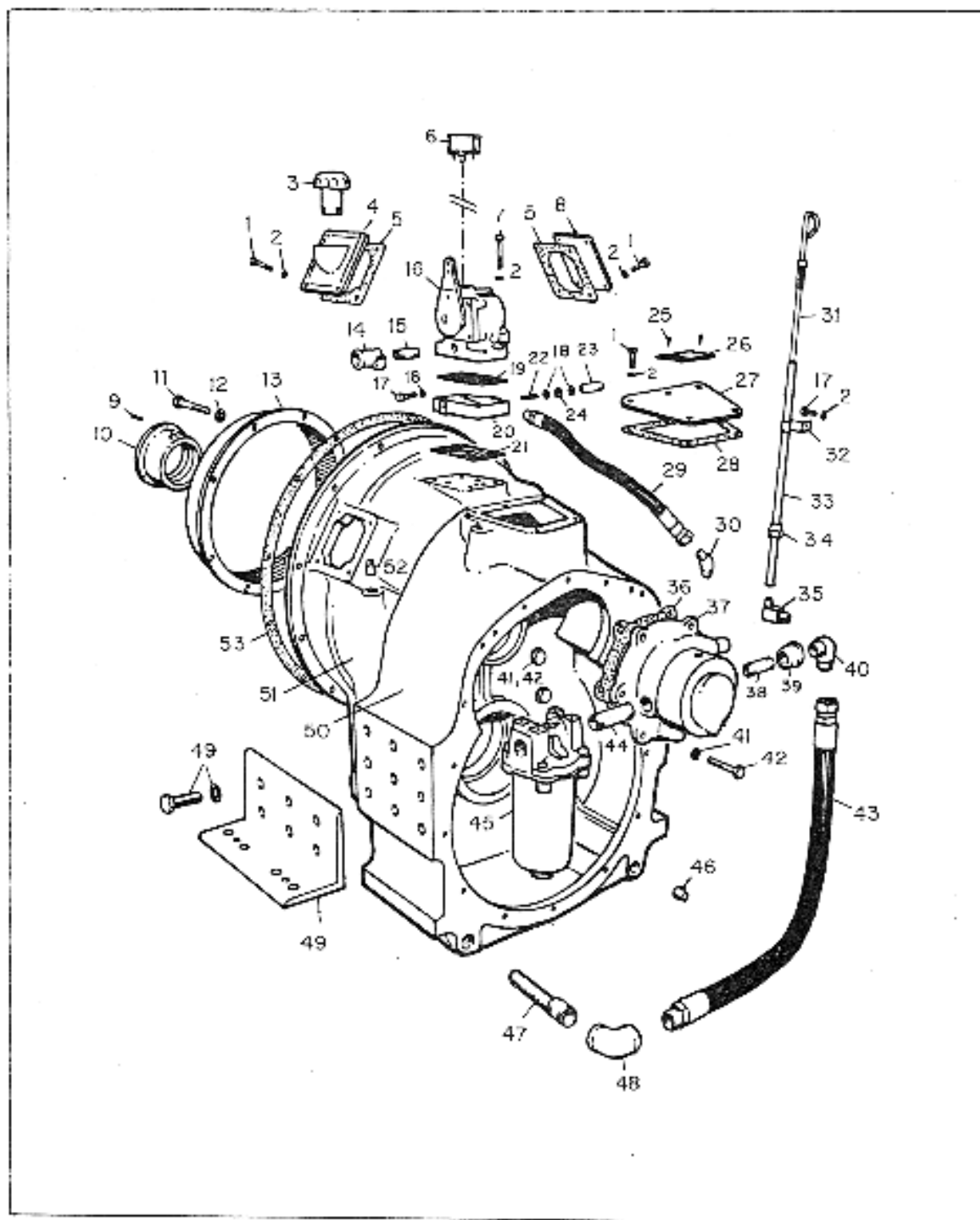


Fig. 43 Housing and Related Parts 11V-7700

### 1.6 TRANSMISSION HOUSING AND RELATED PARTS

ITEM	DESCRIPTION	PART NUMBER	QTY
1	CAPSCREW, HEX HD; 5/16-18X1"	1-08372-0800	13
2	LOCKWASHER, LIGHT; 5/16	1-09458-0800	12
3	BREATHER	1-05243-0800	1
4	COVER, BREATHER/ INSPECTION	1-09188-0800	1
5	GASKET, INSPECTION COVER	1-01225-1500	2
6	GAUGE, PRESSURE	1-09669-0900	1
7	CAPSCREW, HEX HD.; 5/16-18X2 ¼	1-12452-0000	4
8	COVER, INSPECTION	1-01228-1500	1
9	SPRING PIN; 3/16 DIA. X 5/8"	1-12096-1000	3
10	BUSHING ASSEMBLY, REAR COMMUTATOR	1-00248-4200	1
11	CAPSCREW, HEX HD; 7/16-14X1 ¾	1-07106-0800	8
12	LOCKWASHER, LIGHT; 7/16	1-09462-0800	8
13	DRUM, REVERSE CLUTCH	1-00250-3600	1
14	TEE, REDUCING; 1/2X 3/8X3/8	1-11260-0200	1
15	NIPPLE, PIPE; 3/8 dia. X 2"	1-11259-0100	1
16	SUB-ASSEMBLY, SELECTOR VALVE	1-09427-2000	1
17	CAPSCREW. HEX HD; 5/16-181/2"	1-12145-0000	1
18	GASKET, 5/16	1-09471-0800	3
19	GASKET, VALVE TO BASE PLATE	1-13015-0000	1
20	BASE PLATE	1-01150-3400	1
21	GASKET, BASE PLATE TO HOUSING	1-01154-3400	1
22	SET SCREW, SOCKET; 5/16-18 ½	1-09466-0800	1
23	DOME NUT; 5/16-18	1-09461-0800	1
24	LOCK NUT, LIGHT; 5/16-18	1-09464-0800	1
25	DRIVE SCREW, ROUND HD; #2X3/16"	1-13275-0000	2
26	NAMEPLATE	1-11210-0000	1
27	INSPECTION COVER, REDUCTION HOUSING	1-06966-1100	1
28	GASKET, INSPECTION COVER	1-06968-0800	1
29	HOSE; ¾ I.D	1-08873-0900	1
30	ELBOW, MALE 45°	1-11220-1100	1
31	OIL STICK	1-07916-0800	1
32	BRACKET, OIL STICK	1-07915-0900	1
33	TUBE, OIL STICK	1-07915-0900	1
34	SHORT NUT; 45° FLARE	1-11243-0800	1
35	ELBOW, 90°	1-11237-1600	1
36	GASKET, BEARING RETAINER TO PUMP	1-06762-0800	1
37	SUB-ASSEMBLY, OIL PUMP OIL PUMP FOR 4.524: 1 E.R MODEL	1-07800-0100	1
38	PIPE NIPPLE; ¾ dia. X3"	1-11259-0700	1
39	BUSHING, REDUCER; 1/3/4	1-11224-1100	1
40	ELBOW, 90° MALE	1-11221-2100	1
41	LOCKWASHER, LIGHT; ½	1-11083-0000	16
42	CAPSCREW, HEX HD; ½-13 X 1 ¾	1-10058-0000	16
43	HOSE	1-13192-0000	1
44	PIPE NIPPLE, ¾ dia. X 2"	1-11259-1700	1
45	OIL FILTER	1-13811-0000	1
46	PIPE PLUG; 1/11 ½ NPT	1-11251-0500	1
47	SUCTION SCREEN	1-13801-0000	1
48	ELBOW, 90°; 1" NPT	1-11246-0600	1
49	KIT, MOUNTING FEET (OPTIONAL)	1-13635-0000	1
50	HOUSING, REDUCTION; ALL A.E.R RATIO	1-10302-6000	1
	HOUSING, REDUCTION; 3.035: E.R RATIO	1-10302-6100	1
	HOUSING, REDUCTION; 3.50: 1 E.R RATIO	1-10302-6200	1
	HOUSING, REDUCTION; 3.875:1 E.R RATIO	1-10302-6300	1
	HOUSING, REDUCTION; 4.524:1 E.R RATIO	1-10302-6400	1
51	HOUSING, REVERSE	1-01101-3600	1
52	PIPE PLUG, SQ. HD; 3/8-18 NPT	1-11251-0300	2
53	GASKET, HOUSING TO OIL DAM	1-01102-3600	1



## 8.7 ADAPTER GROUP

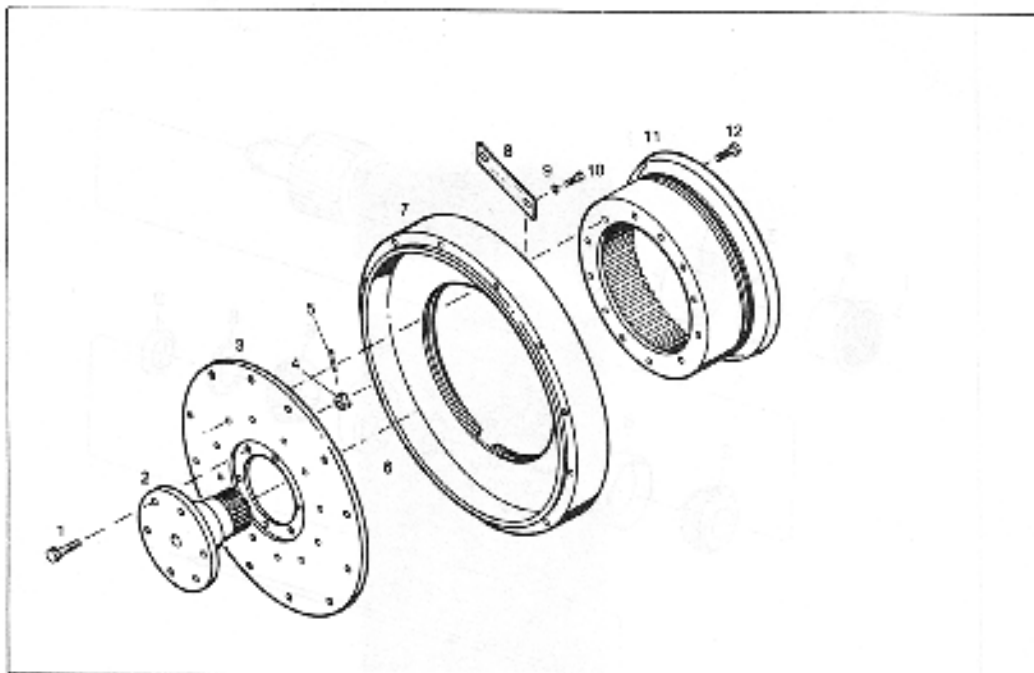


Fig. 44. 'HY' Adapter Group

ITEM	DESCRIPTION	PART NUMBER	QTY
1	CAPSCREW, HEX HD. DRILLING END	1-06972-0800	6
2	DRIVE FLANGE ASSEMBLY (SEE "HY" INSTALLATION DRAWING)		1
3	FLYWHEEL ADAPTER (SEE "HY" INSTALLATION DRAWING)		1
4	HEX.NUT HEAVY SLOTTED	1-06973-0800	6
5	COTTER PIN	1-12769-5400	6
6	BUSHING, DRIVE FLANGE	1-00326-2600	1
7	OIL DAM ADAPTER (SEE "HY" INSTALLATION DRAWING)		1
8	COVER, AIR VENT	1-01118-2700	1
9	LOCKWASHER, 5/16 DIA	1-09458-0800	9
10	CAPSCREW, HEX. HD 5/16-18 X 1/2	1-12145-0000	4
11	DRUM CLUTCH, DRIVING	1-01116-3600	1
12	CAPSCREW, HEX. HD (POLYLOK)	1-13804-0000	12

### 8.8 PINION SHAFT AND RELATED PARTS

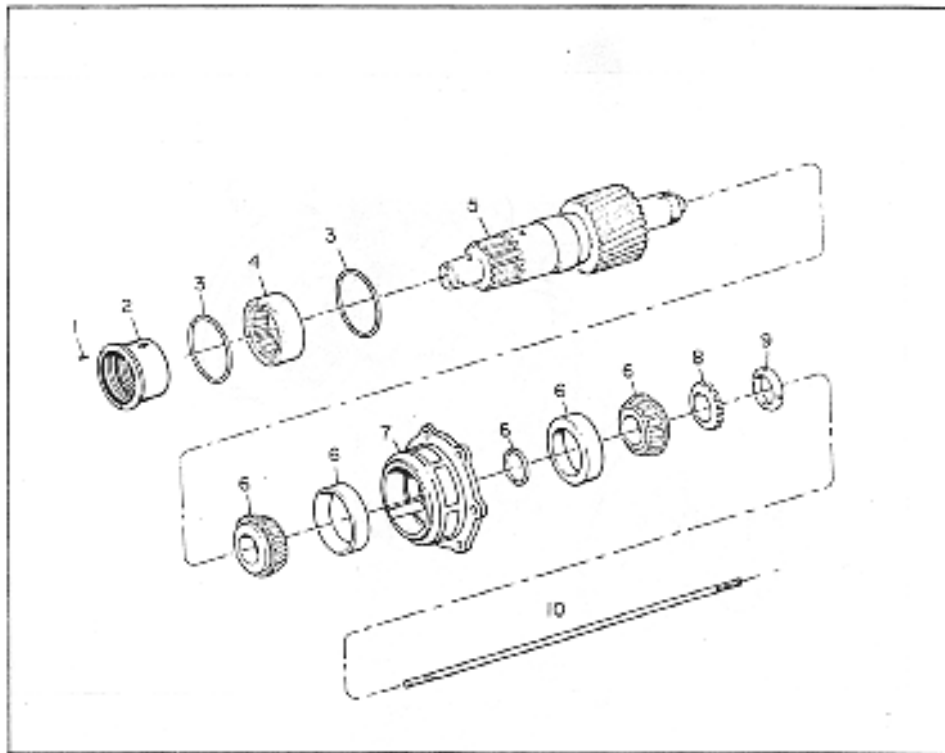


Fig. 45.

### 8.9 IDLER GEAR AND RELATED PARTS

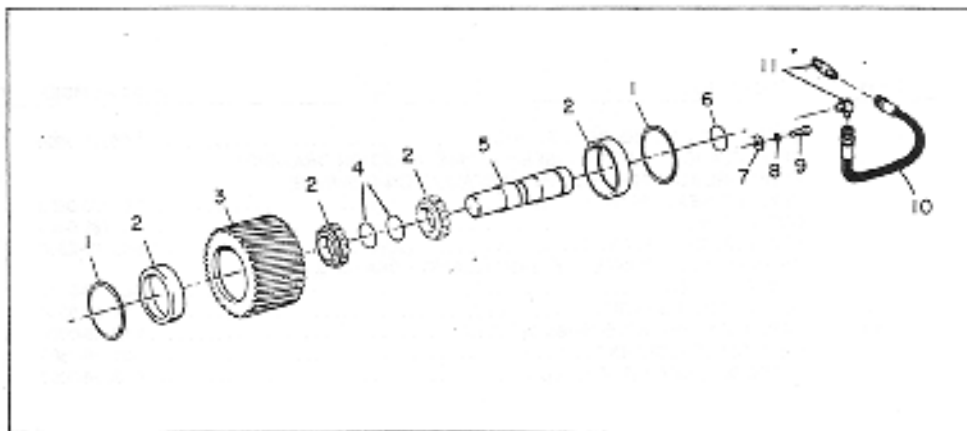


Fig. 46.

**PINION SHAFT AND RELATED PARTS**

<b>ITEM</b>	<b>DESCRIPTION</b>	<b>PART NUMBER</b>	<b>QTY</b>
1	SPRING PIN	1-12096-1000	3
2	BUSHING ASSEMBLY, REAR COMMUTATOR	1-00248-4200	1
3	SNAP RING	1-07732-0800	2
4	BEARING, ROLLER	1-07727-0800	1
5	PINION AND SHAFT ASSEMBLY	(SEE CHART P.54)	1
6	BEARING ASSEMBLY (5 PIECES)	1-12958-0000	1
7	RETAINER, BEARING (INCLUDES RING)	1-12959-2600	1
8	LOCKWASHER, BEARING	1-13235-0000	1
9	LOCKNUT, BEARING	1-06903-0800	1
10	SHAFT, PUMP DRIVE	1-07892-0800	1

**IDLER GEAR AND RELATED PARTS**

<b>ITEM</b>	<b>DESCRIPTION</b>	<b>PART NUMBER</b>	<b>QTY</b>
1	SNAP RING	1-10112-0000	2
2	BEARING, IDLER (4 PIECES)	1-10117-0000	2
3	IDLER; 30 TEETH	1-10107-0000	1
4	SNAP RING	1-12763-0000	2
5	SHAFT IDLER	1-10105-0200	1
6	O-RING	1-10336-0000	1
7	WROUGHT WASHER	1-10338-0000	1
8	LOCKWASHER, LIGHT; 5/16"	1-09458-0800	1
9	CAPSCREW, HEX HD.; 5/16-18X 1/2"	1-12145-0000	1
10	HOSE ASSEMBLY	1-07875-1000	1
11	MALE ELBOW	1-11237-0300	2

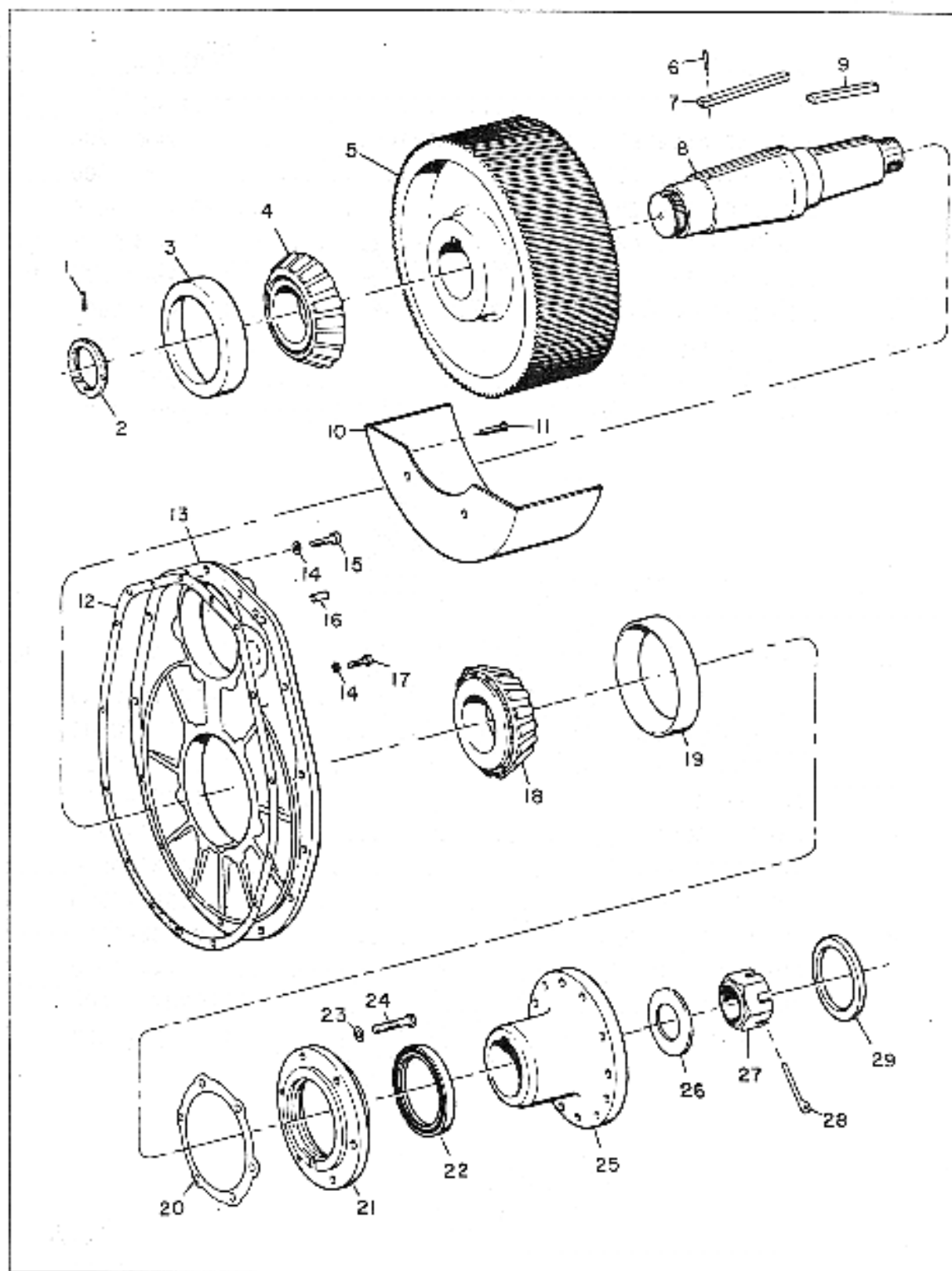


Fig. 47. Output Gear and Related Parts

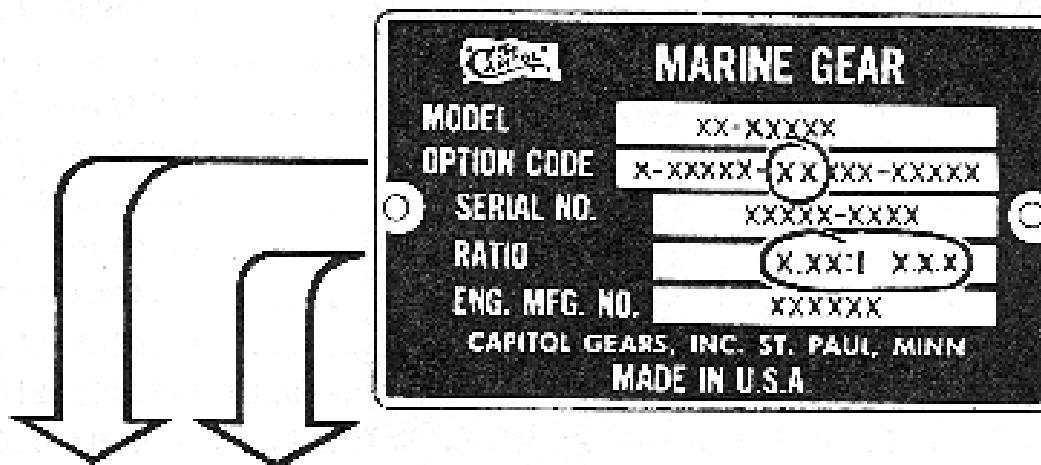
**8.10 OUTPUT GEAR, COVER AND RELATED PARTS**

<b>ITEM</b>	<b>DESCRIPTION</b>	<b>PART NUMBER</b>	<b>QTY</b>
1	SET SCREW, SOCKET : ¼-20 X 3/8"	1-11993-0000	1
2	LOCKNUT, BEARING (MODIFIED)	1-07706-1200	1
3	CUP, BEARING	1-07706-1200	1
4	CONE, BEARING	1-07706-1000	1
5	GEAR, OUTPUT	(SEE CHART P.54)	1
6	SPRING PIN	1-12096-1000	1
7	KEY, DRIVEN GEAR	1-07714-0800	1
8	SHAFT, DRIVEN GEAR	1-07715-0800	1
9	KEY, OUTPUT FLANGE	1-07712-0800	1
10	OIL PAN	1-10339-0000	1
11	CAPSCREW, DRILLED HEX HD	1-11363-0000	1
12	GASKET, REDUCTIN GEAR COVER	1-10304-0000	1
13	COVER, RED. GEAR HSG. – ALL RATIOS NON-IDLER	1-10303-2100	1
	COVER, RED. GEAR HSG. – 3:1 RATIO WITH IDLER	1-10303-0000	1
	COVER, RED. GEAR HSG. – 3 1/2: 1 RATIO W/ IDLER	1-10313-0000	1
	COVER, RED. GEAR HSG. - 4:1 RATIO W/ IDLER	1-10323-0000	1
	COVER, RED. GEAR HSG. – 4 1/2:1 RATIO W/ IDLER	1-10333-0000	1
14	LOCKWASHER, LIGHT	1-11083-0000	16
15	CAPSCREW, HEX HD.	1-09141-0800	15
16	DOWEL, COVER TO HSG.	1-12311-0000	2
17	CAPSCREW, SOCKET HD.	1-07544-0800	1
18	CONE, BEARING	1-07707-1000	1
19	CUP, BEARING	1-07707-1200	1
20	SHIM PACK	1-07711-3400	1
21	BEARING CAP AND OIL SEAL RETAINER	1-07704-0800	1
22	OIL SEAL	1-12971-0000	1
23	LOCKWASHER, LIGHT: 5/8"	1-06074-0800	6
24	CAPSCREW, HEX HD.: 5/8- 11X 11/2"	1-03738-0800	6
25	FLANGE, OUTPUT	1-07705-1200	1
26	WASHER	1-07717-0800	1
27	NUT	1-07716-0800	1
28	COTTER PIN	1-07718-0800	1
29	RING PILOT	1-06022-0800	1

### 8.11 REDUCTION GEAR SELECTION CHART

HOW TO SELECT THE CORRECT PINION AND OUTPUT GEAR FOR YOUR TRANSMISSION:

- LOCATE THE NAMEPLATE (ON TOP OF HOUSING) AND DETERMINE THE TWO REDUCTION RATIO OPTION CODE NUMBERS (CIRCLED IN SAMPLE BELOW) AND THE RATIO. THE NUMBER OF TEETH MAY BE CHECKED ALSO.
- MATCH THIS INFORMATION WITH THE CHART BELOW TO DETERMINE THE CORRECT PART NUMBER (S).



OPTION CODE	RATIO	PART NAME	NO. OF TEETH	PART NUMBER
01	2.485:1 AER	PINION	35	1-11872-0000
		GEAR	87	1-13382-2000
02	4.524:1 ER	PINION	21	1-11883-0000
		GEAR	95	1-13386-2000
03	2.697:1 AER	PINION	33	1-11873-0000
		GEAR	89	1-13377-2000
04	3.067:1 AER	PINION	30	1-11874-0000
		GEAR	92	1-13378-2000
05	3.519:1 AER	PINION	27	1-11877-0000
		GEAR	95	1-13387-2000
06	3.88:1 AER	PINION	25	1-11879-0000
		GEAR	97	1-13385-2000
07	4.545:1 AER	PINION	22	1-11882-0000
		GEAR	100	1-13384-2000
08	3.035:1 ER	PINION	29	1-11875-0000
		GEAR	88	1-13379-2000
09	3.500:1 ER	PINION	26	1-11878-0000
		GEAR	91	1-13381-2000
10	3.875:1 ER	PINION	24	1-11880-0000
		GEAR	93	1-13380-2000

## 8.12 OIL FILTER

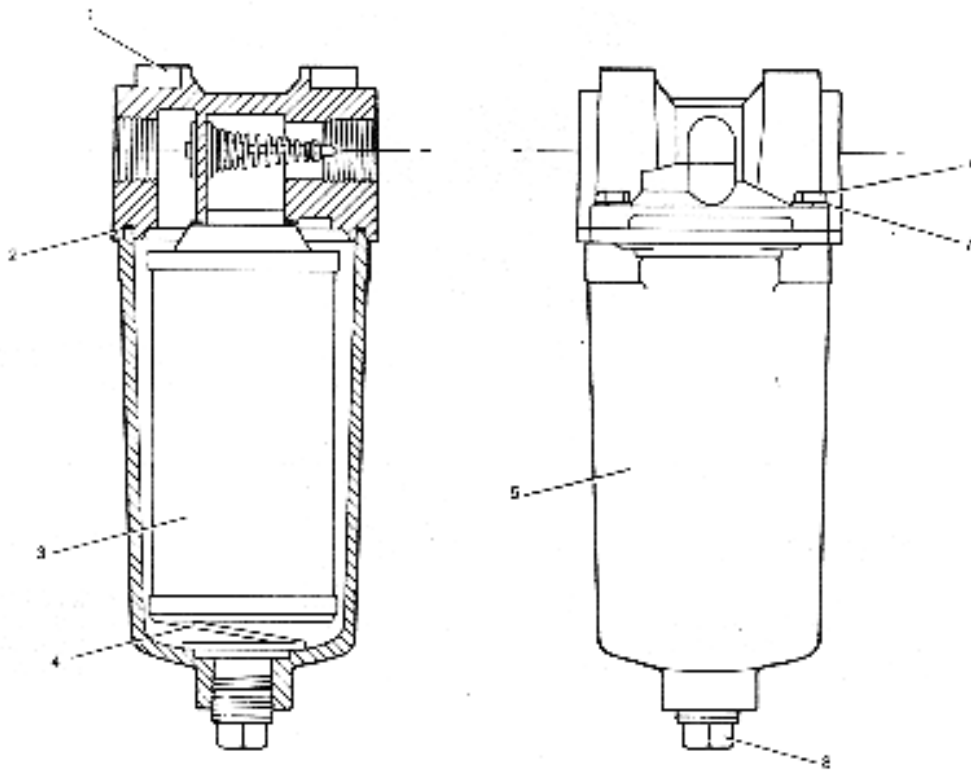


Fig. 48. Oil Filter No. 1-13811-0000

ITEM	DESCRIPTION	PART NUMBER	QTY
REF.	ASSEMBLY, OIL FILTER	1-13811-0000	1
1	HEAD	1-13811-0100	1
2	SEAL, HOUSING	1-13811-0500	1
3	ASSEMBLY, ELEMENT (INCLUDES ELEMENT SEAL)	1-13811-0300	1
4	SPRING, ELEMENT	1-13811-0600	1
5	HOUSING	1-13811-0200	1
6	CAPSCREW, HEX HEAD	1-12339-0000	4
7	LOCKWASHER	1-09458-0800	4
8	PLUG, DRAIN	1-11251-0500	1

### 8.13 PROPELLER COUPLING KITS

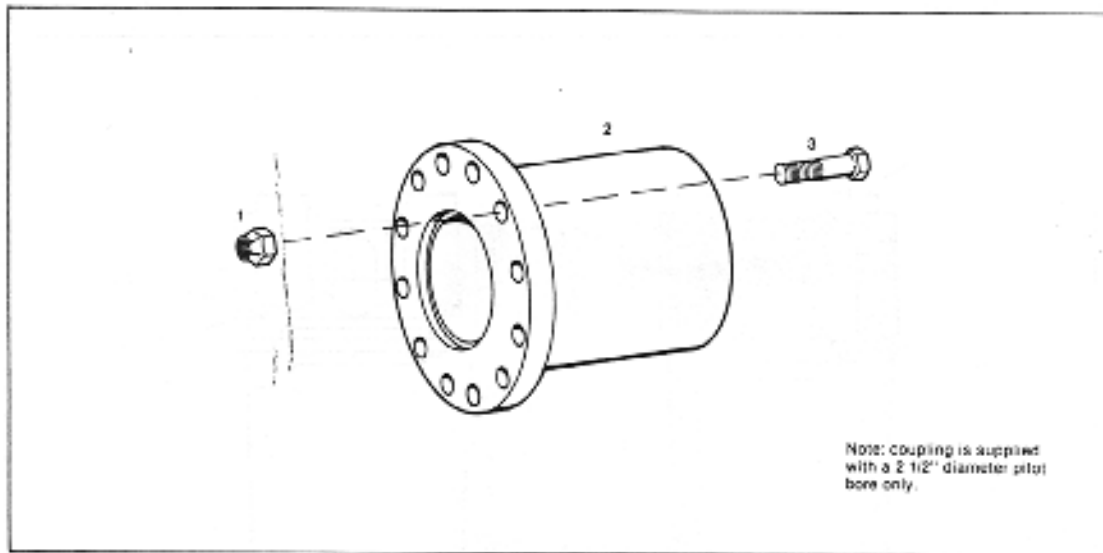


Fig. 48 Propeller Coupling Kit

ITEM	DESCRIPTION	PART NUMBER	QTY
REF.	PROPELLER COUPLING KIT	1-13577-1000	1
1	NUT, SELF-LOCKING 3/4-10 NC	1-13095-0000	12
2	COUPLING, PROP SHAFT	1-13826-0000	1
3	CAPSCREW, HEX HEAD 3/4-10 NCX3 1/4"	1-08793-0800	12



### 1.14 OIL COOLERS

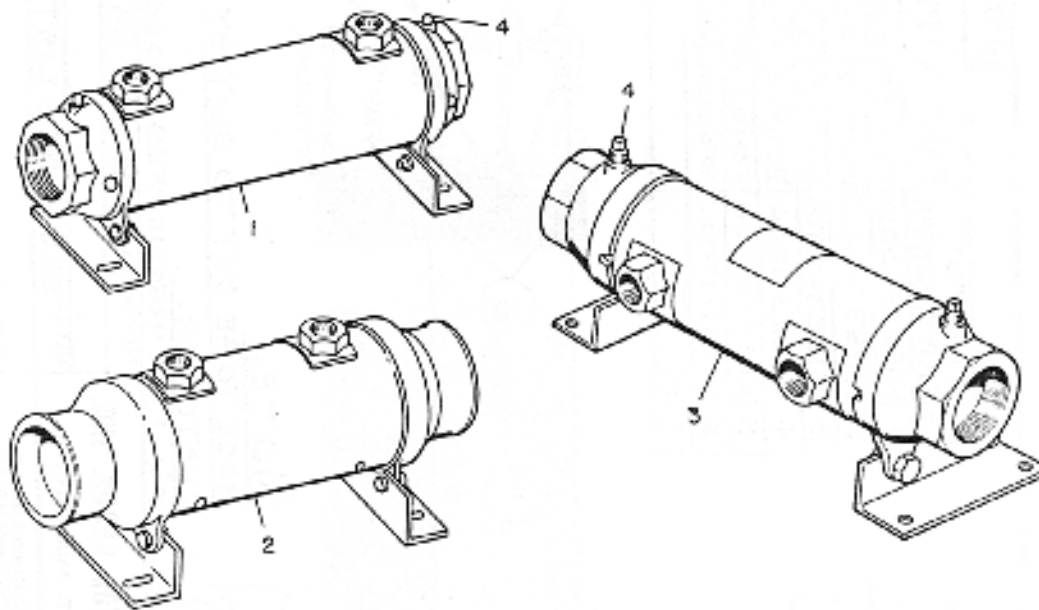


Fig. 50. Oil Coolers

ITEM	DESCRIPTION	PART NUMBER	QTY
1	SEA WATER COOLER (17" X 5 1/8" DIA)	1-13769-0000	1
2	FRESH WATER COOLER ( 19 1/2" X 6 1/8" DIA)	1-13795-0000	1
3	SEA WATER COOLER (12 3/4" X 4 3/8" DIA)	1-07808-5000	1
4	ZINC PENCILS	1-12445-0400	2

NOTE: Hose and fitting kit no. 1-13888-0000 may be ordered with any of the above oil coolers.

1" N.P. CONN.

DEM. NO.	CAPITOL PART. NUMBER	PART. NAME	QTY. REQ.
1	M1505-0000	HOSE (1/2 IN. x 6 FT.)	1
2	M1253-0900	BUSHING 3/4 X 1/2	1
3	E02B3-0800	MALE FITTING	2
4	S07253-1200	BUSHING 1 X 3/4	2
5	M112B2-0500	FEMALE FITTING	2
6	M1221-1700	90° ELBOW (JIC)	2
7	M1		

3/4-14 NP

1/2-14 NP

7/8-14 JIC

3/4 NP

1" NP TO COOLER

**NOTE:-**  
 HOSE TO BE CUT TO SUIT BY CUSTOMER.  
 ALL FITTINGS SHIPPED LOOSE.

**CAPITOL GEARS, INC.**  
 ST. PAUL, MINN.

TOLEANCES UNLESS OTHERWISE NOTED  
 FRACTIONAL MACHINING DATA  
 ANGULAR ± HP  
 REMOVE BURRS AND SHARP CORNERS

REQ.	MOD.	H/20P	REV.	NO.
1	6900			
1	7700			
1	22090			

DATE

AUTH.

REVISION

NO.

PART NAME HOSE & FITTING KIT

MATERIAL - SEE PARTS LIST

SCALE

APP.

DR. BY DWR DATE 11-8-79

1-13888-0000

## 8.16 HY- 6900

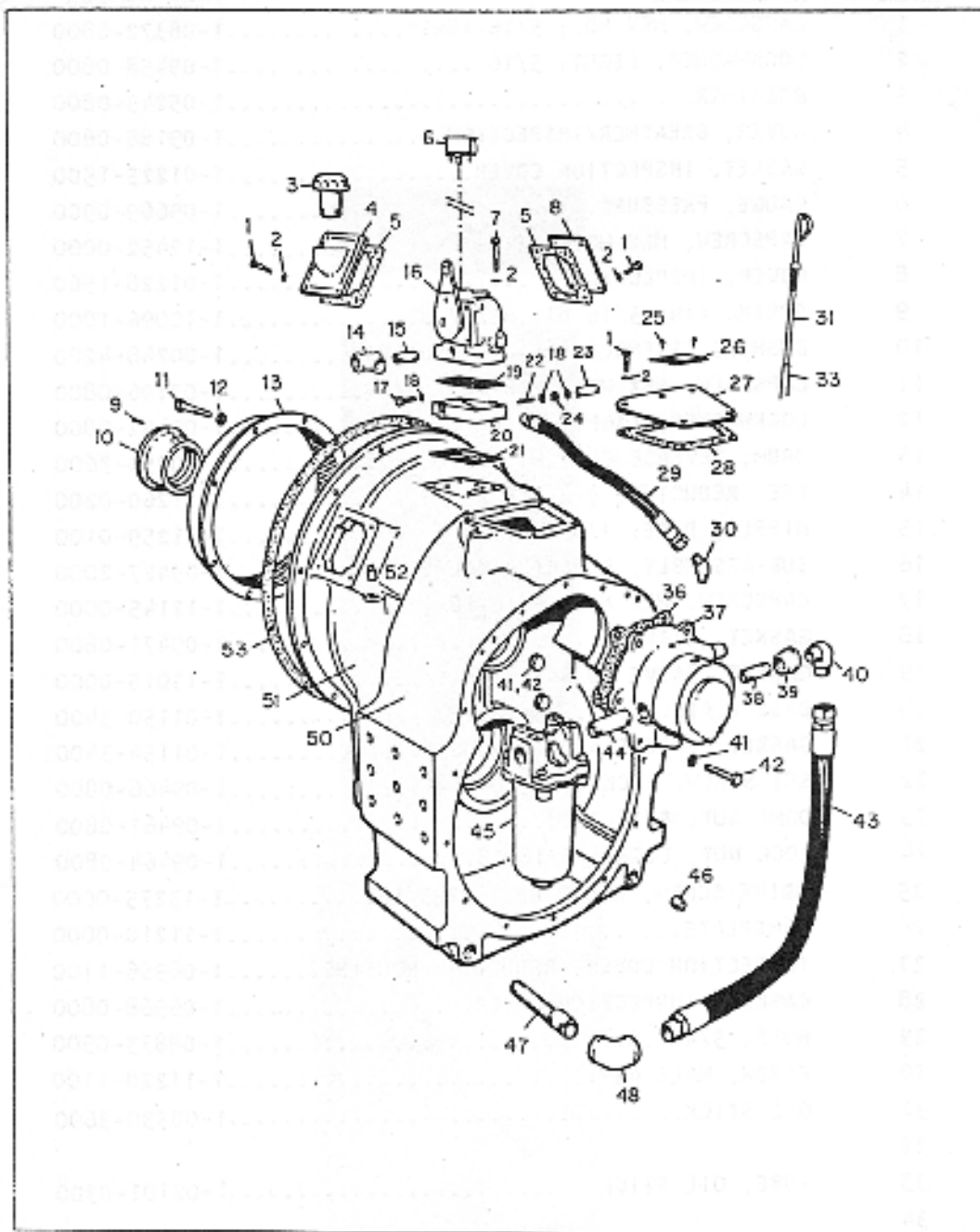


FIG. 51 HOUSING AND RELATED PARTS HY-6900

**TRANSMISSION HOUSING AND RELATED PARTS  
HY-6900**

<b>ITEM</b>	<b>DESCRIPTION</b>	<b>PART NUMBER</b>	<b>QTY</b>
1	CAPSCREW, HEX HD.; 5/16-18X 1"	1-08372-0800	13
2	LOCKWASHER, LIGHT; 5/16	1-09458-0800	12
3	BREATHER	1-05243-0800	1
4	COVER, BREATHER/ INSPECTION	1-09188-0800	1
5	GASKET, INSPECTION COVER	1-01225-1500	2
6	GAUGE, PRESSURE	1-09669-0900	1
7	CAPSCREW, HEX. HD. ; 5/16- 18 X 21/4	1-12452-0000	4
8	COVER, INSPECTION	1-01228-1500	1
9	SPRING PIN; 3/16 dia. 5/8"	1-12096-1000	3
10	BUSHING ASSEMBLY, REAR COMMUTATOR	1-00248-4200	1
11	CAPSCREW, HEX HD. : 7/16- 14X 1 3/4	1-07106-0800	8
12	LOCKWASHER, LIGHT; 7/16	1-09462-0800	8
13	DRUM, REVERSE CLUTCH	1-00250-3600	1
14	TEE, REDUCING; 1/2 X 3/8 X 3/8	1-11260-0200	1
15	NIPPLE, PIPE; 3/8 dia. X 2"	1-11259-0100	1
16	SUB-ASSEMBLY, SELECTOR VALVE	1-09427-2000	1
17	CAPSCREW, HEX HD.; 5/16-18X1/2"	1-12145-0000	1
18	GASKET, 5/16	1-09471-0800	3
19	GASKET, VALVE TO BASE PLATE	1-13015-0000	1
20	BASE PLATE	1-01150-3400	1
21	GASKET, BASE PLATE TO HOUSING	1-01154-3400	1
22	SET SCREW, SOCKET ; 5/16-18X11/2	1-09466-0800	1
23	DOME NUT ; 5/16-18	1-09461-0800	1
24	LOCK NUT, LIGHT; 5/16-18	1-09464-0800	1
25	DRIVE SCREW, ROUND HD; #2X3/16"	1-13275-0000	2
26	NAMEPLATE	1-11210-0000	1
27	INSPECTION COVER, REDUCTION HOUSING	1-06966-1100	1
28	GASKET INSPECTION COVER	1-06968-0800	1
29	HOSE; 3/4 I.D	1-08873-0900	1
30	ELBOW, MALE 45°	1-11220-1100	1
31	OIL STICK	1-00330-3600	1
32			
33	TUBE, OIL STICK	1-02101-0300	1
34			
35			
36	GASKET, BEARING RETAINER TO PUMP	1-06762-0800	1
37	SUB-ASSEMBLY, OIL PUMP	1-07800-0100	1
	OIL PUMP FOR 4.524: 1 E.R MODEL	1-07800-01200	1
38	PIPE NIPPLE; 3/4 dia. X 3"	1-11259-0700	1
39	BUSHING, REDUCER; 1X 3/4	1-11224-1100	1
40	ELBOW 90° MALE	1-11221-2100	1
41	LOCKWASHER, LIGHT; 1/2	1-11083-0000	16
42	CAPSCREW, HEX HD.; 1/2-13 X 1 3/4	1-10058-0000	16
43	HOSE	1-07845-1400	1
44	PIPE NIPPLE, 3/8 dia. X 2"	1-11259-1700	1
45	OIL FILTER	1-13811-0000	1
46	PIPE PLUG; 1-11 1/2 NPT	1-11251-0600	1
47	SUCTION SCREEN	1-13801-0000	1
48	ELBOW, 90°; 1' NPT	1-11246-0600	1
49			
50	HOUSING REDUCTION; ALL A.E.R RATIOS	1-10102-3000	1
	HOUSING, REDUCTION; 1.277: 1 E.R RATIO	1-10102-3100	1
	HOUSING, REDUCTION; 1.484: 1 E.R RATIO	1-10102-3200	1
	HOUSING, REDUCTION; 2.037:1 E.R RATIO	1-10102-3300	1
	HOUSING, REDUCTION; 2.521:1 E.R RATIO	1-10102-3400	1
51	HOUSING, REVERSE	1-01101-3600	1
52	PIPE PLUG, SQ. HD.; 3/8-18 NPT	1-11251-0300	2
53	GASKET, HOUSING TO OIL DAM	1-01102-3600	1

8.17 PINION SHAFT AND RELATED PARTS HY-6900

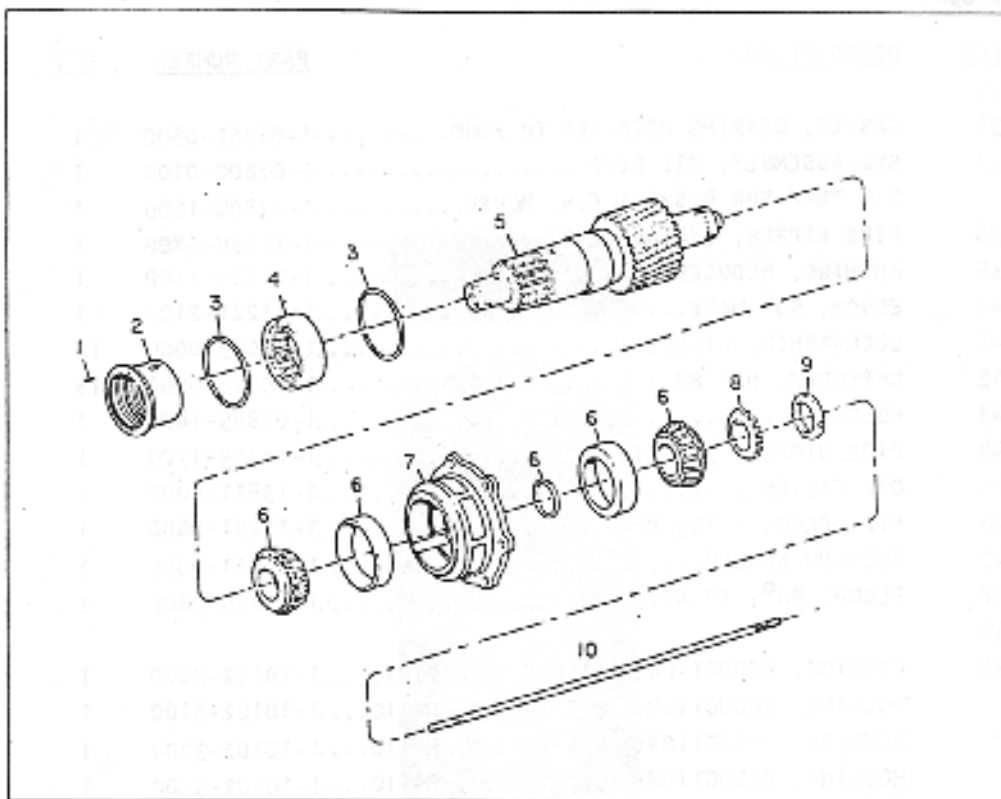


FIG. 52

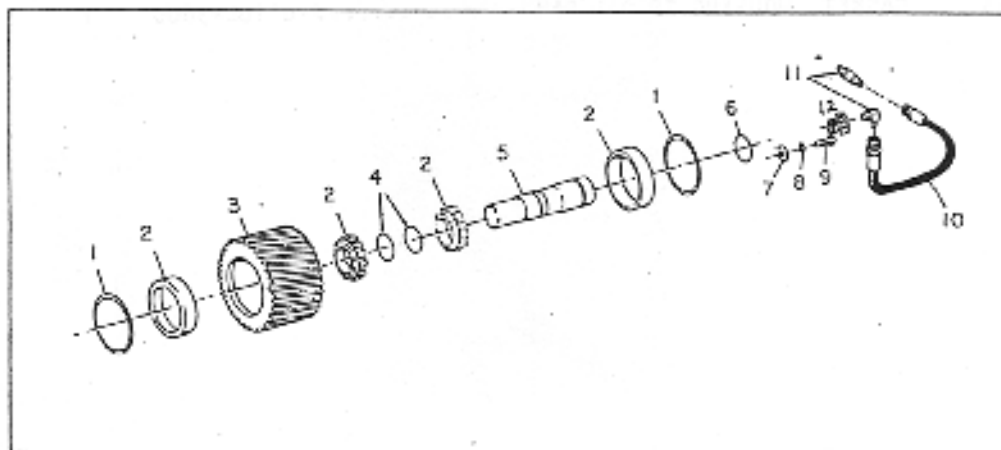


FIG. 53 IDLER GEAR AND RELATED PARTS HY-6900

62

**PINION SHAFT AND RELATED PARTS  
HY-6900**

<b>ITEM</b>	<b>DESCRIPTION</b>	<b>PART NUMBER</b>	<b>QTY</b>
1	SPRING PIN	1-12096-1000	3
2	BUSHING ASSEMBLY, REAR COMMUTATOR	1-00248-4200	1
3	SNAP RING	1-07732-0800	2
4	BEARING ROLLER	1-07727-0800	1
5	PINION AND SHAFT ASSEMBLY	(SEE CHART P.54-2)	1
6	BEARING ASSEMBLY ( 5 PIECES)	1-12958-0000	1
7	RETAINER, BEARING (INCLUDES RING)	1-12959-2600	1
8	LOCKWASHER, BEARING	1-13235-0000	1
9	LOCKNUT, BEARING	1-06903-0800	1
10	SHAFT, PUMP DRIVE	1-07892-0800	1

**IDLER GEAR AND RELATED PARTS**

<b>ITEM</b>	<b>DESCRIPTION</b>	<b>PART NUMBER</b>	<b>QTY</b>
1	SNAP RING	1-13991-0000	2
2	BEARING, IDLER 9 4 ( PIECES)	1-10117-0000	2
3	IDLER; 30 TEETH	1-10107-1000	1
4	SNAP RING	1-12763-0000	2
5	SHAFT, IDLER	1-10105-0200	1
6	O-RING	1-10336-0000	1
7	WROUGHT WASHER	1-10338-0000	1
8	LOCKWASHER, LIGHT ; 5/16"	1-09458-0800	1
9	CAPSCREW, HEX HD ; 5/16-18 X 1/2"	1-12145-0000	1
10	HOSE ASSEMBLY	1-07875-1000	1
11	MALE ELBOW	1-11237-0300	2
12	PIPE ADAPTER	1-12320-0000	1

HY-6900

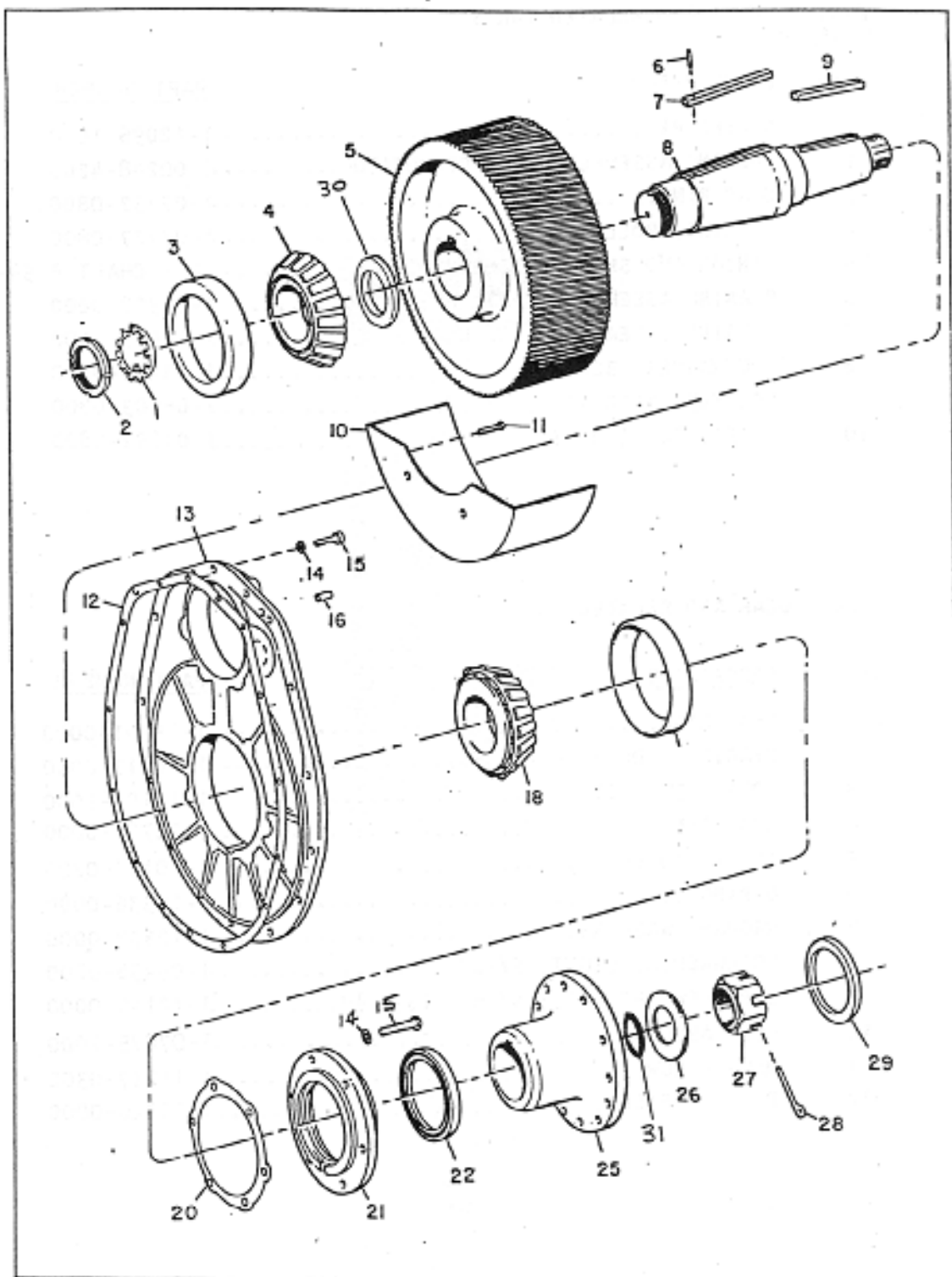


FIG. 54 OUTPUT GEAR AND RELATED PARTS HY-6900

**OUTPUT GEAR, COVER AND RELATED PARTS  
HY-6900**

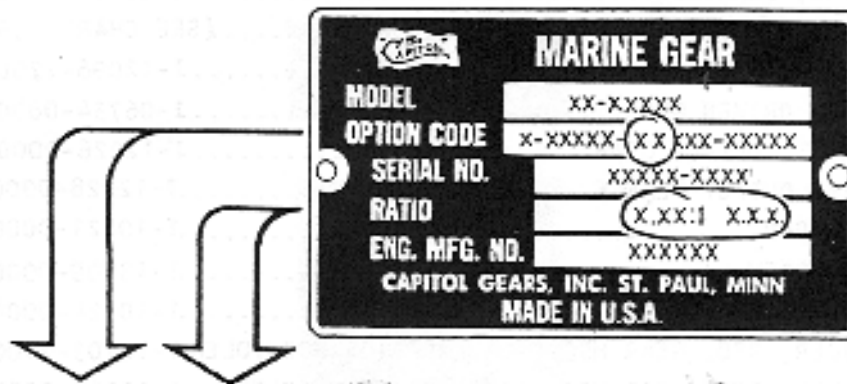
<b>ITEM</b>	<b>DESCRIPTION</b>	<b>PART NUMBER</b>	<b>QTY</b>
1	LOCKWASHER, BEARING	1-00335-1900	1
2	LOCKNUT, BEARING	1-00335-2100	1
3	CUP, BEARING	1-06725-0900	2
4	CONE, BEARING	1-06725-1000	1
5	GEAR, OUTPUT	(SEE CHART P.54-2)	1
6	SPRING PIN	1-12096-1200	1
7	KEY, DRIVEN GEAR	1-06734-0800	1
8	SHAFT, DRIVEN GEAR	1-12226-0000	1
9	KEY, OUTPUT FLANGE	1-22228-0000	1
10	OIL PAN	1-10121-0000	1
11	CAPSCREW	1-13805-0000	1
12	GASKET, REDUCTION GEAR COVER	1-10124-0000	1
13	COVER, RED. GEAR HSG. – ALL RATIOS NON-IDLER	1-10103-2100	1
	COVER, RED. GEAR HSG. 1.277: RATIO W/ IDLER	1-10163-0000	1
	COVER, RED. GEAR HSG. 1.484:1 RATIO W/ IDLER	1-10123-0000	1
	COVER, RED. GEAR HSG. 2.037:1 RATIO W/ IDLER	1-10103-0000	1
	COVER RED. GEAR HSG. 2.521:1 RATIO W/ IDLER	1-10133-0000	1
14	LOCKWASHER, LIGHT ½	1-11083-0000	22
15	CAPSCREW, HEX HD.	1-09141-0800	22
16	DOWEL, COVER TO HSG.	1-12311-0000	2
17			
18	CONE, BEARING	1-06726-1000	1
19			
20	SHIM PACK	1-03755-3400	1
21	BEARING CAP & OIL SEAL RETAINER	1-06718-1100	1
22	OIL SEAL	1-12970-0000	1
23			
24			
25	FLANGE, OUTPUT	1-12227-1000	1
26	WASHER	1-06745-0800	1
27	LOCKNUT	1-06744-0800	1
28	COTTER PIN	1-06746-0800	1
29	RING PILOT	1-01175-0400	1
30	BEARING SPACER	1-12244-0000	1
31	O-RING	1-06731-0800	1



### 8.19 REDUCTION GEAR SELECTION CHART HY-6900

HOW TO SELECT THE CORRECT PINION AND OUTPUT GEAR FOR YOUR TRANSMISSION:

- A. LOCATE THE NAMEPLATE (ON TOP OF HOUSING) AND DETERMINE THE TWO REDUCTION RATIO OPTION CODE NUMBERS (CIRCLED IN SAMPLE BELOW) AND THE RATIO. THE NUMBER OF TEETH MAY BE CHECKED ALSO.
- B. MATCH THIS INFORMATION WITH THE CHART BELOW TO DETERMINE THE CORRECT PART NUMBER(S).



OPTION CODE	RATIO	PART NAME	NO. OF TEETH	PART NUMBER
01	1,289:1 AER	PINION GEAR	38 49	1-11870-0000 1-13362-2000
02	1,485:1 AER	PINION GEAR	35 52	1-11872-0000 1-13363-2000
03	2,107:1 AER	PINION GEAR	28 59	1-11876-0000 1-13369-2000
04	2,480 AER	PINION GEAR	25 62	1-11879-0000 1-13377-2000
05	2,954:1 AER	PINION GEAR	22 65	1-11882-0000 1-13374-2000
06	1,277:1 ER	PINION GEAR	36 46	1-11871-0000 1-13358-2000
07	1,484:1 ER	PINION GEAR	33 49	1-11873-0000 1-13360-2000
08	2,037:1 ER	PINION GEAR	27 55	1-11877-0000 1-13365-2000
09	2,521 ER	PINION GEAR	23 58	1-11881-0000 1-13367-2000
10	1,150:1 AER	PINION GEAR	40 46	1-11886-0000 1-13609-2000



